

The following easements do not apply to the 15.308 acre tract:

1. Easement granted to The Ohio Fuel Gas Co., of record in Deed Book 2130, Pg. 76.
2. Easement granted to The Ohio Fuel Gas Co., of record in Deed Book 2943, Pg. 288.
3. Easement granted to the City of Columbus, Ohio, of record in Deed Book 3475, Pg. 19.
4. Easement granted to the Ohio Fuel Gas Co., of record in Deed Book 2329, Pg. 605.
5. Easement granted to The Ohio Bell Telephone Co., of record in Official Record 13800A12.
6. Easement granted to Columbus Southern Power Co., of record in Official Record 18018C17.

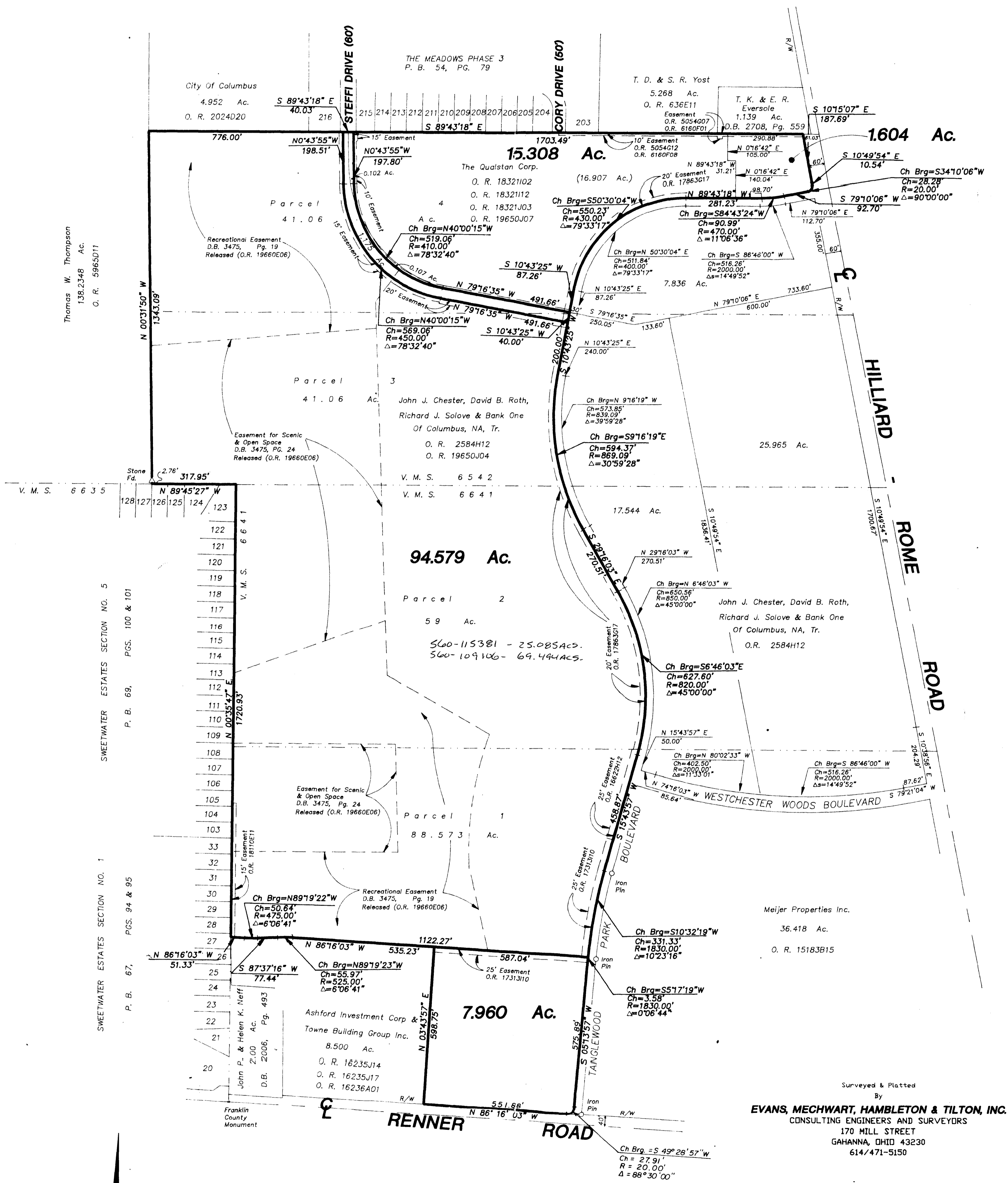
The following easements do not apply to the 94.579 acre tract or the 7.960 acre tract:

1. Easement granted to The Ohio Fuel Gas Co., of record in Deed Book 2130, Pg. 176.
2. Easement granted to The Ohio Fuel Gas Co., of record in Deed Book 2943, Pg. 288.
3. Easement granted to Litel Telecommunications Corp., of record in Official Record 6466H04.
4. Easement granted to Columbia Gas of Ohio, Inc., of record in Official Record 5054G07.
5. Easement granted to The City of Columbus, Ohio, of record in Deed Book 3475, Pg. 19 (Released).
6. Easement granted to the County of Franklin, of record in Deed Book 1089, Pg. 144.
7. Easement granted to The Columbus-West II Motel, of record in Official Record 6487A04.
8. Easement granted to Columbia Gas of Ohio, Inc., of record in Official Record 5054G12.
9. Easement granted to Columbia Gas of Ohio, Inc., of record in Official Record 6160F01.
10. Easement granted to Columbia Gas of Ohio, Inc., of record in Official Record 6160F08.
11. Easement granted to Litel Telecommunications Corp., of record in Official Record 6466G17.

SURVEY OF ACREAGE PARCELS

Located in Virginia Military Survey Nos. 6641 & 6542

City Of Columbus, Franklin County, Ohio



NOTE :

The bearings shown hereon are based on a meridian in a bearing system in which the centerline of Renner Road has a bearing of S 86° 16' 03" E.

The 94.579, AND 7.960 acre tracts shown hereon are contiguous along their common boundaries and there are no gaps, gores or overlaps between them.

By *Thomas D. Silbalds*
 Thomas D. Silbalds
 Registered Surveyor No. 5908

SCALE 1" = 200'
 AUGUST 8, 1991
 Revised November 8, 1991
 June 16, 1992
 July 23, 1992
 August 3, 1992
 GRAPHIC SCALE 1" = 200'

