

TRACT REGISTER				
TRACT NO.	LAND OWNER	ACREAGE		REMARKS
		FEE	LESSER INTEREST	
100	DORCUS RIEBEL WILLIAMS	3.33		
100E	DORCUS RIEBEL WILLIAMS		0.45	PERPETUAL ROAD & UTILITY EASEMENT

PROJECT MAP

DEPT. OF THE
USING SERVICE FEDERAL AVIATION ADMIN.

LOCATION OF PROJECT

STATE OHIO
COUNTY FRANKLIN
DIVISION OHIO RIVER
DISTRICT LOUISVILLE
ARMY AREA 4TH
5.2 MILES N OF GALLOWAY
8.0 MILES W OF COLUMBUS

TRANSPORTATION FACILITIES

RAILROADS
STATE ROADS
FEDERAL ROADS
AIR LINES

ACQUISITION

TOTAL ACRES ACQUIRED
FEE
PUBLIC DOMAIN WITHDRAWAL
USE PERMIT
TRANSFER
LEASE
LESSER INTERESTS

DISPOSAL

TOTAL ACRES DISPOSED OF
SOLD
PUBLIC DOMAIN WITHDRAWAL
USE PERMIT
TRANSFERRED
LEASES TERMINATED
LESSER INTERESTS TERM.
REASSIGNED
OTHER

LEGEND

EXCEPT FOR THE SPECIAL SYMBOLS SHOWN BELOW MAP SYMBOLS ARE STANDARD IN ARMY MAP SERVICE TECHNICAL MANUAL NO. 28.

RESERVATION LINE	
RESERVATION LINE (Actual Survey)	
TRACT BOUNDARY LINE	
TRACT NUMBER	
CONTOUR LINE	
DISPOSAL	
EXTENDED OWNERSHIP LINE	

PROPERTY SURVEY

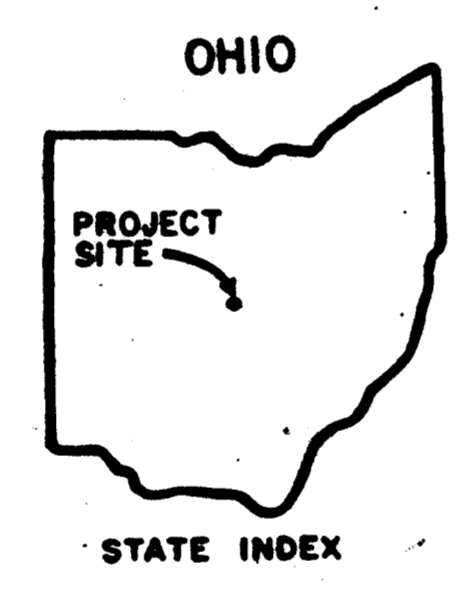
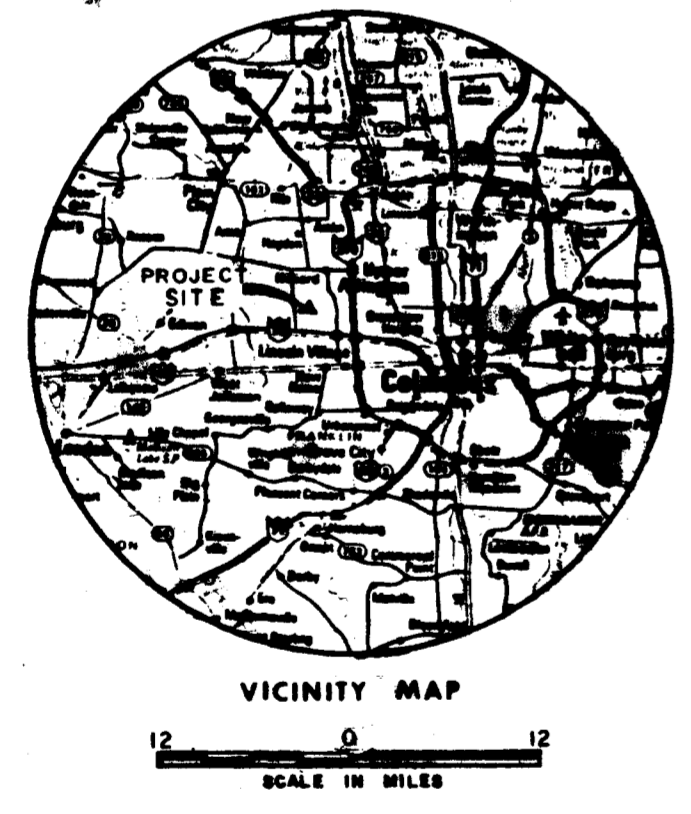
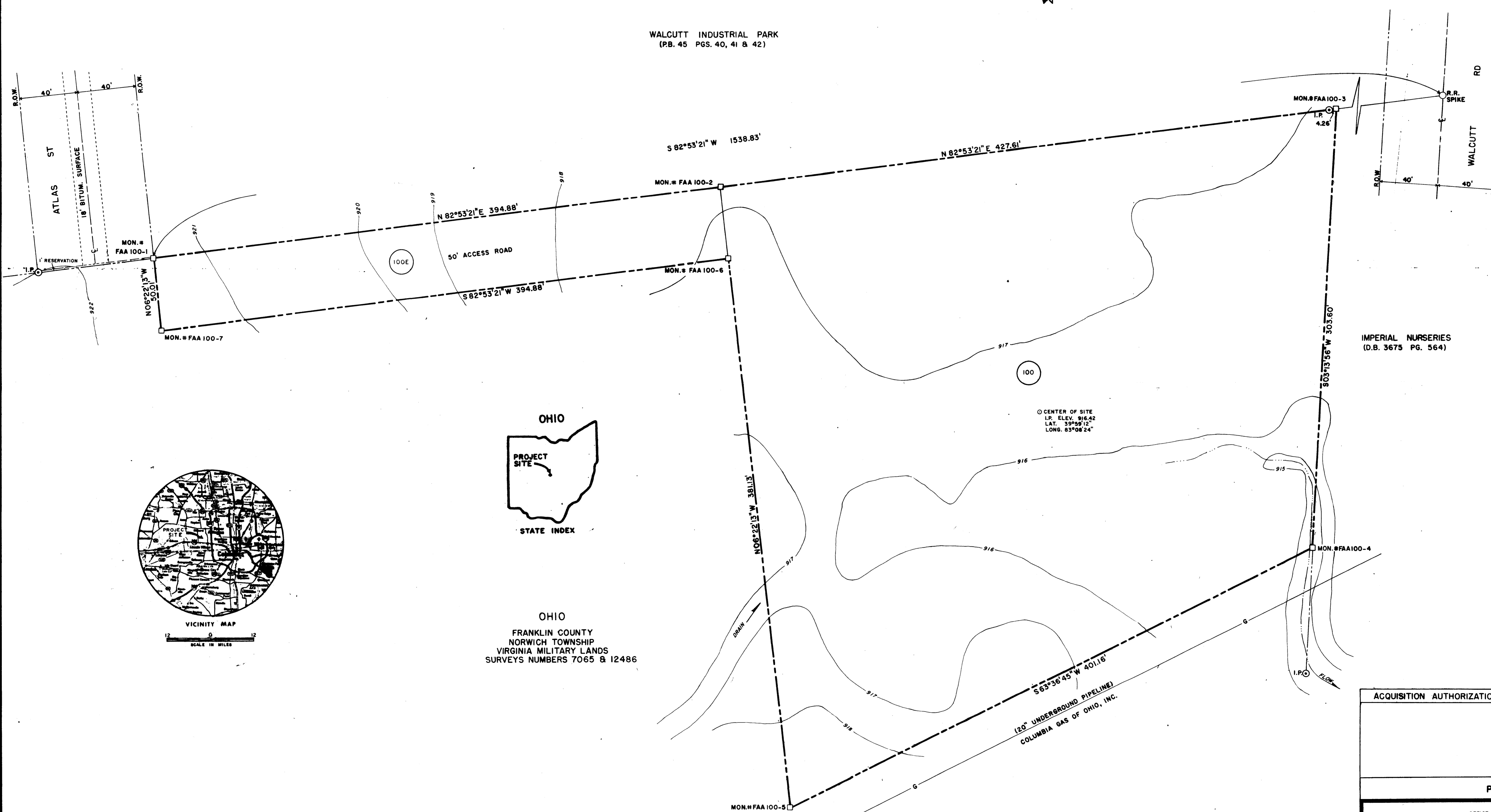
DEPARTMENT OF THE ARMY
OFFICE OF THE LOUISVILLE DISTRICT ENGINEER
CORPS OF ENGINEERS
OHIO RIVER DIVISION

REAL ESTATE
FEDERAL AVIATION ADMINISTRATION
GALLOWAY TOWER SITE
FRANKLIN CO., OHIO

DRAWN BY: L.M.McCAULEY
CHECKED BY: L.M.McCAULEY
SUBMITTED BY:
RECOMMENDED BY:
APPROVED BY: DATE

CHIEF, REAL ESTATE DIVISION
OFFICE, CHIEF OF ENGINEERS, WASHINGTON D. C. 20314

INSTALLATION OR PROJECT NO. SHEET 1 OF 1 DRAWING NO.



OHIO
FRANKLIN COUNTY
NORWICH TOWNSHIP
VIRGINIA MILITARY LANDS
SURVEYS NUMBERS 7065 & 12486

LEGEND
□ C. OF E. ALUMINUM BDRY. DISC
○ IRON PIPE
○ RAILROAD SPIKE

NOTE:
THE BOUNDARY OF THIS SITE WAS COMPILED FROM DEED DESCRIPTIONS, PLAT MAPS AND ACTUAL SURVEY DATA.

Bearings herein are based on a bearing of North 80° 53' 21" East for the Northernly line of said 69307 acre tract

MICROFILMED	DATE AUDIT APPROVED	DATE	REVISIONS	BY