

SURVEY OF ACREAGE PARCEL

VIRGINIA MILITARY SURVEY NO. 7065

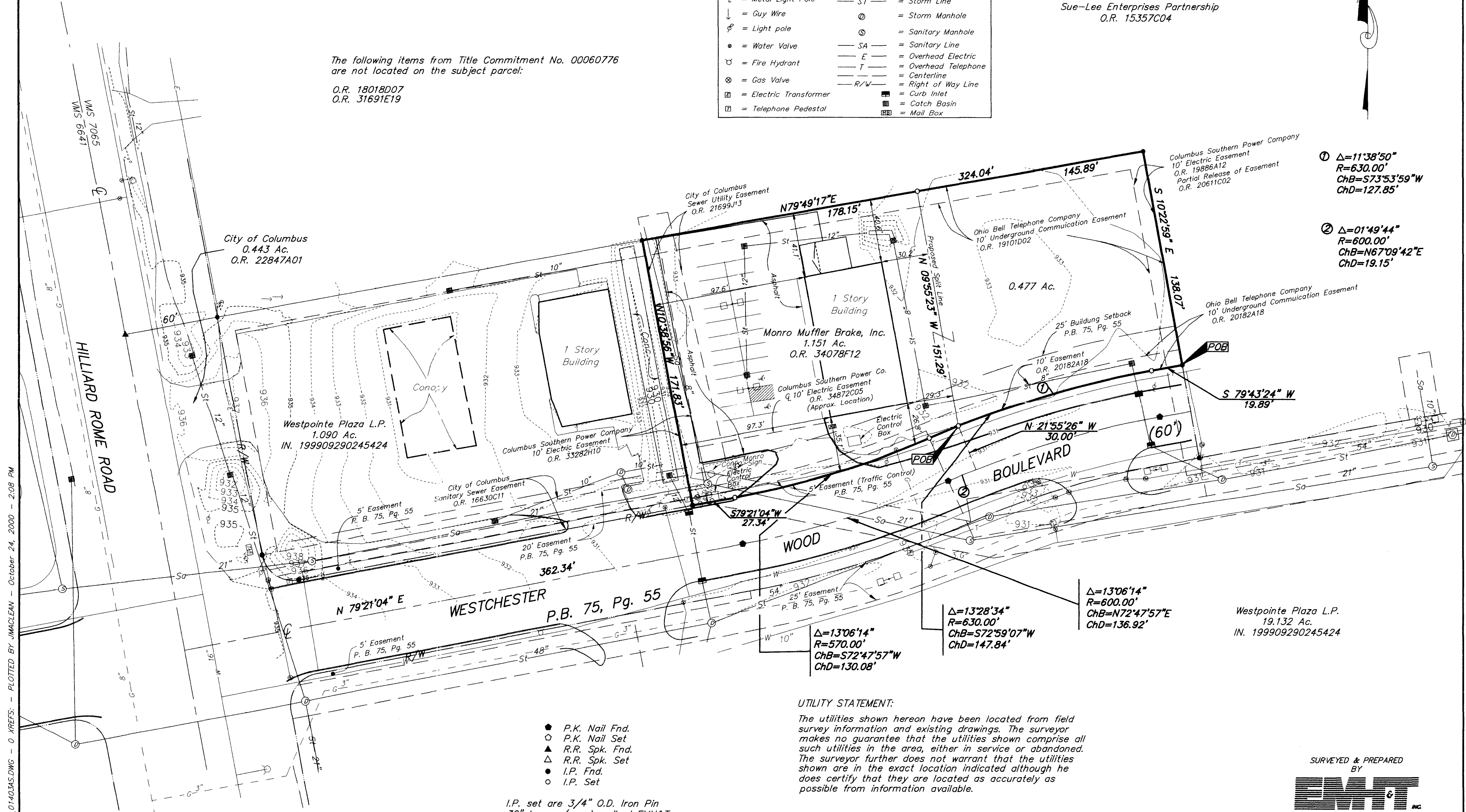
CITY OF COLUMBUS, FRANKLIN COUNTY, OHIO

LEGEND			
□	= Light pole	— W —	= Water Line
⊗	= Telephone Pole	— G —	= Gas Line
⊕	= Metal Light Pole	— ST —	= Storm Line
↓	= Guy Wire	⊙	= Storm Manhole
⊕	= Light pole	⊙	= Sanitary Manhole
●	= Water Valve	— SA —	= Sanitary Line
⊕	= Fire Hydrant	— E —	= Overhead Electric
⊕	= Gas Valve	— T —	= Overhead Telephone
⊕	= Electric Transformer	—	= Centerline
⊕	= Telephone Pedestal	— R/W —	= Right of Way Line
		■	= Curb Inlet
		■	= Catch Basin
		■	= Mail Box

Sue-Lee Enterprises Partnership
O.R. 15357C04

The following items from Title Commitment No. 00060776 are not located on the subject parcel:

O.R. 18018D07
O.R. 31691E19



① $\Delta=11'38'50''$
 $R=630.00'$
 $ChB=S73'53'59''W$
 $ChD=127.85'$

② $\Delta=01'49'44''$
 $R=600.00'$
 $ChB=N67'09'42''E$
 $ChD=19.15'$

$\Delta=13'06'14''$
 $R=600.00'$
 $ChB=N72'47'57''E$
 $ChD=136.92'$

$\Delta=13'28'34''$
 $R=630.00'$
 $ChB=S72'59'07''W$
 $ChD=147.84'$

$\Delta=13'06'14''$
 $R=570.00'$
 $ChB=S72'47'57''W$
 $ChD=130.08'$

- P.K. Nail Fnd.
- P.K. Nail Set
- ▲ R.R. Spk. Fnd.
- △ R.R. Spk. Set
- I.P. Fnd.
- I.P. Set

I.P. set are 3/4" O.D. Iron Pin
30" long w/cap inscribed EMH&T.



GRAPHIC SCALE
(IN FEET)

According to the Federal Emergency Management Agency's Flood Insurance Rate Map (dated August 2, 1995), the subject parcel shown hereon lies within Zone X (areas determined to be outside 500-year flood plain), Community Panel No. 39049C0210G.

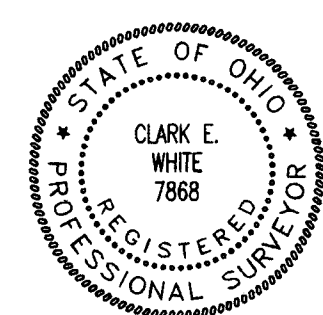
UTILITY STATEMENT:

The utilities shown hereon have been located from field survey information and existing drawings. The surveyor makes no guarantee that the utilities shown comprise all such utilities in the area, either in service or abandoned. The surveyor further does not warrant that the utilities shown are in the exact location indicated although he does certify that they are located as accurately as possible from information available.

CERTIFICATION: (Commitment No. 00060776)

To: CH, Inc. & Chicago Title Insurance Company

This is to certify, to the best of my knowledge, information and belief, that this map and the survey on which it is based were made in accordance with "Minimum Standard Detail Requirements for ALTA /ACSM and NSPS in 1999", and includes items 1, 3, 4 & 13 of Table A "Optional Survey Responsibilities & Specification" thereof, and pursuant to the Accuracy Standards as adopted by ALTA, ACSM & NSPS in effect on the date of this certification.



SURVEYED & PREPARED BY
EMT INC.
CONSULTING ENGINEERS & SURVEYORS
170 MILL STREET
GAHANNA, OHIO 43230
(614) 471-5150

By *Clark E. White*
Professional Surveyor No. 7868

Q:\PROJECT\20001403.01\DWG\01403AS.DWG - 0 XREFS - PLOTTED BY JIMACLEAN - October 24, 2000 - 2:08 PM