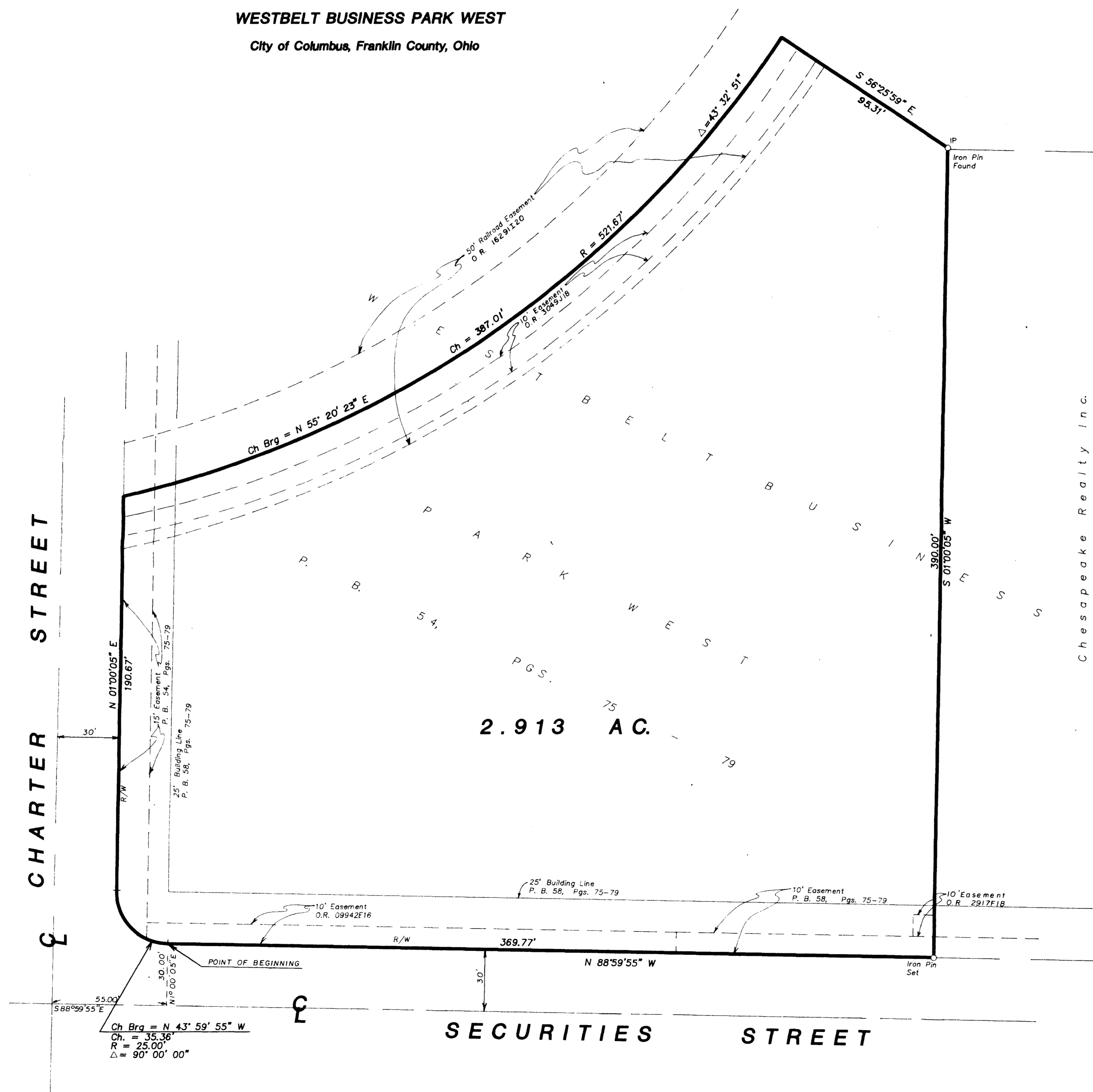


**SURVEY OF ACREAGE PARCEL
BEING PART OF LOT 7
WESTBELT BUSINESS PARK WEST
City of Columbus, Franklin County, Ohio**



NOTE :
The bearings shown hereon are based on the same meridian as the plat of record in Plat Book 58, Pages 75 - 79.

Spur Track Easement of record in O.R. 15873C10 does not apply to subject tract.

Surveyed & Platted
By
EVANS, MECHWART, HAMBLETON & TILTON
CONSULTING ENGINEERS AND SURVEYORS
170 MILL STREET
GAHANNA, OHIO 43230
614/471-5150

By *Thomas D. Silbalds*
Thomas D. Silbalds
Registered Surveyor No. 5908
SCALE 1"=30' AUGUST 5, 1991
GRAPHIC SCALE 1" = 30'

