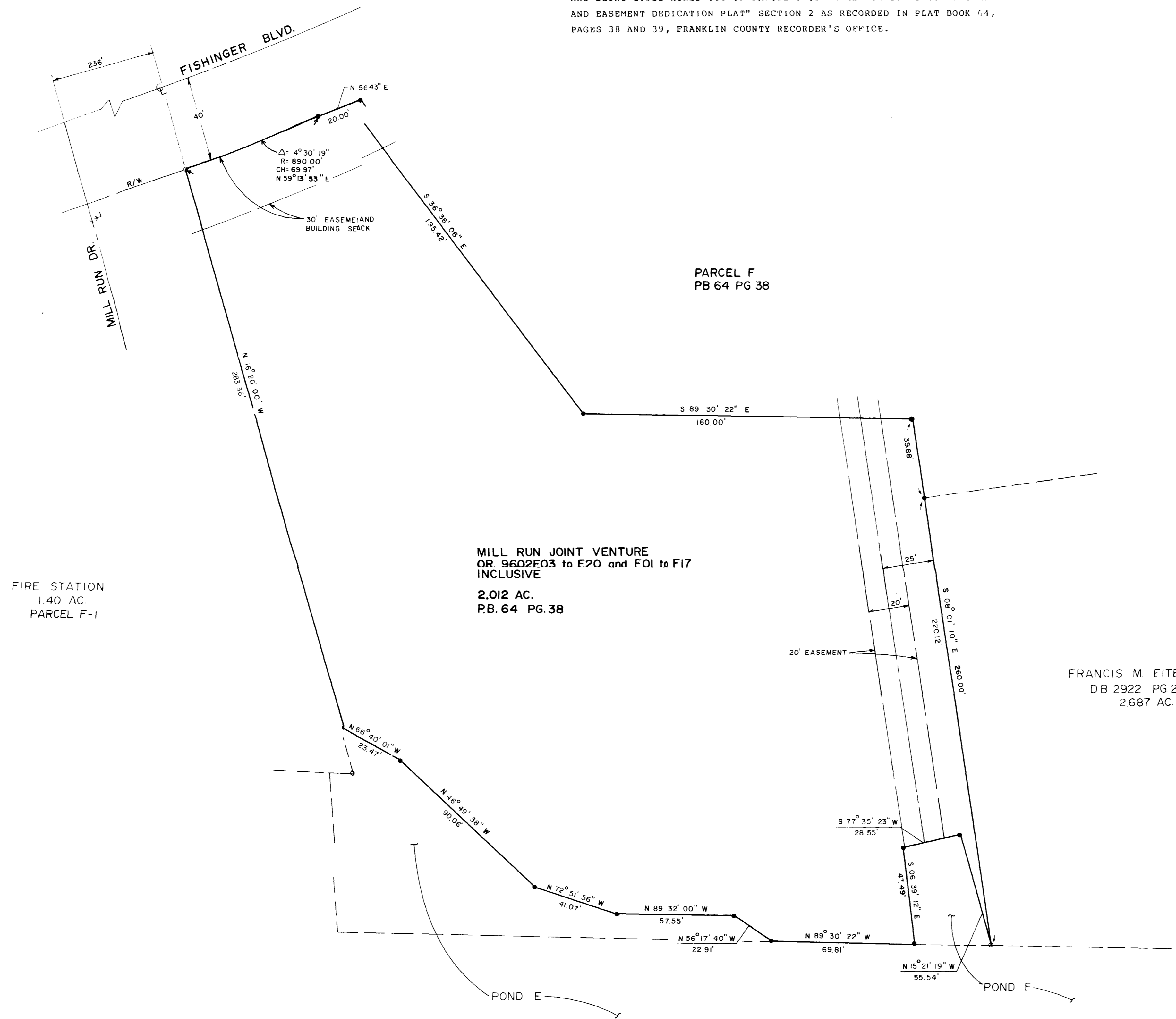
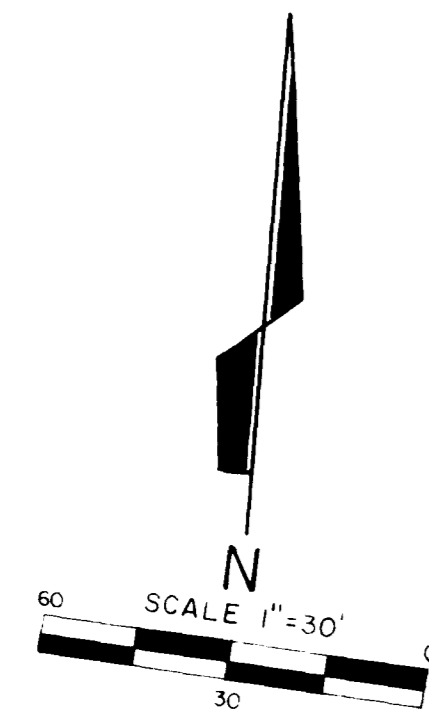


SITUATED IN THE STATE OF OHIO, COUNTY OF FRANKLIN, CITY OF COLUMBUS,
 AND BEING 2.012 ACRES OUT OF PARCEL F OF "MILL RUN SUBDIVISION STREET
 AND EASEMENT DEDICATION PLAT" SECTION 2 AS RECORDED IN PLAT BOOK 64,
 PAGES 38 AND 39, FRANKLIN COUNTY RECORDER'S OFFICE.



SITE MAP
 SCALE: 1"=1 MILE



BOUNDARY SURVEY FOR TARGET CONSTRUCTION CO.		SHEET: 1
	PREPARED BY: P & L SYSTEM, LTD 4715 CLEVELAND AVE COLUMBUS, OHIO 43231 (614) 478-4001	