

LOCATION MAP
No Scale

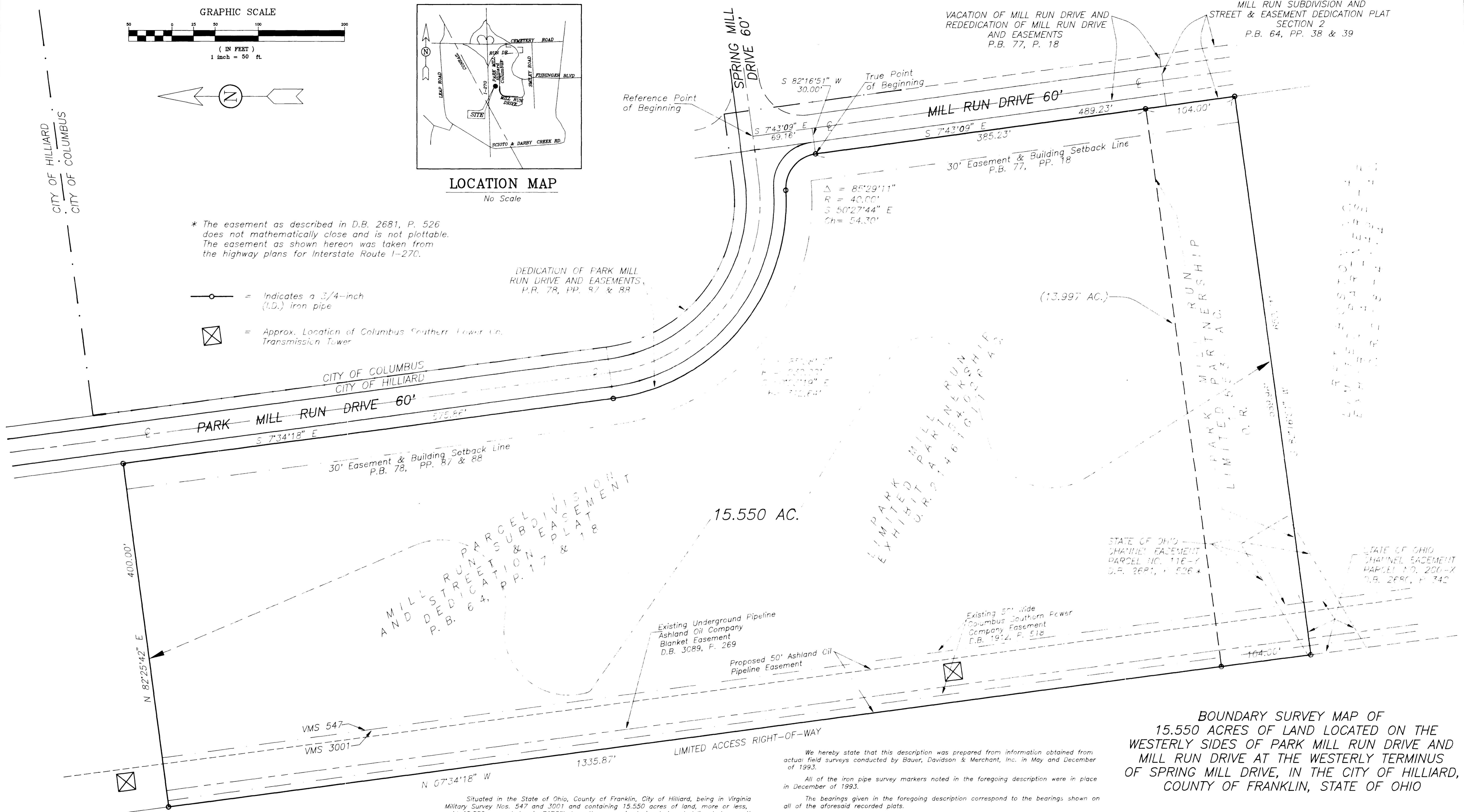
* The easement as described in D.B. 2681, P. 526 does not mathematically close and is not plottable. The easement as shown hereon was taken from the highway plans for Interstate Route I-270.

○ = Indicates a 3/4-inch (I.D.) iron pipe

⊠ = Approx. Location of Columbus Southern Power Co. Transmission Tower

DEDICATION OF PARK MILL RUN DRIVE AND EASEMENTS, P.R. 78, PP. 87 & 88

VACATION OF MILL RUN DRIVE AND REDEDICATION OF MILL RUN DRIVE AND EASEMENTS P.B. 77, P. 18
MILL RUN SUBDIVISION AND STREET & EASEMENT DEDICATION PLAT SECTION 2 P.B. 64, PP. 38 & 39



INTERSTATE ROUTE I-270

Situated in the State of Ohio, County of Franklin, City of Hilliard, being in Virginia Military Survey Nos. 547 and 3001 and containing 15.550 acres of land, more or less, said 15.550 acres being in PARCEL 1 as the same is designated and delineated upon the recorded plat of Mill Run Subdivision and Street & Easement Dedication Plat, of record in Plat Book 64, Pages 17 and 18, 13.997 acres of said 15.550 acres being out of that 54.026 acre tract of land described in Exhibit A in the deed to Park Mill Run Limited Partnership, of record in Official Record 21461G11 and 1.553 acres of said 15.550 acres being all of that tract of land described in the deed to Park Mill Run Limited Partnership, of record in Official Record 21461G11, both being of record in the Recorder's Office, Franklin County, Ohio.

We hereby state that this description was prepared from information obtained from actual field surveys conducted by Bauer, Davidson & Merchant, Inc. in May and December of 1993.

All of the iron pipe survey markers noted in the foregoing description were in place in December of 1993.

The bearings given in the foregoing description correspond to the bearings shown on all of the aforesaid recorded plats.

BAUER, DAVIDSON & MERCHANT, INC.
Consulting Engineers

By *Jimmie L. Davis*
Jimmie L. Davis
Professional Surveyor No. 6942

BOUNDARY SURVEY MAP OF
15.550 ACRES OF LAND LOCATED ON THE
WESTERLY SIDES OF PARK MILL RUN DRIVE AND
MILL RUN DRIVE AT THE WESTERLY TERMINUS
OF SPRING MILL DRIVE, IN THE CITY OF HILLIARD,
COUNTY OF FRANKLIN, STATE OF OHIO



BAUER,
DAVIDSON &
MERCHANT, INC.
Consulting Engineers
December 20, 1993

255 Green Meadows Drive S.
P.O. Box 370
Powell, Ohio 43065
(614) 846-3393
Order No. 1255-93
Scale: 1" = 50'

Revised 12-30-93