

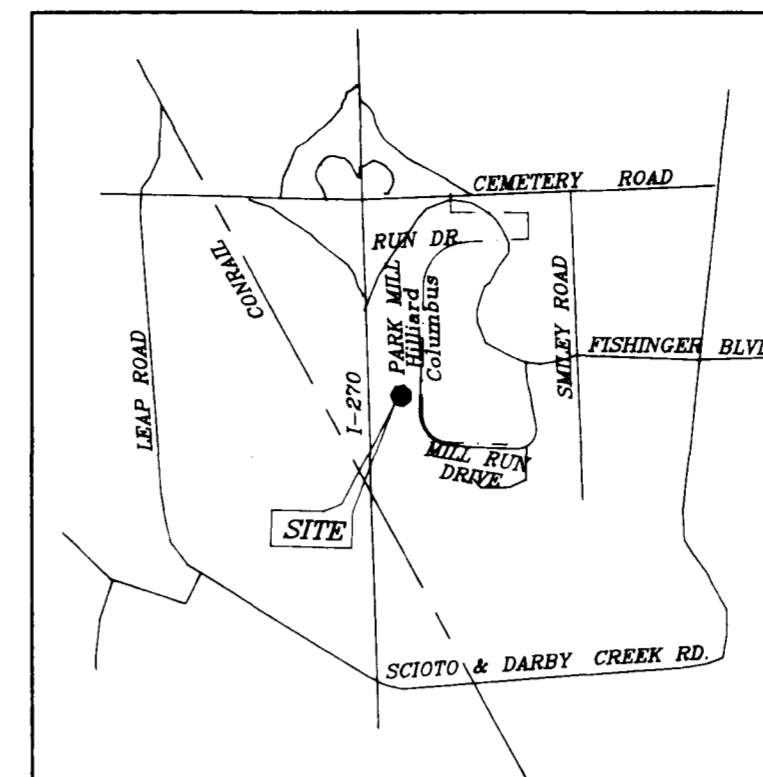
INTERSTATE ROUTE I-270

Limited Access Right-of-Way Line

Proposed 50' Wide Ashland Oil Pipeline Easement

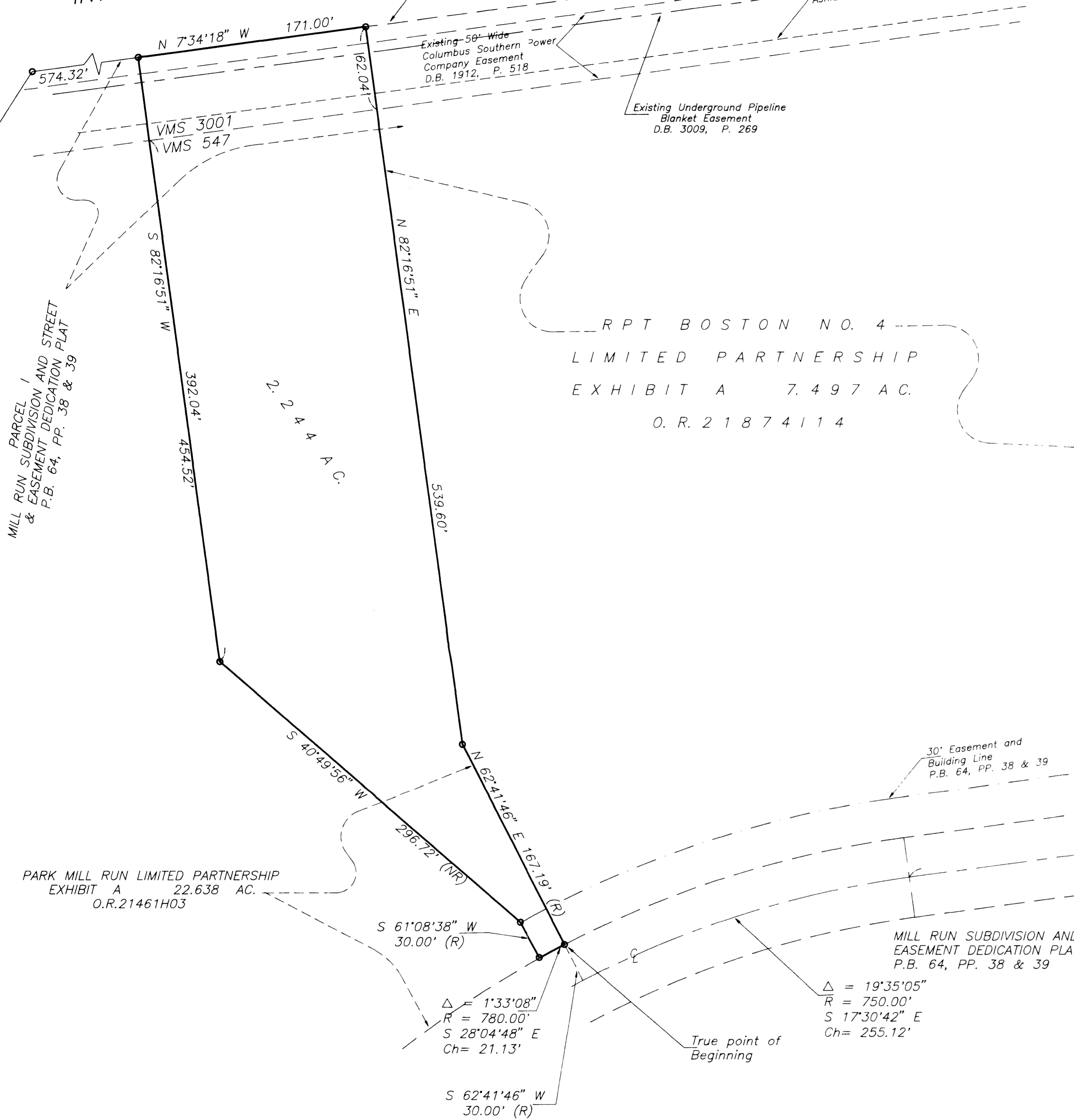
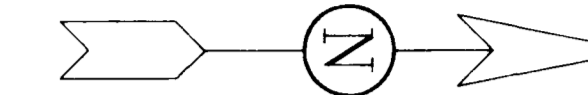
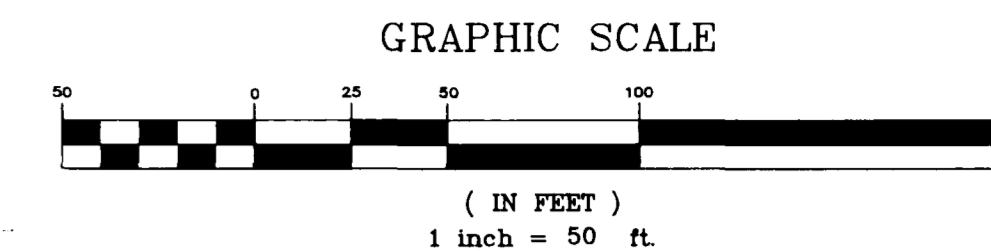
Existing 59' Wide Columbus Southern Power Company Easement D.B. 1912, P. 518

Existing Underground Pipeline Blanket Easement D.B. 3009, P. 269



LOCATION MAP

No Scale



RPT BOSTON NO. 4
LIMITED PARTNERSHIP
EXHIBIT A 7.497 AC.
O.R. 21874114

PARK MILL RUN LIMITED PARTNERSHIP
EXHIBIT A 22.638 AC.
O.R. 21461H03

DEDICATION OF PARK MILL RUN DRIVE
AND EASEMENTS
P.B. 78, PP. 87 & 88

VACATION OF MILL RUN DRIVE AND
REDEDICATION OF MILL RUN DRIVE
AND EASEMENTS P.B. 77, P. 18

MILL RUN SUBDIVISION AND STREET &
EASEMENT DEDICATION PLAT SECTION 2
P.B. 64, PP. 38 & 39

$\Delta = 1'33'08''$
 $R = 780.00'$
 $S 28'04'48'' E$
 $Ch = 21.13'$

$\Delta = 19'35'05''$
 $R = 750.00'$
 $S 17'30'42'' E$
 $Ch = 255.12'$

True point of Beginning

Situated in the State of Ohio, County of Franklin, City of Hilliard, being in Virginia Military Survey Nos. 547 and 3001 and containing 2.244 acres of land, more or less, said 2.244 acres being in PARCEL 1 as the same is designated and delineated upon the recorded plat of Mill Run Subdivision and Street & Easement Dedication Plat, of record in Plat Book 64, Pages 17 and 18, said 2.244 acres being out of that 22.638 acre tract of land described in Exhibit A in the deed to Park Mill Run Limited Partnership, of record in Official Record 21461H03, both being of record in the Recorder's Office, Franklin County, Ohio.

We do hereby state that the foregoing description was prepared from information obtained from actual field surveys conducted by Bauer, Davidson & Merchant, Inc. in May and December of 1993.

All of the iron pipe survey markers noted on this map were in place in December of 1993.

The bearings shown on this map correspond to the bearings shown on all the aforesaid recorded plats.

BOUNDARY SURVEY MAP OF
2.244 ACRES OF LAND LOCATED ON THE
WESTERLY SIDE OF MILL RUN DRIVE AND
SOUTH OF SPRING MILL DRIVE, IN THE
CITY OF HILLIARD, COUNTY OF FRANKLIN,
STATE OF OHIO

BAUER, DAVIDSON & MERCHANT, INC.
Consulting Engineers

By *Jimmie L. Davis*
Professional Surveyor No. 6942

BAUER,
DAVIDSON &
MERCHANT, INC.
Consulting Engineers

255 Green Meadows Drive S.
P.O. Box 370
Powell, Ohio 43065
(614) 846-3393
Order No. 1255-93
January 10, 1994