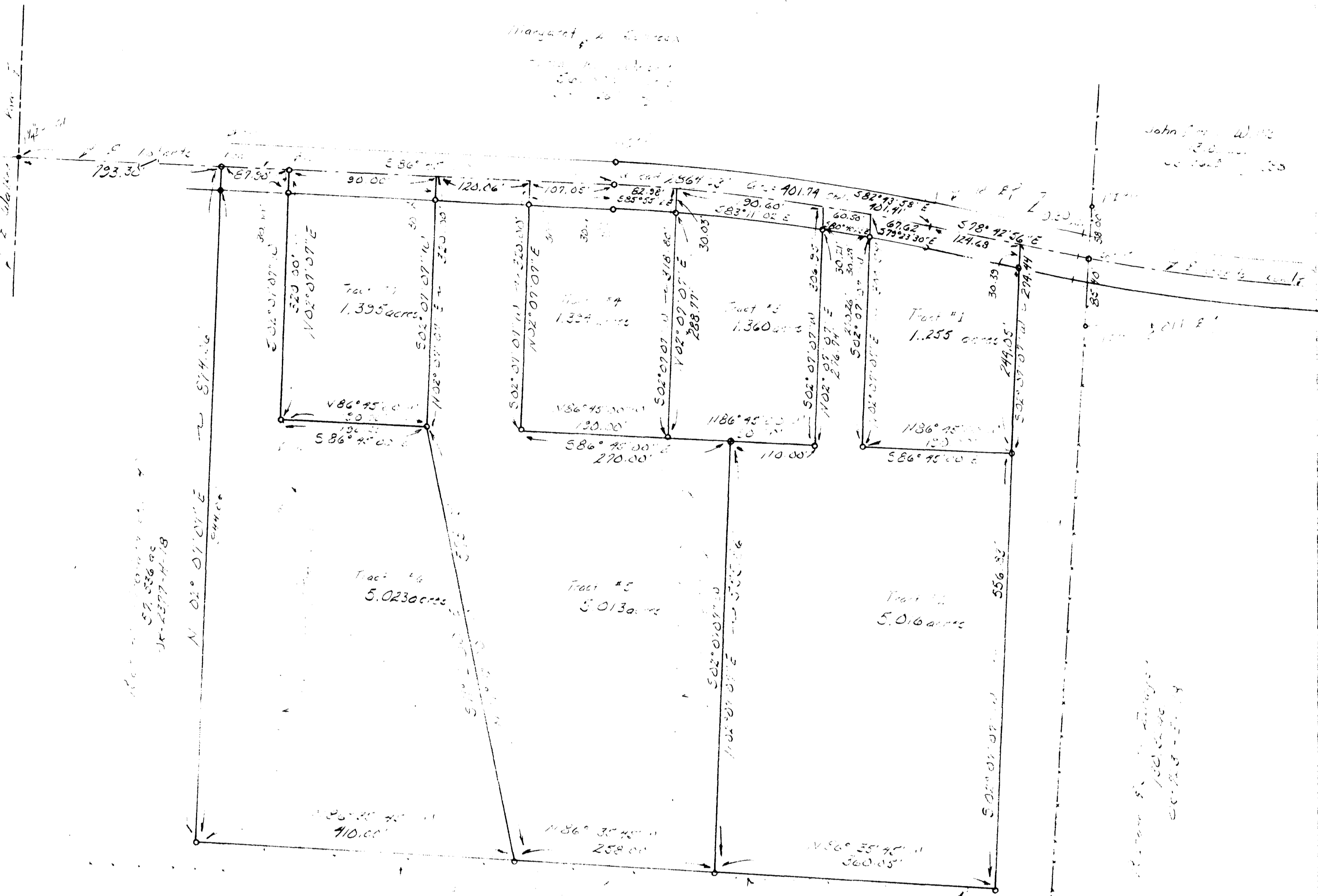


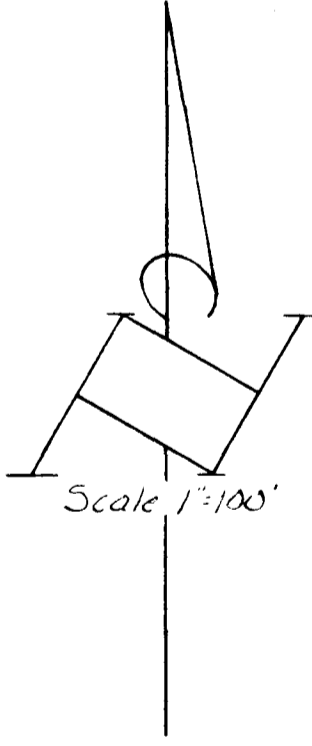
Margaret A. Wilson

John J. White



81-4-665-18
52-526-90
25-237-4-18

100-236
50-237-4-18



Survey of land
SE 237-4-18

Survey of Five Tracts

Tract #1 1.395 acres

Tract #2 1.334 acres

Tract #3 1.360 acres

Tract #4 5.023 acres

Tract #5 5.013 acres

Tract #6 5.016 acres

Notes:
All lot corners marked
by 1/2 inch spikes set, with
other marks and colors
shown.



Louis F. Haines



City of Portland
County of Multnomah

I HEREBY CERTIFY THE PLAT SHOWN HEREON
IS CORRECT AS SURVEYED AND
DATE July 15, 1987
SIGNED Louis F. Haines
Witnessed 7-24-87