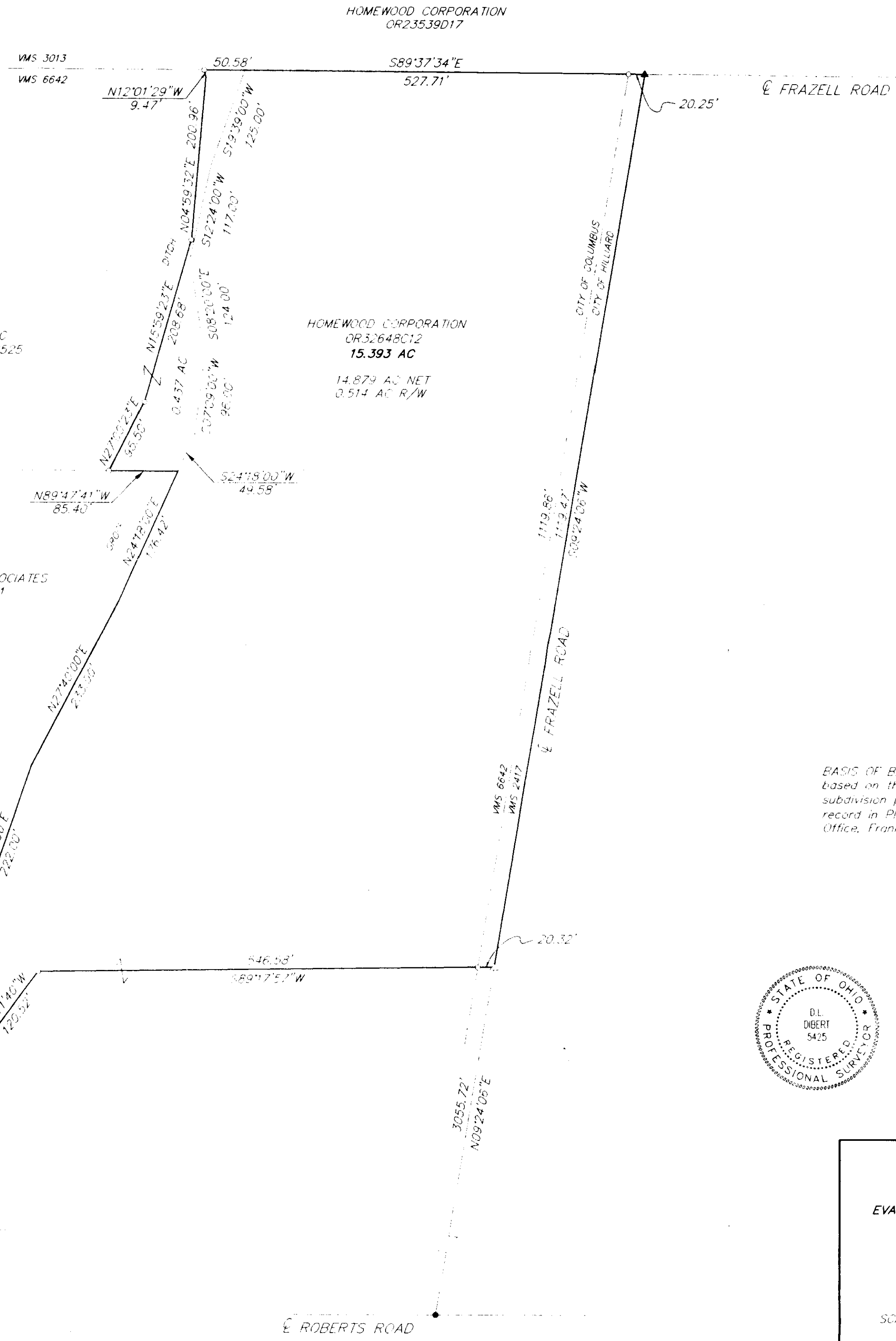
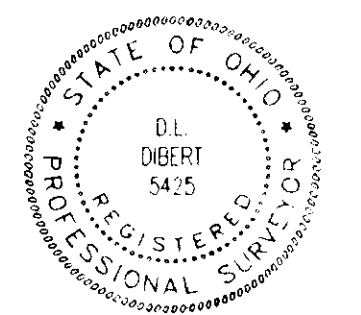
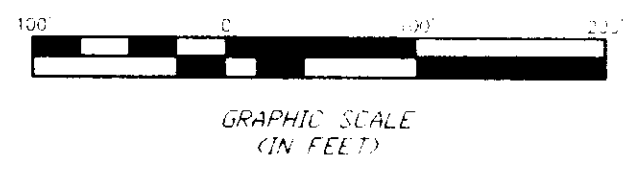


**SURVEY OF ACREAGE PARCEL
LOCATED IN
VIRGINIA MILITARY SURVEY NO. 6642
CITY OF COLUMBUS, FRANKLIN COUNTY, OHIO**



BASIS OF BEARINGS: The bearings shown hereon are based on the same Meridian as those shown on the subdivision plat of "Heritage Farms Section 2" of record in Plat Book 86 Pages 65-66, Recorder's Office, Franklin County, Ohio.

▲ = R.R. SPK. FND.
 △ = R.R. SPK. SET
 ● = I.P. FND.
 ○ = I.P. SET
 I.P. set are 3/4" O.D. Iron Pin
 30" long w/cap inscribed EM&T.



By Donald L. Digert
 Professional Surveyor No. 5425

Surveyed & Prepared
 By
EVANS, MECHWART, HAMBLETON & TILTON INC.
 CONSULTING ENGINEERS & SURVEYORS
 170 MILL STREET
 GAHANNA, OHIO 43230
 F14/471-5150

SCALE: 1" = 100'
 REVISED

AUGUST 13, 1998
 SEPTEMBER 30, 1998