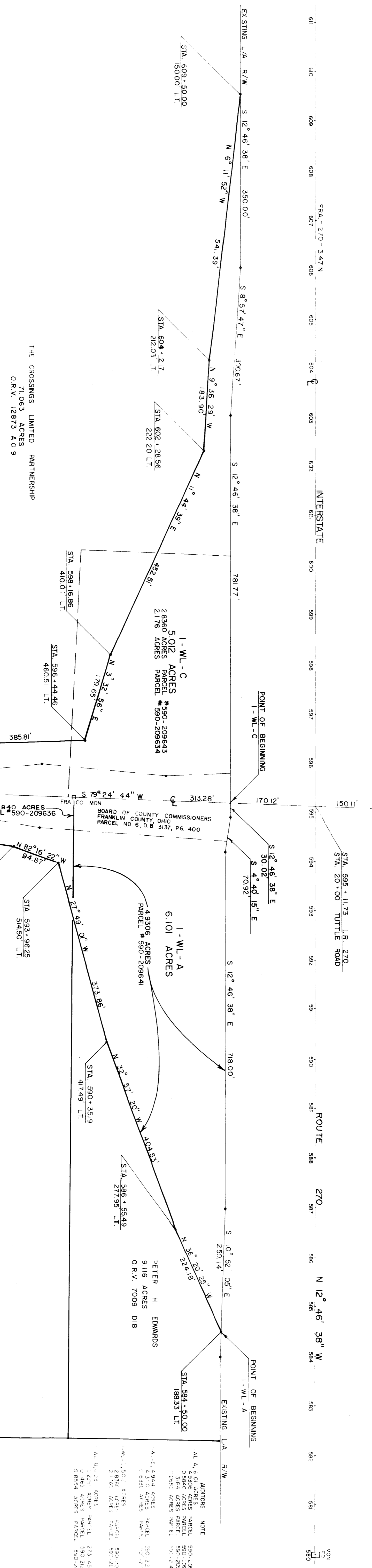
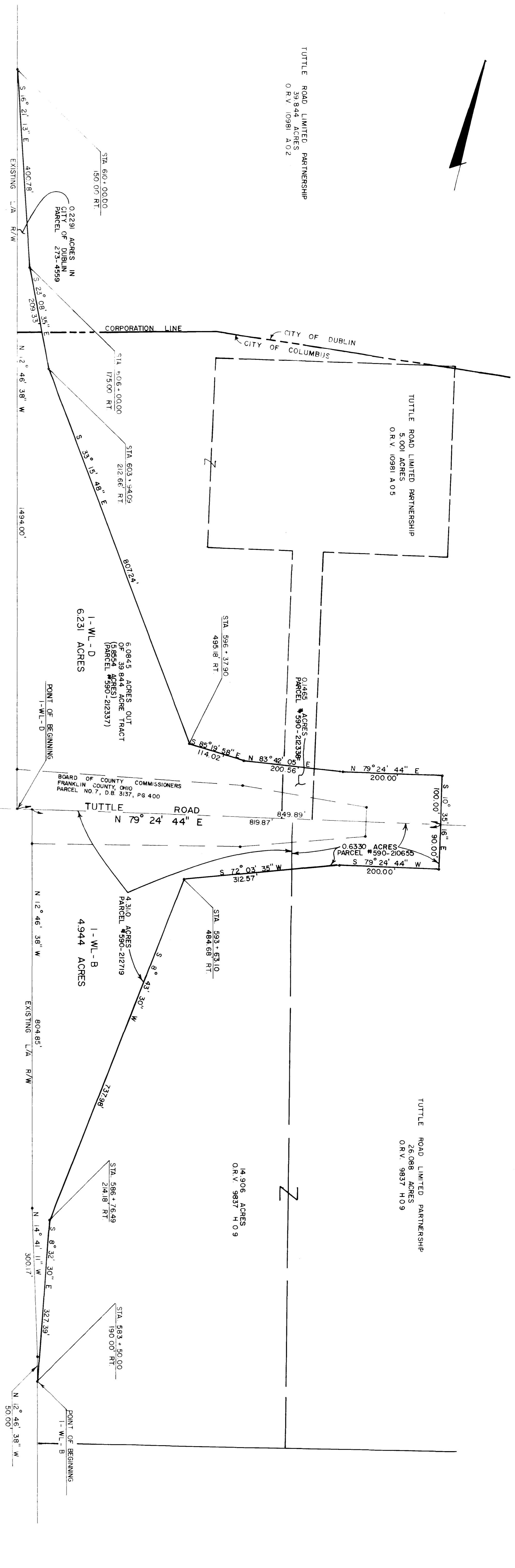


TUTTLE ROAD LIMITED PARTNERSHIP
 5.001 ACRES
 O.R.V. 0981 A.05

TUTTLE ROAD LIMITED PARTNERSHIP
 5.001 ACRES
 O.R.V. 0981 A.05

TUTTLE ROAD LIMITED PARTNERSHIP
 14.906 ACRES
 O.R.V. 9837 H.09

TUTTLE ROAD LIMITED PARTNERSHIP
 26.088 ACRES
 O.R.V. 9837 H.09



WE HEREBY CERTIFY THAT THE FOREGOING PLAT HAS BEEN PREPARED IN PART FROM AN ACTUAL FIELD SURVEY, AND IN PART FROM THE RECORDS OF THE PUBLIC RECORDS OFFICE OF FRANKLIN COUNTY ENGINEERS' OFFICE, THE OHIO DEPARTMENT OF TRANSPORTATION AND DESCRIPTIONS FOR THE PROPOSED LIMITED ACCESS RIGHT-OF-WAY AREAS PREPARED BY FRANKLIN CONSULTANTS, INC.

HOCKADEN AND ASSOCIATES, INC.
 CONSULTING ENGINEERS
 JOHN R. HOCKADEN
 REGISTERED SURVEYOR NO. 7199

FOR THE PURPOSE OF THIS PLAT A BEARING OF $N 10^{\circ} 03' 39''$ WEST WAS USED ON THE CENTERLINE OF INTERSTATE ROUTE 270 AND ALL OTHER BEARINGS THEN CALCULATED FROM THIS MERIDIAN.

THE CROSSINGS LIMITED PARTNERSHIP
 11.063 ACRES
 O.R.V. 12873 A.09

THE CROSSINGS LIMITED PARTNERSHIP
 27.615 ACRES
 O.R.V. 13091 F.13

ALLOTTEE	NOTE
1. AL. A. 6.101 ACRES PARCEL 590-09843	
2. AL. B. 6.101 ACRES PARCEL 590-09843	
3. AL. C. 6.101 ACRES PARCEL 590-09843	
4. AL. D. 6.101 ACRES PARCEL 590-09843	
5. AL. E. 6.101 ACRES PARCEL 590-09843	
6. AL. F. 6.101 ACRES PARCEL 590-09843	
7. AL. G. 6.101 ACRES PARCEL 590-09843	
8. AL. H. 6.101 ACRES PARCEL 590-09843	
9. AL. I. 6.101 ACRES PARCEL 590-09843	
10. AL. J. 6.101 ACRES PARCEL 590-09843	
11. AL. K. 6.101 ACRES PARCEL 590-09843	
12. AL. L. 6.101 ACRES PARCEL 590-09843	
13. AL. M. 6.101 ACRES PARCEL 590-09843	
14. AL. N. 6.101 ACRES PARCEL 590-09843	
15. AL. O. 6.101 ACRES PARCEL 590-09843	
16. AL. P. 6.101 ACRES PARCEL 590-09843	
17. AL. Q. 6.101 ACRES PARCEL 590-09843	
18. AL. R. 6.101 ACRES PARCEL 590-09843	
19. AL. S. 6.101 ACRES PARCEL 590-09843	
20. AL. T. 6.101 ACRES PARCEL 590-09843	
21. AL. U. 6.101 ACRES PARCEL 590-09843	
22. AL. V. 6.101 ACRES PARCEL 590-09843	
23. AL. W. 6.101 ACRES PARCEL 590-09843	
24. AL. X. 6.101 ACRES PARCEL 590-09843	
25. AL. Y. 6.101 ACRES PARCEL 590-09843	
26. AL. Z. 6.101 ACRES PARCEL 590-09843	

HOCKADEN AND ASSOCIATES, INC.
 CONSULTING ENGINEERS
 883 N. CASSADY AVENUE
 COLUMBUS, OHIO 43219
 PHONE: (614) 252-0993

DATE	3-27-89
BY	JLP
REVISION	REVISED PROPERTY OWNERSHIP AND AREAS OUT OF PROPERTIES
VERIFY ALL DIMENSIONS AND CONDITIONS AT SITE	

SHEET DESCRIPTION	LOCATION OF PROPOSED LIMITED ACCESS RIGHT-OF-WAY FOR PROPOSED TUTTLE ROAD AND I.R. 270 INTERCHANGE
PROJECT LOCATION	TUTTLE ROAD AND INTERSTATE ROUTE 270

DESIGN BY	J.P.
DRAWN BY	J.P.
CHECKED BY	J.P.
SCALE	1" = 100'
DATE:	
SHEET NO.	1 OF 1
ORDER NO.	P-736