

CITY OF DUBLIN, OHIO
 7.550 ACRE
 O.R. 16487B12

WASHINGTON TOWNSHIP TRUSTEES
 5.032 ACRES
 D.B. 3714, PG. 662

GRACE HARVEST CHRISTIAN CHURCH
 5.352 ACRES
 O.R. 08491B01

ILJA & DANISE KARANFILOV
 23.150 ACRES
 O.R. 02780C01

WILCOX - TUTTLE LIMITED PARTNERSHIP
 51.382 ACRES
 O.R. 14758H17

N 84°38'36"E 1182.23'

* 16.672 ACRES

S 83°15'00" W 839.22'

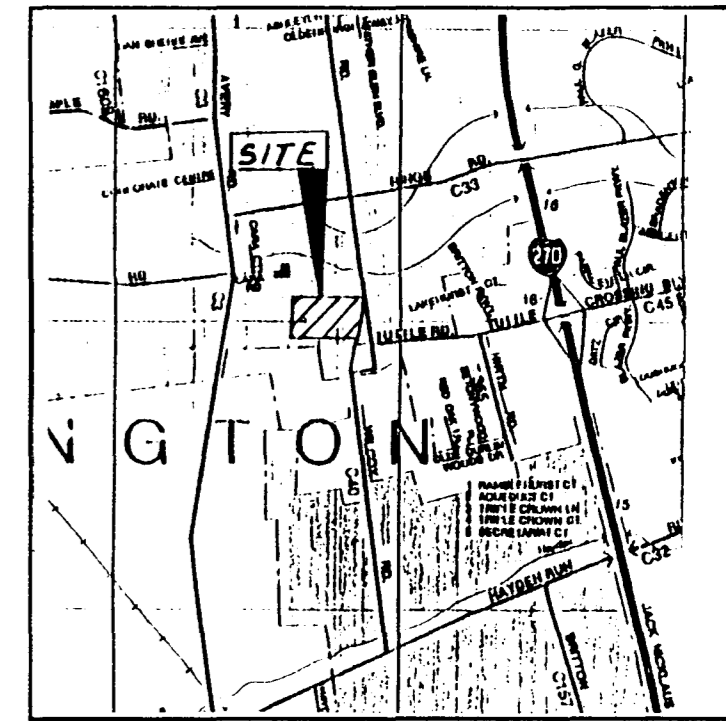
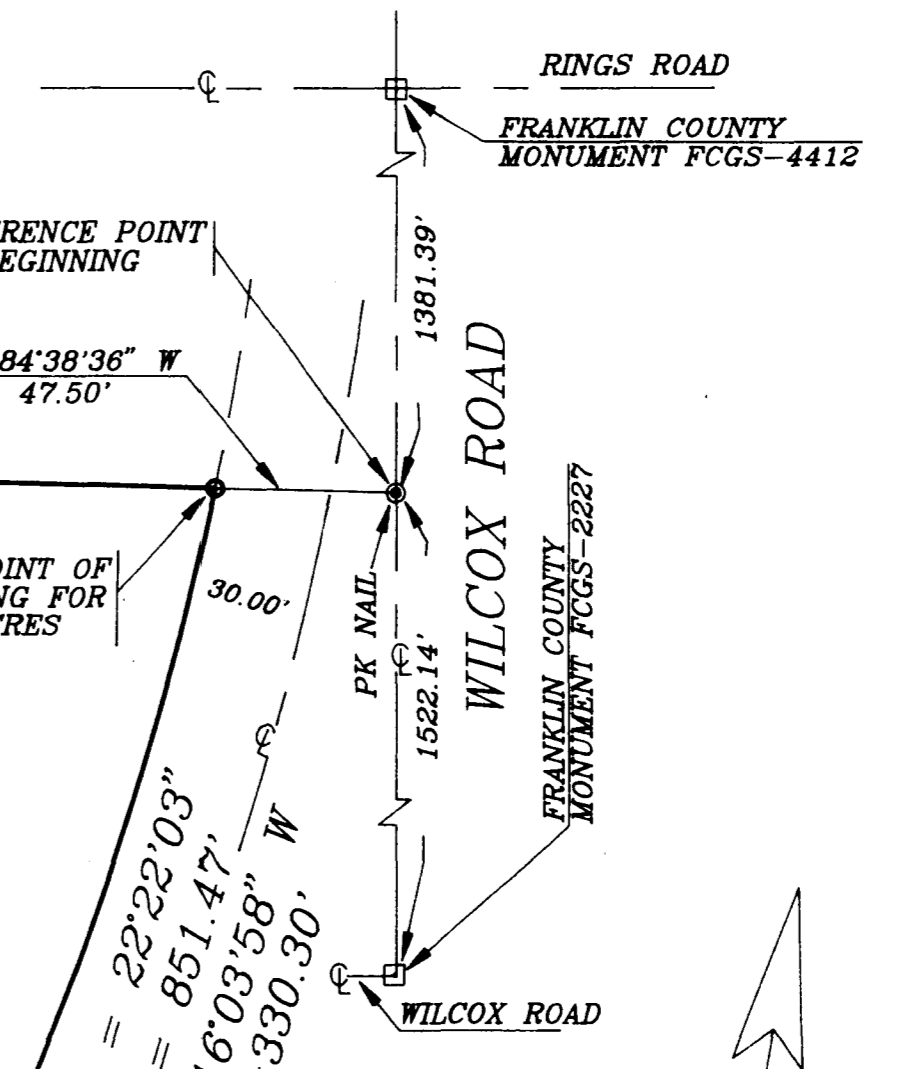
30.00'
 R = 14'06".55"
 S 20°11'32" W
 CH = 223.98'

S 27°15'00" W 227.10'
 WILCOX ROAD (RELOCATED) 60'
 DEDICATION OF WILCOX ROAD AND TUTTLE ROAD
 P.B. 75, PP. 45 & 46

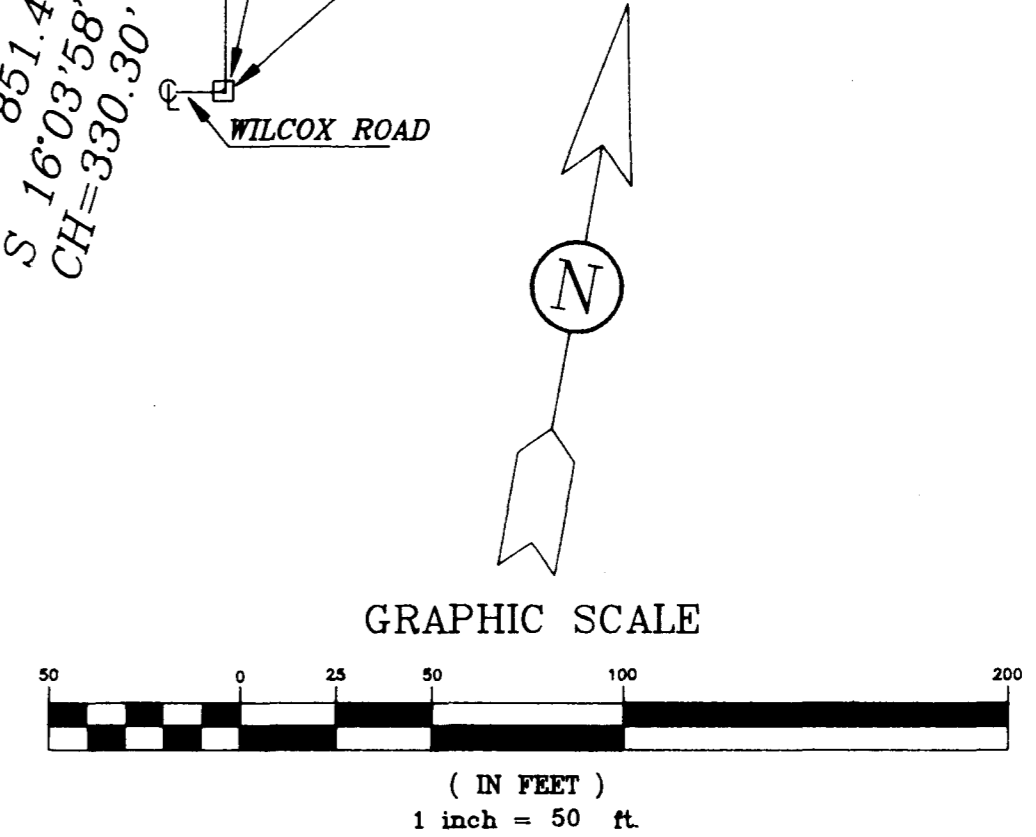
REFERENCE POINT OF BEGINNING
 S 84°38'36" W 47.50'

TRUE POINT OF BEGINNING FOR 8.213 ACRES
 30.00'

R = 22°22'03"
 S 16°03'58" W
 CH = 330.30'



LOCATION MAP
 NO SCALE



* Situated in the State of Ohio, County of Franklin, City of Dublin, being in Virginia Military Survey No. 3004 and containing 16.672 acres of land, more or less, said 16.672 acres being out of that 51.387 acre tract of land described in the deed to Wilcox-Tuttle Limited Partnership, of record in Official Record 14758H17, Recorder's Office, Franklin County, Ohio.

We hereby state that this map was prepared from information obtained from actual field surveys conducted by Bauer, Davidson & Merchant, Inc. in December of 1990 and July of 1992.

All of the survey markers noted on this map were in place in July of 1992.

The bearings shown on this map correspond to the bearing of S-6°45'00"E for both the centerline of Wilcox Road and the easterly line of said 51.387 acre tract as designated in said deed to Wilcox-Tuttle Limited Partnership, of record in Official Record 14758H17, Recorder's Office, Franklin County, Ohio.

BAUER, DAVIDSON & MERCHANT, INC.
 Consulting Engineers

By *James L. Davis*
 James L. Davis
 Professional Surveyor No. 6942



Unless otherwise noted on this map —○— indicates a 3/4-inch (I.D.) iron pipe

BOUNDARY SURVEY MAP OF 16.672 ACRES OF LAND LOCATED ON THE WESTERLY SIDE OF WILCOX ROAD AND NORTH OF TUTTLE ROAD, IN THE CITY OF DUBLIN, COUNTY OF FRANKLIN, STATE OF OHIO

BAUER, DAVIDSON & MERCHANT, INC.
 CONSULTING ENGINEERS

255 GREEN MEADOWS DRIVE SOUTH
 P.O. BOX 370
 POWELL, OHIO 43065

July 7, 1993

SURVEY/05182792