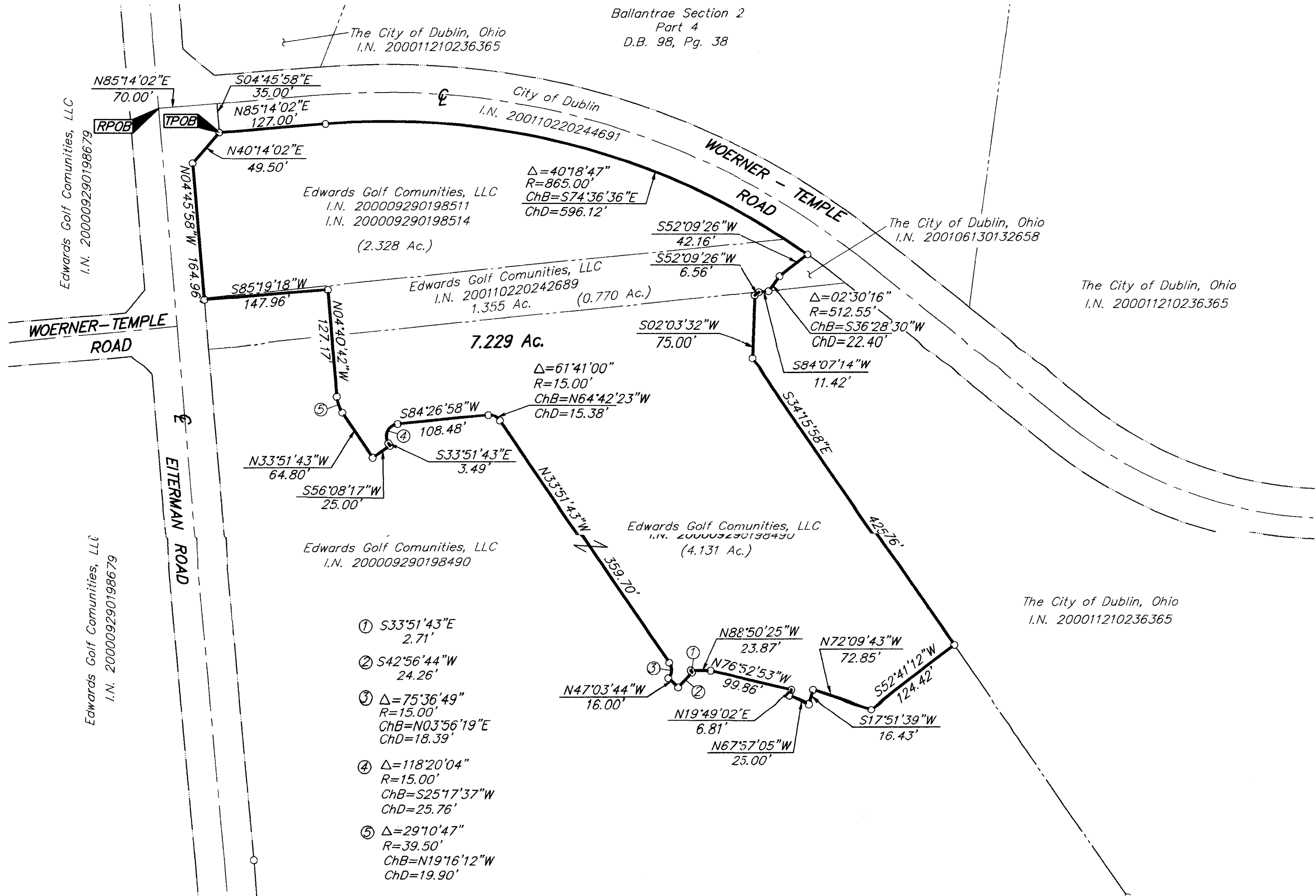


# SURVEY OF ACREAGE PARCEL VIRGINIA MILITARY SURVEY NO. 3453 CITY OF DUBLIN, FRANKLIN COUNTY, OHIO



- ① S33°51'43"E  
2.71'
- ② S42°56'44"W  
24.26'
- ③ Δ=75°36'49"  
R=15.00'  
ChB=N03°56'19"E  
ChD=18.39'
- ④ Δ=118°20'04"  
R=15.00'  
ChB=S25°17'37"W  
ChD=25.76'
- ⑤ Δ=29°10'47"  
R=39.50'  
ChB=N19°16'12"W  
ChD=19.90'

- = MON. FND.
- = I.P. FND.
- = I.P. SET
- = MAG. NAIL FND.
- = MAG. NAIL SET
- ▲ = R.R. SPK. FND.
- △ = R.R. SPK. SET
- ◆ = P.K. NAIL FND.

I.P.S Set are 13/16" I.D. Iron pipe w/ cap inscribed EMHT INC.



GRAPHIC SCALE  
(IN FEET)

BASIS OF BEARINGS: Bearings are based on the Ohio State Plane Coordinate System as per NAD83. Control for bearings was from coordinates of monuments 5536 & 7752, having a bearing of South 85°44'20" East, between monuments, established by the Franklin County Engineering Department, using Global Positioning System procedures and equipment.



SURVEYED & PREPARED  
BY  
**EMHT**  
CONSULTING ENGINEERS & SURVEYORS  
170 MILL STREET  
GAHANNA, OHIO 43230  
(614) 471-5150

By *Clark E. White* 5/4/02  
Professional Surveyor No. 7868

SCALE: 1" = 100'      MAY 6, 2002