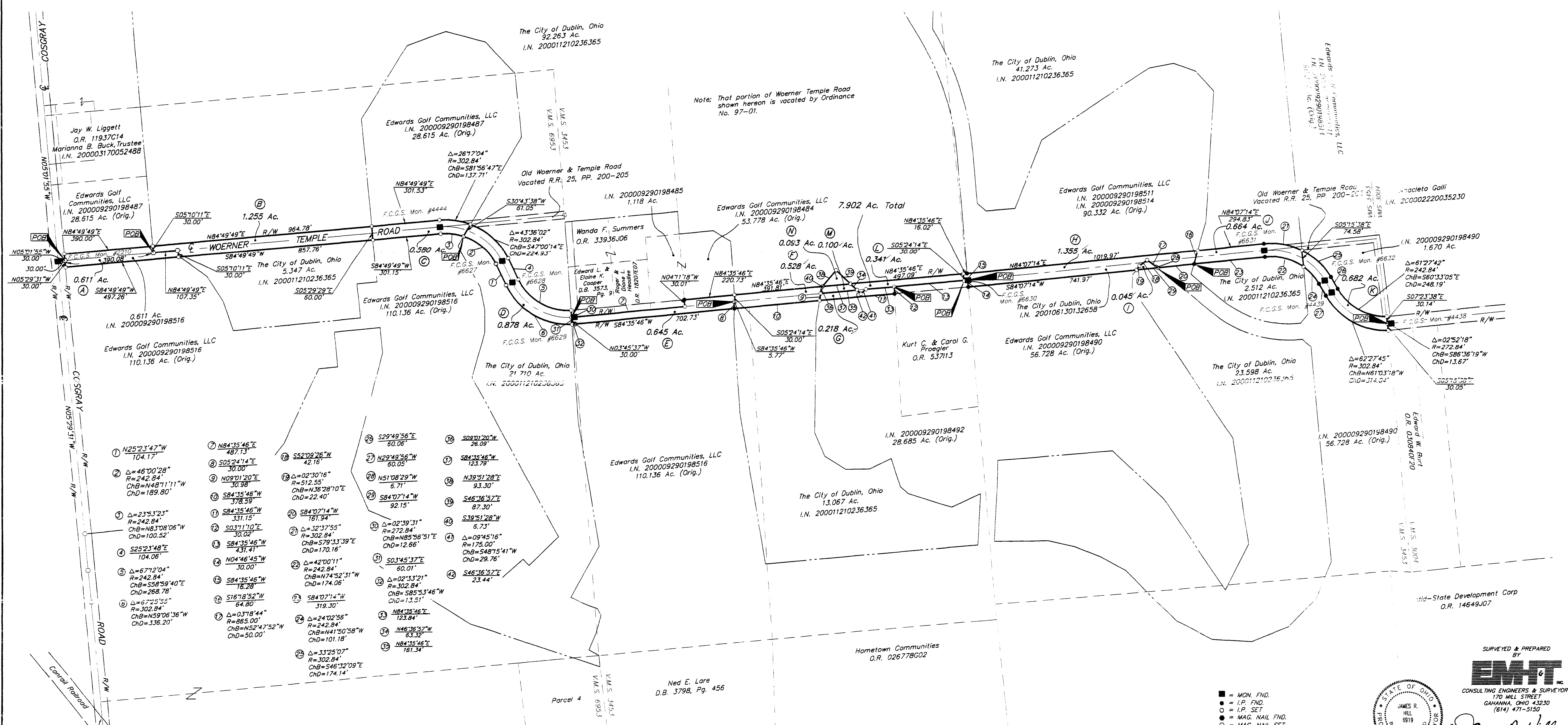


SURVEY OF ACREAGE PARCELS

VIRGINIA MILITARY SURVEY NOS. 3453 & 6953

CITY OF DUBLIN, FRANKLIN COUNTY, OHIO

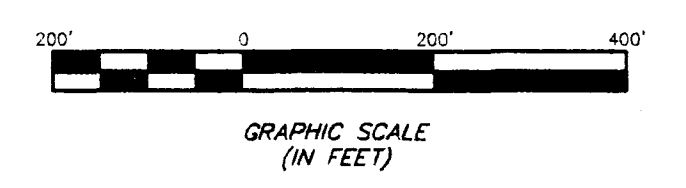
A	Edwards Golf	0.611 Ac.
B	City of Dublin	1.255 Ac.
C	Edwards Golf	0.580 Ac.
D	City of Dublin	0.878 Ac.
E	Edwards Golf	0.645 Ac.
F	City of Dublin	0.528 Ac.
G	Edwards Golf	0.218 Ac.
H	Edwards Golf	1.355 Ac.
I	City of Dublin	0.045 Ac.
J	City of Dublin	0.664 Ac.
K	Edwards Golf	0.682 Ac.
L	City of Dublin	0.341 Ac.
M	Edwards Golf	0.100 Ac.
Total		7.902 Ac.



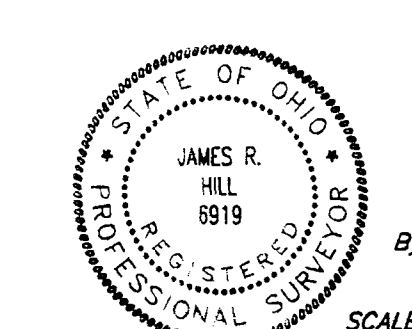
Note: That portion of Woerner Temple Road shown hereon is vacated by Ordinance No. 97-01.

- 1 N25°23'47"W 104.17'
- 2 Δ=46°00'28" R=242.84' ChB=N48°11'11"W ChD=189.80'
- 3 Δ=23°53'23" R=242.84' ChB=N83°08'06"W ChD=100.52'
- 4 S25°23'48"E 104.06'
- 5 Δ=67°12'04" R=242.84' ChB=S58°59'40"E ChD=268.78'
- 6 Δ=67°25'55" R=302.84' ChB=N59°06'36"W ChD=336.20'
- 7 NB4°35'46"E 487.13'
- 8 S05°24'14"E 30.00'
- 9 N09°01'20"E 30.98'
- 10 SB4°35'46"W 378.59'
- 11 SB4°35'46"W 331.15'
- 12 S03°11'10"E 30.02'
- 13 SB4°35'46"W 431.41'
- 14 N04°46'45"W 30.00'
- 15 SB4°35'46"W 16.28'
- 16 S16°18'52"W 64.80'
- 17 Δ=03°18'44" R=865.00' ChB=N52°47'52"W ChD=50.00'
- 18 S82°49'26"W 42.16'
- 19 Δ=02°30'16" R=512.55' ChB=N36°28'10"E ChD=22.40'
- 20 SB4°07'14"W 161.94'
- 21 Δ=32°37'55" R=302.84' ChB=S79°33'39"E ChD=170.16'
- 22 Δ=42°00'11" R=242.84' ChB=N74°52'31"W ChD=174.06'
- 23 SB4°07'14"W 319.30'
- 24 Δ=24°02'56" R=242.84' ChB=N41°50'58"W ChD=101.18'
- 25 Δ=33°25'07" R=302.84' ChB=S46°32'09"E ChD=174.14'
- 26 S29°49'56"E 60.06'
- 27 N29°49'56"W 60.05'
- 28 NS1°08'29"W 6.71'
- 29 SB4°07'14"W 92.15'
- 30 Δ=02°39'31" R=272.84' ChB=N85°56'51"E ChD=12.66'
- 31 S03°45'37"E 60.01'
- 32 Δ=02°33'21" R=302.84' ChB=S85°53'46"W ChD=13.51'
- 33 NB4°35'46"E 123.84'
- 34 N46°36'57"W 63.39'
- 35 NB4°35'46"E 161.34'
- 36 S09°01'20"W 26.09'
- 37 SB4°35'46"W 123.79'
- 38 N39°51'28"E 93.30'
- 39 S46°36'57"E 87.30'
- 40 S39°51'28"W 6.73'
- 41 Δ=09°45'16" R=175.00' ChB=S48°15'41"W ChD=29.76'
- 42 S46°36'57"E 23.44'

BASIS OF BEARINGS: Bearings are based on the Ohio State Plane Coordinate System as per NAD83. Control for bearings was from coordinates of monuments 5536 & 7752, having a bearing of South 85°44'20" East between monuments, established by the Franklin County Engineering Department, using Global Positioning System procedures and equipment.



- = MON. FND.
- = I.P. FND.
- = I.P. SET
- = MAG. NAIL FND.
- = MAG. NAIL SET
- ▲ = R.R. SPK. FND.
- △ = R.R. SPK. SET
- = P.K. NAIL FND.



SURVEYED & PREPARED BY
EMH
 CONSULTING ENGINEERS & SURVEYORS
 170 MILL STREET
 GAHANNA, OHIO 43230
 (614) 471-5150
 Professional Surveyor No. 6919
 SCALE: 1" = 200'
 AUGUST 14, 2001
 AUGUST 30, 2001
 OCTOBER 3, 2001
 OCTOBER 9, 2001

PROJECT: 20010926-01 (EMH) 1209-REBOS.DWG - October 09, 2001 - 8:43 AM
 PLOTTED BY: DGDGDHAW