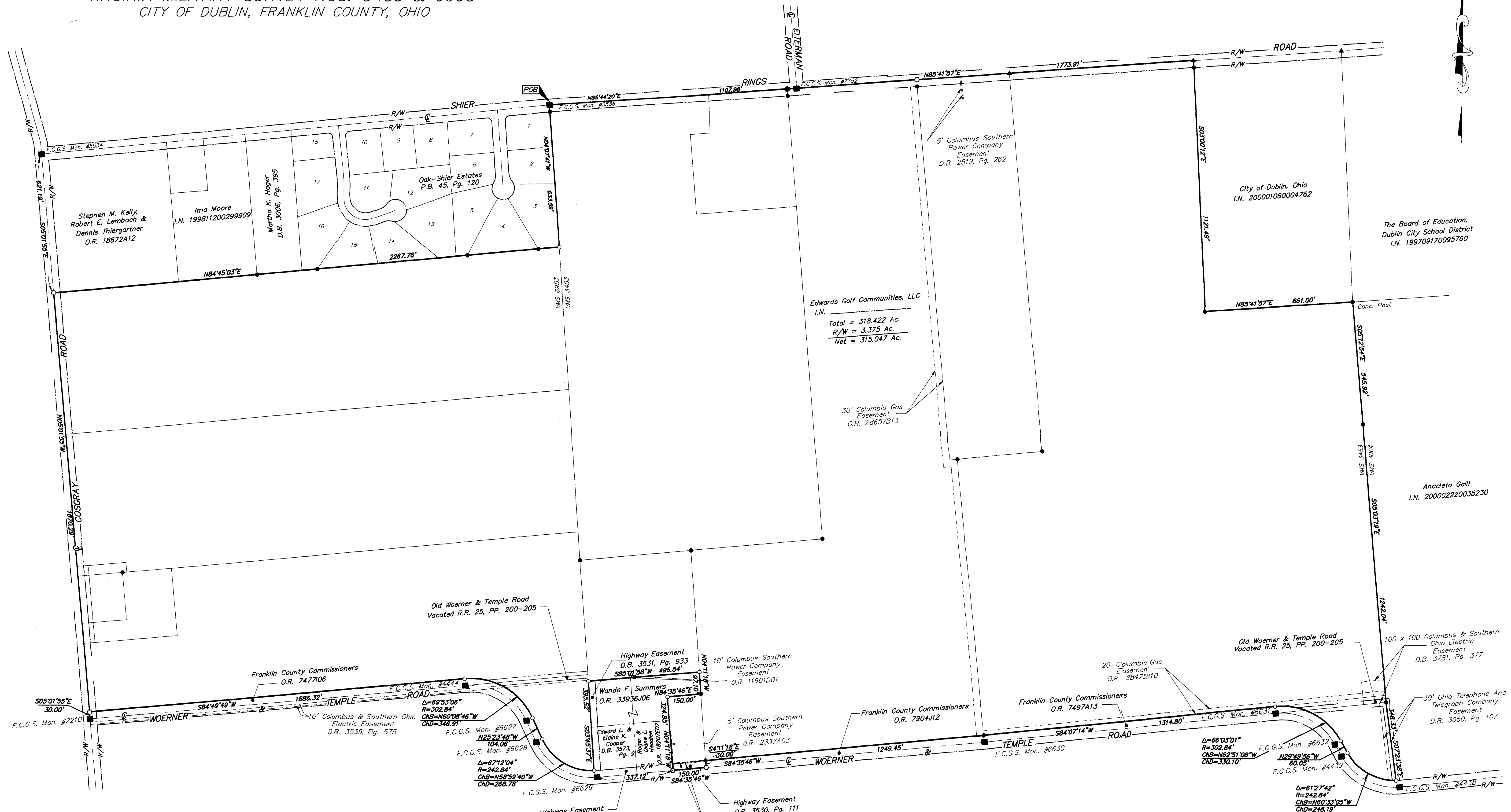


SURVEY OF ACREAGE PARCEL
VIRGINIA MILITARY SURVEY NOS. 3453 & 6953
CITY OF DUBLIN, FRANKLIN COUNTY, OHIO



Edwards Golf Communities, LLC
 I.N.
 Total = 318.422 Ac.
 R/W = 3.375 Ac.
 Net = 315.047 Ac.

City of Dublin, Ohio
 I.N. 200001060004762

The Board of Education,
 Dublin City School District
 I.N. 199709170095760

Anacleto Galli
 I.N. 200002220035230

- = MON. FND.
- = I.P. FND.
- = I.P. SET
- = MAG. NAIL FND.
- = MAG. NAIL SET
- ▲ = R.R. SPK. FND.
- △ = R.R. SPK. SET
- = P.K. NAIL FND.

I.P.S. Set are 1 3/16" I.D. Iron pipe w/ cap inscribed EMH&T.

BASIS OF BEARINGS: Bearings are based on the Ohio State Plane Coordinate System as per NAD83. Control for bearings was from coordinates of monuments 5536 & 7752, having a bearing of South 85°44'20" East between monuments, established by the Franklin County Engineering Department, using Global Positioning System procedures and equipment.



SURVEYED & PREPARED BY
EMT
 CONSULTING ENGINEERS & SURVEYORS
 170 MILL STREET
 GAHANNA, OHIO 43230
 (614) 471-5150

By *Matthew A. Kirk*
 Professional Surveyor No. 7865
 SCALE: 1" = 200'
 SEPTEMBER 12, 2000

C:\PROJECT\20000225.01\DWG\00525BVL.DWG - 0 XREFS - PLOTTED BY JUBUSHBY - August 30, 2000 - 4:29 PM