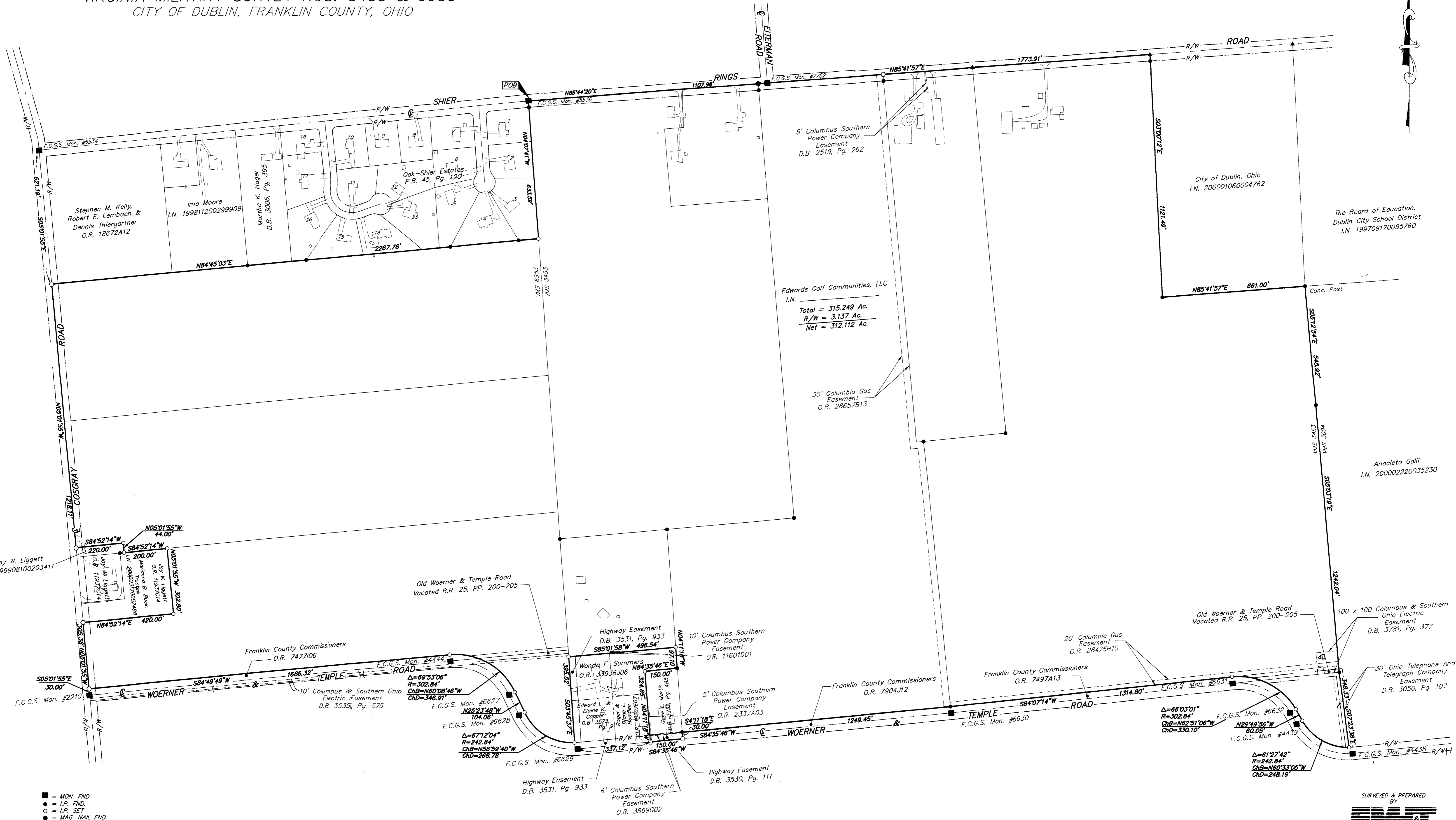


SURVEY OF ACREAGE PARCEL
VIRGINIA MILITARY SURVEY NOS. 3453 & 6953
CITY OF DUBLIN, FRANKLIN COUNTY, OHIO

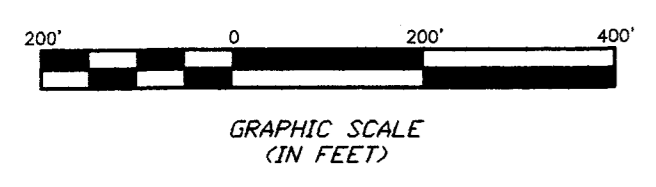


Rec'd 27 Sep 00 10:02 AM
 Q:\PROJECTS\20000525.01\DWG\032525BWB.DWG - O XREFS - PLOTTED BY JMACLEAN - September 27, 2000 - 10:02 AM

- = MON. FND.
 - = I.P. FND.
 - = I.P. SET
 - = MAG. NAIL FND.
 - = MAG. NAIL SET
 - △ = R.R. SPK. FND.
 - △ = R.R. SPK. SET
 - ◆ = P.K. NAIL FND.
- I.P.S. Set are 13/16" I.D. Iron pipe W/ cap inscribed EMH&T.

BASIS OF BEARINGS: Bearings are based on the Ohio State Plane Coordinate System as per NAD83. Control for bearings was from coordinates of monuments 5536 & 7752, having a bearing of South 85°44'20" East between monuments, established by the Franklin County Engineering Department, using Global Positioning System procedures and equipment.

NOTE: The Buildings and Topographic information shown hereon were taken from Franklin County G.I.S. Aerial Mapping and from actual field measurements



SURVEYED & PREPARED BY
EMT INC.
 CONSULTING ENGINEERS & SURVEYORS
 170 MILL STREET
 GAHANNA, OHIO 43230
 (614) 471-5150

By *Matthew A. Kirk*
 Professional Surveyor No. 7865
 SCALE: 1" = 200'
 SEPTEMBER 12, 2000
 SEPTEMBER 19, 2000
 SEPTEMBER 25, 2000