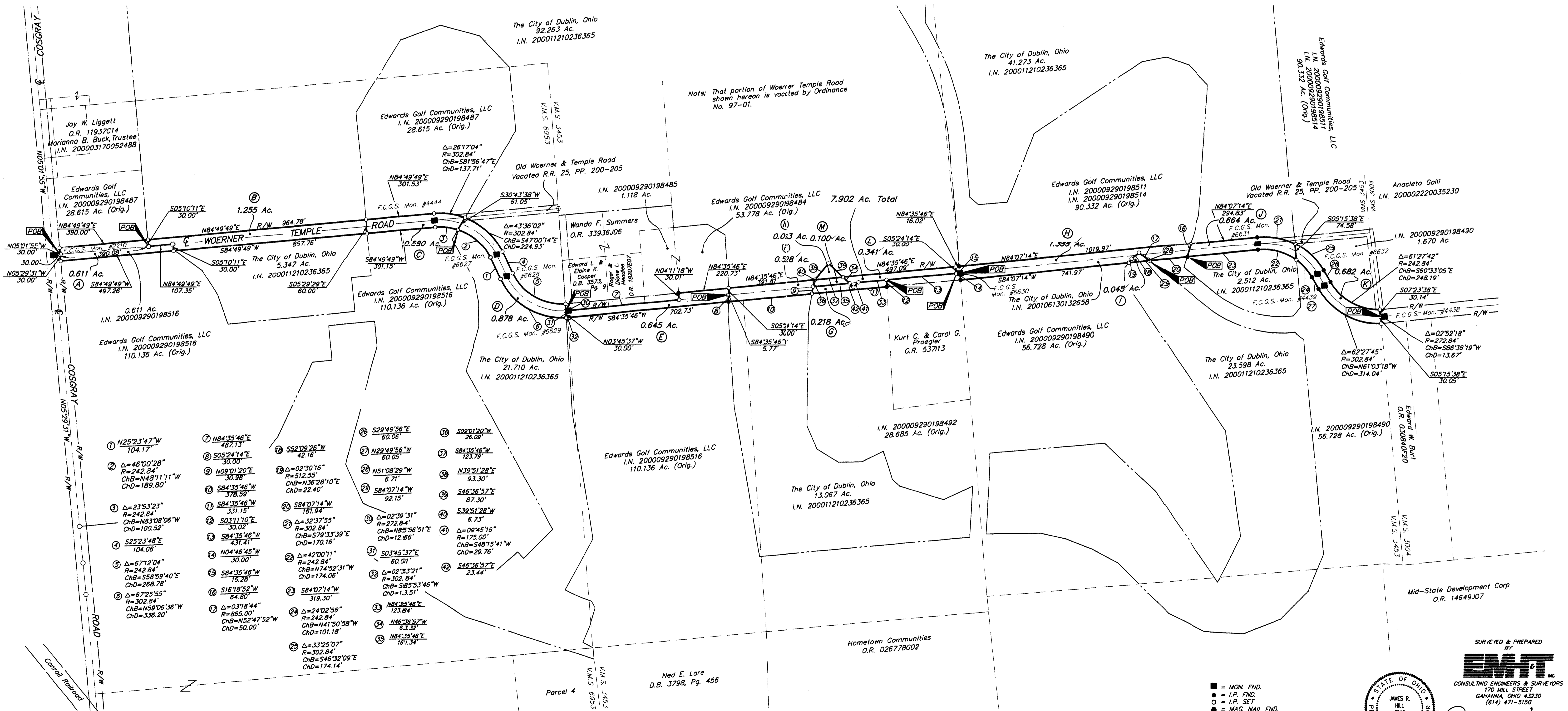


SURVEY OF ACREAGE PARCELS

VIRGINIA MILITARY SURVEY NOS. 3453 & 6953

CITY OF DUBLIN, FRANKLIN COUNTY, OHIO

A	Edwards Golf	0.611 Ac.
B	City of Dublin	1.255 Ac.
C	Edwards Golf	0.580 Ac.
D	City of Dublin	1.878 Ac.
E	Edwards Golf	1.645 Ac.
F	City of Dublin	1.528 Ac.
G	Edwards Golf	0.218 Ac.
H	Edwards Golf	1.355 Ac.
I	City of Dublin	2.045 Ac.
J	City of Dublin	0.664 Ac.
K	Edwards Golf	2.682 Ac.
L	City of Dublin	1.341 Ac.
M	Edwards Golf	0.100 Ac.
Total		7.902 Ac.



- | | | | | |
|--|--|---|--|--|
| 1 N25°23'47"W
104.17' | 7 N84°35'46"E
487.13' | 18 S52°08'26"W
42.16' | 27 N29°49'56"W
60.05' | 36 S84°35'46"W
123.79' |
| 2 Δ=46°00'28"
R=242.84'
ChB=N48°11'11"W
ChD=189.80' | 8 S05°24'14"E
30.00' | 19 Δ=02°30'16"
R=512.55'
ChB=N36°28'10"E
ChD=22.40' | 28 N51°08'29"W
6.71' | 37 N39°51'28"E
93.30' |
| 3 Δ=23°53'23"
R=242.84'
ChB=N83°08'06"W
ChD=100.52' | 9 N09°01'20"E
30.98' | 20 S84°07'14"W
161.94' | 29 S84°07'14"W
92.15' | 38 S46°36'57"E
87.30' |
| 4 S25°23'48"E
104.06' | 10 S84°35'46"W
378.59' | 21 Δ=32°37'55"
R=302.84'
ChB=579°33'39"E
ChD=170.16' | 30 S84°07'14"W
92.15' | 39 S39°51'28"W
6.73' |
| 5 Δ=67°12'04"
R=242.84'
ChB=S58°59'40"E
ChD=268.78' | 11 S84°35'46"W
331.15' | 22 Δ=42°00'11"
R=242.84'
ChB=N74°52'31"W
ChD=174.06' | 31 Δ=02°39'31"
R=272.84'
ChB=N85°56'51"E
ChD=12.66' | 40 S39°51'28"W
6.73' |
| 6 Δ=67°25'55"
R=302.84'
ChB=N59°06'36"W
ChD=336.20' | 12 S03°11'10"E
30.02' | 23 Δ=02°33'21"
R=302.84'
ChB=S85°53'46"W
ChD=13.51' | 32 Δ=02°33'21"
R=302.84'
ChB=S85°53'46"W
ChD=13.51' | 41 Δ=09°45'16"
R=175.00'
ChB=S48°15'41"W
ChD=29.76' |
| | 13 S84°35'46"W
431.41' | 33 N84°35'46"E
123.84' | 33 N84°35'46"E
123.84' | 42 S46°36'57"E
23.44' |
| | 14 N04°46'45"W
30.00' | 34 N46°36'57"W
8.332' | 34 N46°36'57"W
8.332' | |
| | 15 S84°35'46"W
18.28' | 35 N84°35'46"E
161.34' | 35 N84°35'46"E
161.34' | |
| | 16 S16°18'52"W
64.80' | 36 N84°35'46"E
161.34' | | |
| | 17 Δ=03°18'44"
R=865.00'
ChB=N52°47'52"W
ChD=50.00' | 37 S24°02'56"
R=302.84'
ChB=N41°50'58"W
ChD=101.18' | | |
| | 18 S84°07'14"W
319.30' | 38 Δ=33°25'07"
R=302.84'
ChB=S46°32'09"E
ChD=174.14' | | |

BASIS OF BEARINGS: Bearings are based on the Ohio State Plane Coordinate System as per NAD83. Control for bearings was from coordinates of monuments 5536 & 7752, having a bearing of South 85°44'20" East between monuments, established by the Franklin County Engineering Department, using Global Positioning System procedures and equipment.



■ = MON. FND.
 ● = I.P. FND.
 ○ = I.P. SET
 ○ = MAG. NAIL FND.
 ○ = MAG. NAIL SET
 ▲ = R.R. SPK. FND.
 ▲ = R.R. SPK. SET
 ● = P.K. NAIL FND.

I.P.S. Set are 13/16" I.D. Iron pipe w/ cap inscribed EMH&T, Inc.

SURVEYED & PREPARED BY
EMH&T
 CONSULTING ENGINEERS & SURVEYORS
 170 MILL STREET
 GAHANNA, OHIO 43230
 (614) 471-5150

JAMES R. HILL
 6919
 Professional Surveyor No. 6919

SCALE: 1" = 200'
 AUGUST 14, 2001
 AUGUST 30, 2001
 OCTOBER 3, 2001
 OCTOBER 9, 2001

EDWARDS LAND CO./20010936.01/10936BVS

G:\PROJECT\20010936.01\DWG\10936BVS.DWG - D:\REFS - PLOTTED BY DODDMAN - October 09, 2001 - 8:43 AM