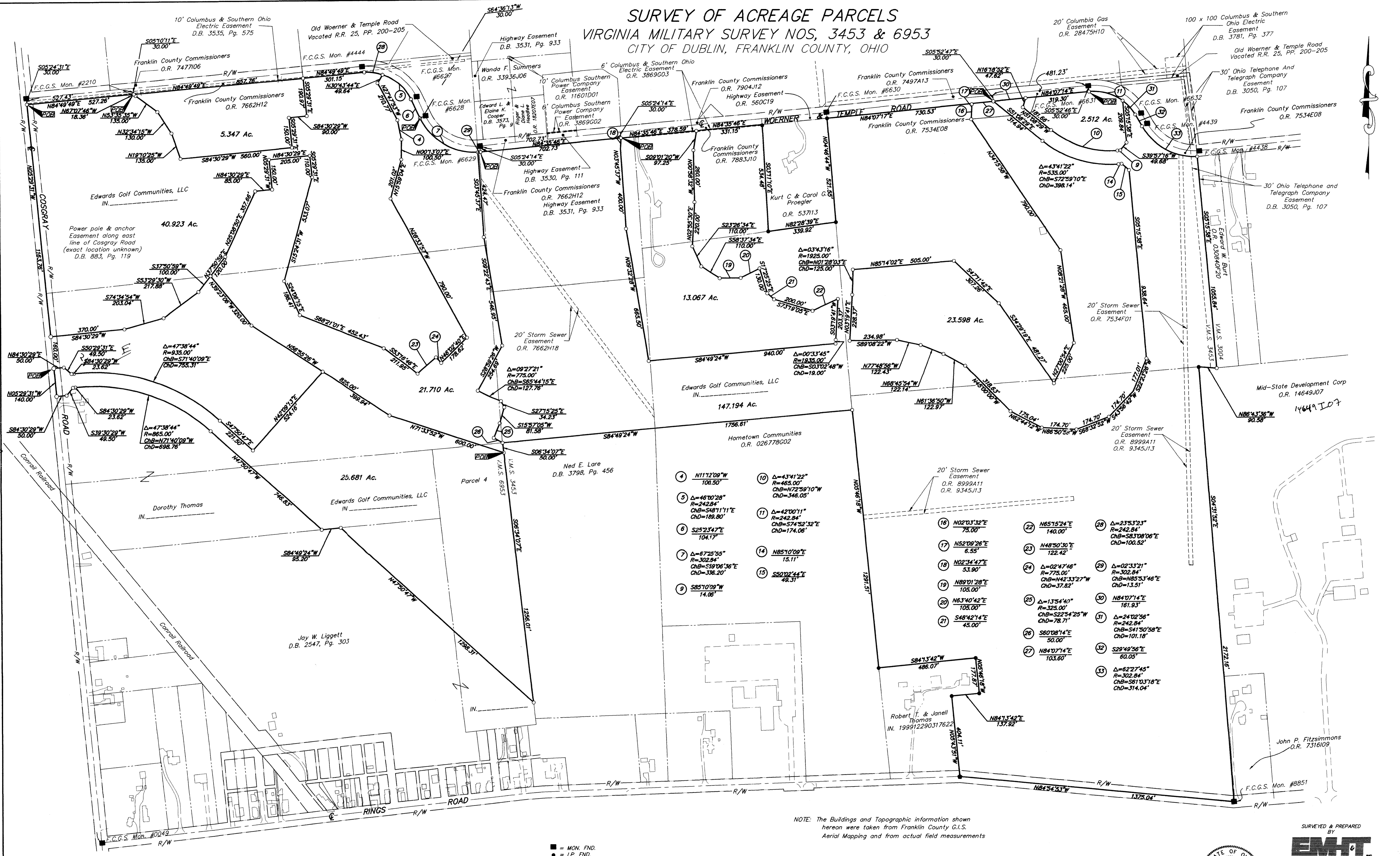


# SURVEY OF ACREAGE PARCELS

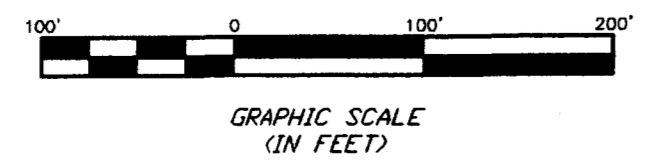
## VIRGINIA MILITARY SURVEY NOS, 3453 & 6953

### CITY OF DUBLIN, FRANKLIN COUNTY, OHIO



- |   |  |    |  |    |  |
|---|--|----|--|----|--|
| 4 | N1172°09'W<br>100.50'                                      | 10 | Δ=43°41'22"<br>R=465.00'<br>ChB=N72°59'10"W<br>ChD=346.05' | 28 | Δ=23°53'23"<br>R=242.84'<br>ChB=S83°08'06"E<br>ChD=100.82' |
| 5 | Δ=46°00'28"<br>R=242.84'<br>ChB=S48°11'11"E<br>ChD=189.80' | 11 | Δ=42°00'11"<br>R=242.84'<br>ChB=S74°52'32"E<br>ChD=174.06' | 29 | Δ=02°33'21"<br>R=302.84'<br>ChB=N85°53'46"E<br>ChD=13.51'  |
| 6 | S25°23'47"E<br>104.17'                                     | 14 | N85°10'09"E<br>15.11'                                      | 30 | N84°07'14"E<br>161.93'                                     |
| 7 | Δ=67°25'55"<br>R=302.84'<br>ChB=S39°06'36"E<br>ChD=336.20' | 15 | S50°02'44"E<br>48.31'                                      | 31 | Δ=24°02'56"<br>R=242.84'<br>ChB=S41°50'58"E<br>ChD=101.18' |
| 8 | S85°10'08"W<br>14.06'                                      | 16 | N02°03'32"E<br>75.00'                                      | 32 | S29°49'56"E<br>60.05'                                      |
|   |  | 17 | N52°08'26"E<br>6.55'                                       | 33 | Δ=62°27'45"<br>R=302.84'<br>ChB=S81°03'18"E<br>ChD=314.04' |
|   |  | 18 | N02°34'47"E<br>53.90'                                      |    |  |
|   |  | 19 | N89°01'28"E<br>105.00'                                     |    |  |
|   |  | 20 | N63°40'42"E<br>105.00'                                     |    |  |
|   |  | 21 | S48°42'14"E<br>45.00'                                      |    |  |
|   |  | 22 | N65°15'24"E<br>140.00'                                     |    |  |
|   |  | 23 | N48°50'30"E<br>122.42'                                     |    |  |
|   |  | 24 | Δ=02°47'48"<br>R=775.00'<br>ChB=N42°33'27"W<br>ChD=37.82'  |    |  |
|   |  | 25 | Δ=13°54'40"<br>R=325.00'<br>ChB=S22°54'25"W<br>ChD=78.71'  |    |  |
|   |  | 26 | S80°08'14"E<br>50.00'                                      |    |  |
|   |  | 27 | N84°07'14"E<br>103.60'                                     |    |  |

**BASIS OF BEARINGS:** Bearings are based on the Ohio State Plane Coordinate System as per NAD83. Control for bearings was from coordinates of monuments 5536 & 7752, having a bearing of South 85°44'20" East between monuments, established by the Franklin County Engineering Department, using Global Positioning System procedures and equipment.



- = MON. FND.
  - = I.P. FND.
  - = I.P. SET
  - = MAG. NAIL FND.
  - = MAG. NAIL SET
  - ▲ = R.R. SPK. FND.
  - ▲ = R.R. SPK. SET
  - = P.K. NAIL FND.
- I.P.S. Set are 1 1/2" I.D. Iron pipe W/ cap inscribed EM&RT.

NOTE: The Buildings and Topographic information shown hereon were taken from Franklin County G.I.S. Aerial Mapping and from actual field measurements



SURVEYED & PREPARED BY  
**EMT**  
CONSULTING ENGINEERS & SURVEYORS  
170 MILL STREET  
GAHANNA, OHIO 43230  
(614) 471-5150  
By *Matthew A. Kirk*  
Professional Surveyor No. 7865  
SCALE: 1" = 200'  
SEPTEMBER 28, 2000