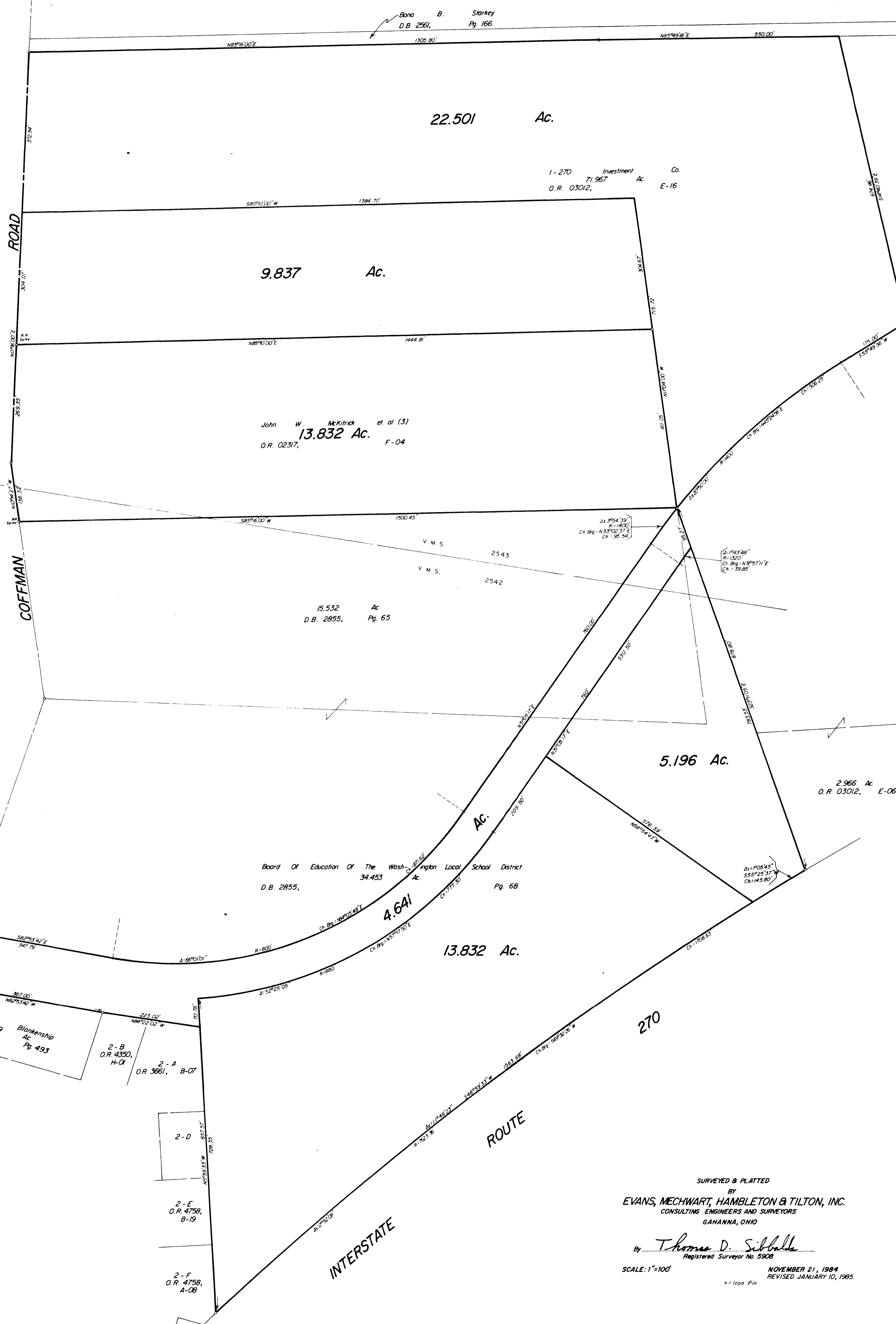


**SURVEY  
OF  
ACREAGE PARCELS  
VIRGINIA MILITARY SURVEY  
NUMBERS 2542 & 2543  
VILLAGE OF DUBLIN, FRANKLIN COUNTY, OHIO**

0-108-C



SURVEYED & PLATTED  
BY  
**EVANS, MECHWART, HAMLETON & TILTON, INC.**  
CONSULTING ENGINEERS AND SURVEYORS  
GAHANNA, OHIO

By Thomas D. Sibbald  
Registered Surveyor No. 5908

SCALE: 1"=100'  
NOVEMBER 21, 1984  
REVISED JANUARY 10, 1985