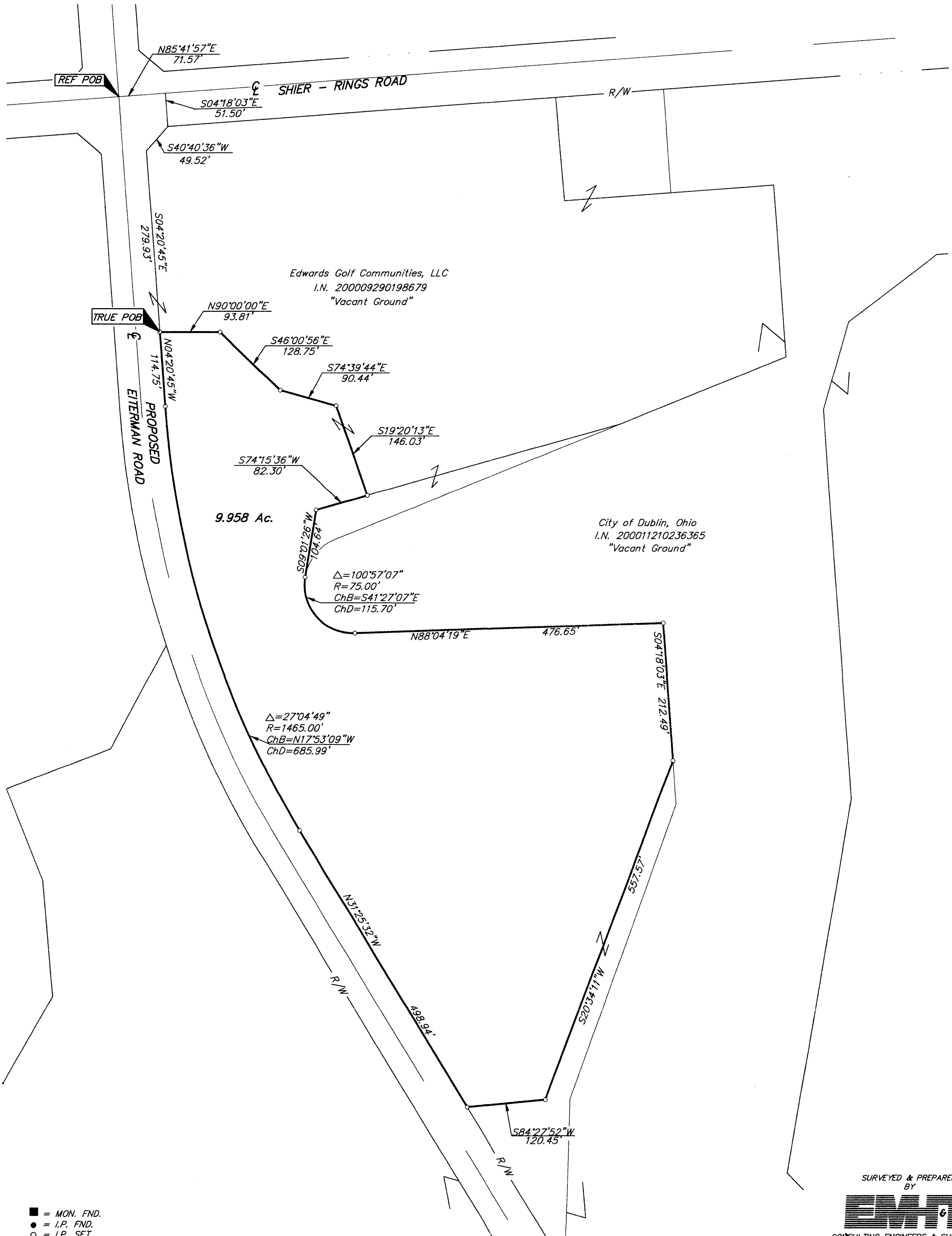


50117-0011 200300

# SURVEY OF ACREAGE PARCEL

## VIRGINIA MILITARY SURVEY NO. 3453

### CITY OF DUBLIN, FRANKLIN COUNTY, OHIO



- = MON. FND.
- = I.P. FND.
- = I.P. SET
- = MAG. NAIL FND.
- = MAG. NAIL SET
- ▲ = R.R. SPK. FND.
- △ = R.R. SPK. SET
- ◆ = P.K. NAIL FND.

I.P. Set are 13/16" I.D. Iron pipe W/ cap inscribed EMH&T, Inc.



GRAPHIC SCALE  
(IN FEET)

**BASIS OF BEARINGS:** Bearings are based on the Ohio State Plane Coordinate System as per NAD83. Control for bearings was from coordinates of Franklin County Geodetic Survey Monument Numbers 5536 and 7752, having a bearing of South 85°44'20" East, established by the Franklin County Engineering Department, using Global Positioning procedures and equipment.



SURVEYED & PREPARED BY  
**EMH&T** INC.  
CONSULTING ENGINEERS & SURVEYORS  
170 MILL STREET  
GAHANNA, OHIO 43230  
(614) 471-5150

By *Jeffrey A. Miller*  
Professional Surveyor No. 7211  
SCALE: 1" = 100' June 1, 2001

C:\PROJECT\20000525.01\DWG\00525B\16.DWG -- 0 XREFS: -- PLOTTED BY EMILLER -- May 31, 2001 -- 4:46 PM