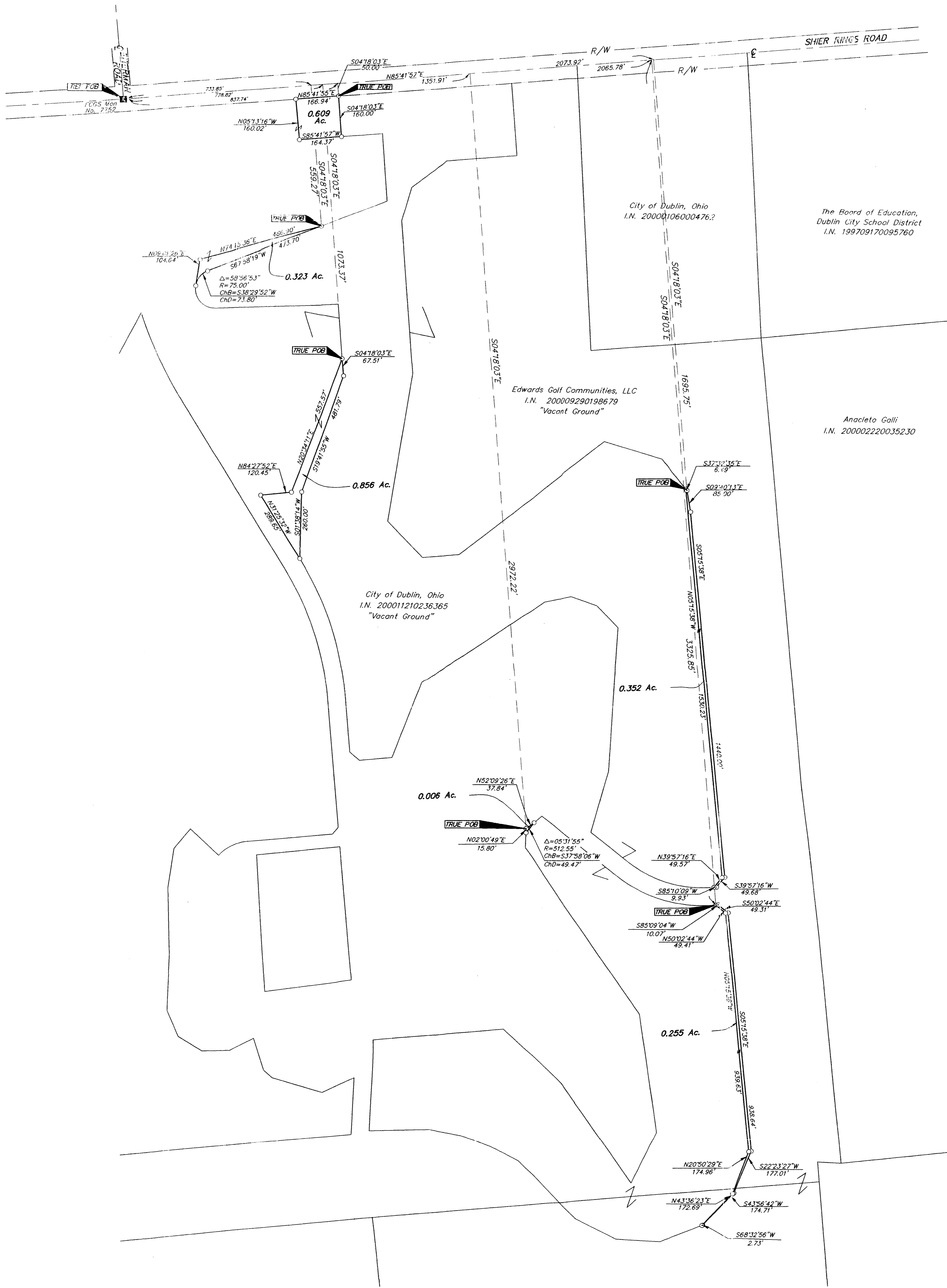


SURVEY OF ACREAGE PARCEL
VIRGINIA MILITARY SURVEY NO. 3453
CITY OF DUBLIN, FRANKLIN COUNTY, OHIO



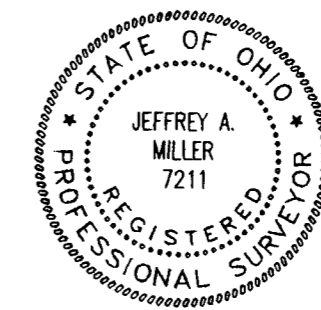
BASIS OF BEARINGS: Bearings are based on the Ohio State Plane Coordinate System as per NAD 83. Control for bearings was from coordinates of Franklin County Geodetic Survey Monument Numbers 5536 and 7752, having a bearing of South 85° 44' 20" East, established by the Franklin County Engineering Department, using Global Positioning procedures and equipment.

- = MON. FND.
- = I.P. FND.
- = I.P. SET
- = MAG. NAIL FND.
- = MAG. NAIL SET
- ▲ = R.R. SPK. FND.
- △ = R.R. SPK. SET
- = P.K. NAIL FND.

I.P.S. Set are 1 3/16" I.D. Iron pipe w/ cap inscribed EMH&T, Inc.



GRAPHIC SCALE (IN FEET)



By *Jeffrey A. Miller* 6-13-01
 Professional Surveyor No. 7211

SURVEYED & PREPARED BY
EMH&T INC.
 CONSULTING ENGINEERS & SURVEYORS
 170 MILL STREET
 GAHANNA, OHIO 43230
 (614) 471-5150

D:\PROJECT\20000525.01\DWG\00525BVT4.DWG - 0 AREFS: - PLOTTED BY: TBAUM - April 10, 2001 - 1:00 PM