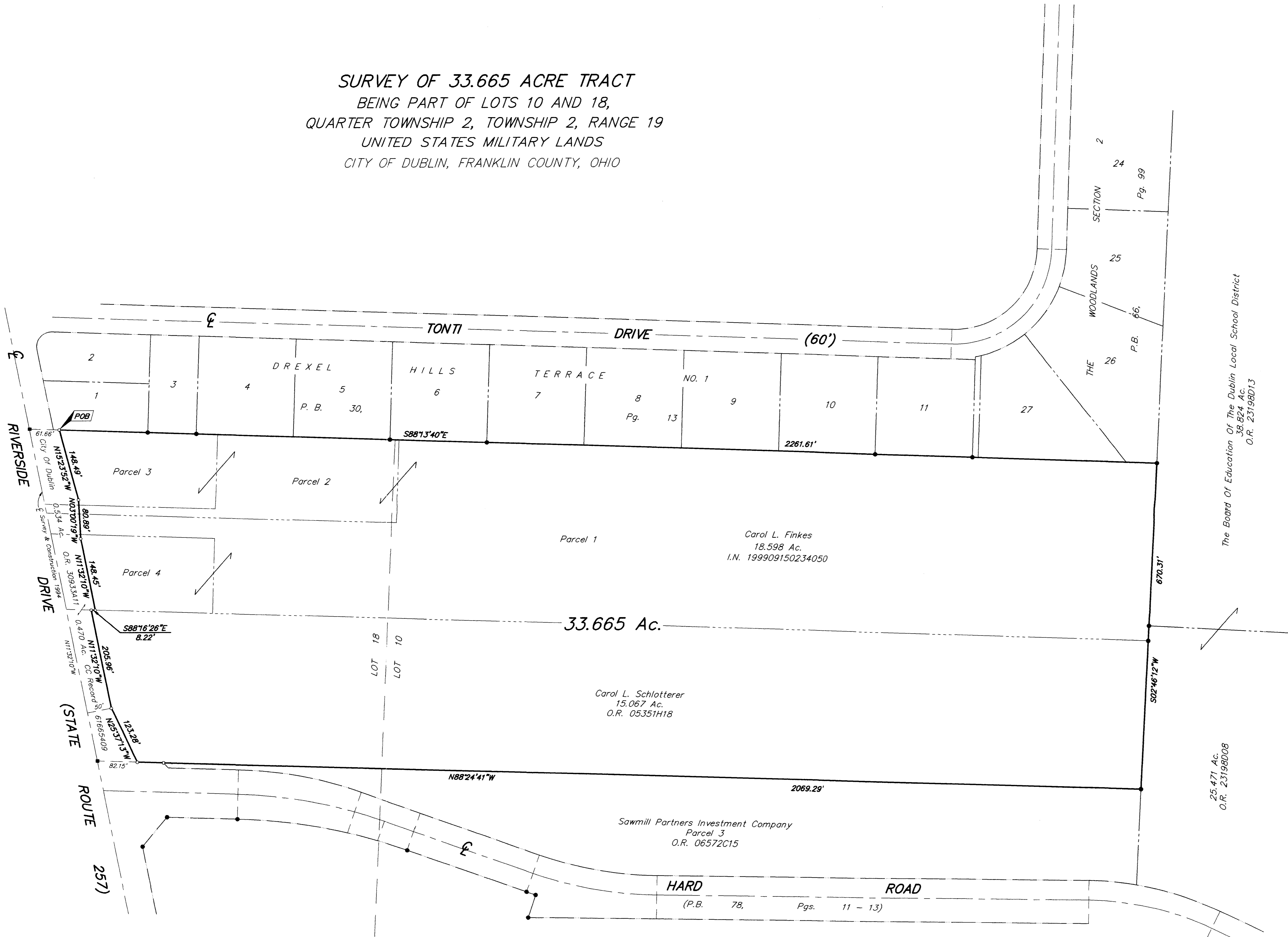


**SURVEY OF 33.665 ACRE TRACT**  
 BEING PART OF LOTS 10 AND 18,  
 QUARTER TOWNSHIP 2, TOWNSHIP 2, RANGE 19  
 UNITED STATES MILITARY LANDS  
 CITY OF DUBLIN, FRANKLIN COUNTY, OHIO

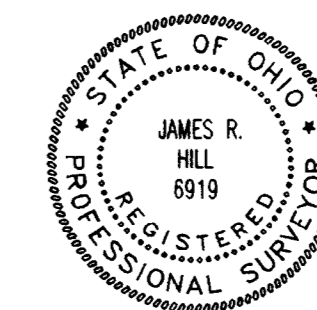
- = MON. SET
  - = I.P. FND.
  - = I.P. SET
  - = MAG. NAIL FND.
  - = MAG. NAIL SET
  - ▲ = R.R. SPK. FND.
  - △ = R.R. SPK. SET
  - = P.K. NAIL FND.
- I.P.S. Set are 1 3/16" I.D. Iron pipe w/ cap inscribed EMT&T, Inc.



**BASIS OF BEARINGS:** Bearings are based on the Ohio State Plane Coordinate System as per NAD83. Control for bearings was from coordinates of monuments 7769 & 7772, having a bearing of North  $02^{\circ}34'54''$  East, established by the Franklin County Engineering Department, using Global Positioning System procedures and equipment.

SURVEYED & PREPARED  
 BY  
**EMT**  
 CONSULTING ENGINEERS & SURVEYORS  
 170 HILL STREET  
 GAHANNA, OHIO 43230  
 (614) 471-5150

By *James R. Hill*  
 Professional Surveyor No. 6819



SCALE: 1" = 100'      DECEMBER 7, 2001