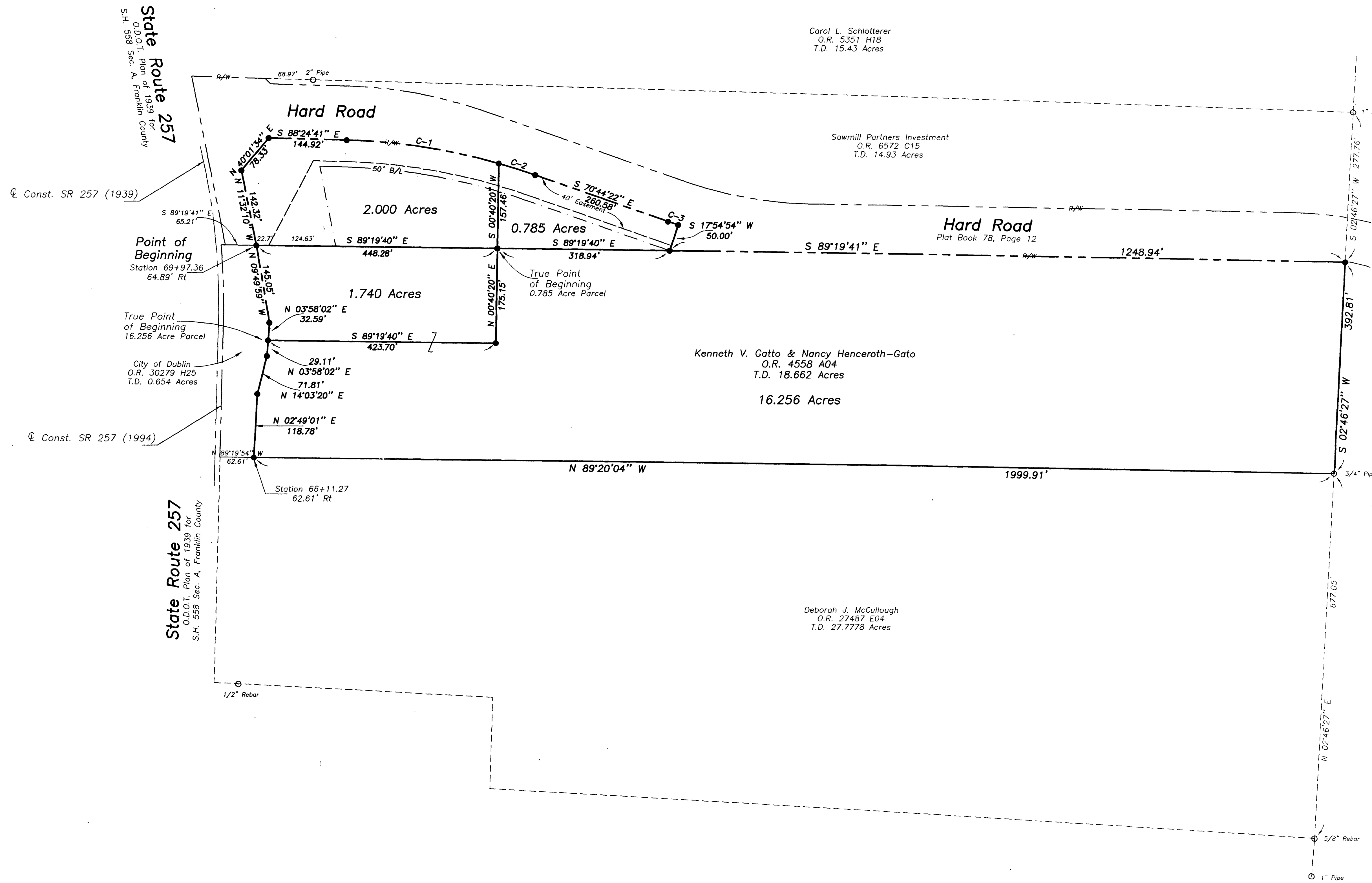


— SURVEY FOR MIKE JONES —
 BEING A PART OF QUARTER TOWNSHIP 2,
 TOWNSHIP-2, RANGE-19, UNITED STATES MILITARY LANDS,
 CITY OF DUBLIN, FRANKLIN COUNTY, OHIO

Curve Table

NUMBER	DELTA	CHORD BEARING	CHORD DISTANCE	TANGENT	RADIUS	LENGTH
C-1	14°10'06"	S 81°19'39" E	286.59	144.40	1161.91	287.32
C-2	03°30'14"	S 72°29'29" E	71.05	35.54	1161.91	71.06
C-3	01°20'45"	S 71°24'44" E	19.73	9.87	840.00	19.73

THE BEARINGS OF THIS PLAT WERE BASED ON THE GRID BEARING OF N 21°59'12" E FROM THE OHIO COORDINATE SYSTEM, SOUTH ZONE, AS DETERMINED BY FIELD MEASUREMENTS BETWEEN FRANKLIN COUNTY ENGINEER'S MONUMENTS STATION FRANK 139, AND STATION 89 AS REFERENCED IN A SURVEY PERFORMED BY P.D. ZANDE & ASSOCIATES, INC. ON 5-9-95.



Carol L. Schlotterer
 O.R. 5351 H18
 T.D. 15.43 Acres

Sawmill Partners Investment
 O.R. 6572 C15
 T.D. 14.93 Acres

Kenneth V. Gatto & Nancy Hencerath-Gato
 O.R. 4558 A04
 T.D. 18.662 Acres

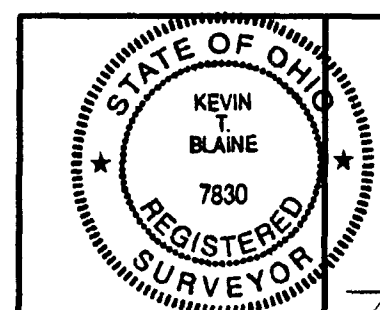
Deborah J. McCullough
 O.R. 27487 E04
 T.D. 27.778 Acres

SCALE 1"=100'

PERTINENT DOCUMENTS
 U.S.G.S. 7.5 MINUTE SERIES
 (NORTHWEST COLUMBUS)
 FRANKLIN COUNTY TAX MAPS
 ALL RECORDED INFORMATION
 SHOWN WERE USED AS
 SOURCE DOCUMENTS

NOTES:
 Occupational lines have not been located
 in the field and are not represented on
 this survey.
 This survey was prepared without the benefit
 of a title policy, there may be easements or
 Right-of-Ways which exist but are not shown.

LEGEND
 ○ = I.P. Found
 ● = I.P. Set 5/8" Diameter Rebar with Red I.D. Cap Labeled "J&H P.S. 6878"



KEVIN T. BLAINE P.S. 7830

RECEIVED	
Foundation Survey	Final Survey
Ord. No.	Ord. No.
Date	Date

REVISED
 DRAWN: DLG
 CHECKED: KTB
 P.B.

JOBES HENDERSON & ASSOCIATES INC.
 CIVIL ENGINEERING & LAND SURVEYING
 59 GRANT STREET
 NEWARK, OHIO 43055
 TEL. (614)344-5451
 FAX (614)344-5746

Boundary Survey
 for
 Mike Jones

DWG. NO.
 98-10
 DATE: 1-23-97
 SHEET: 1 OF 1