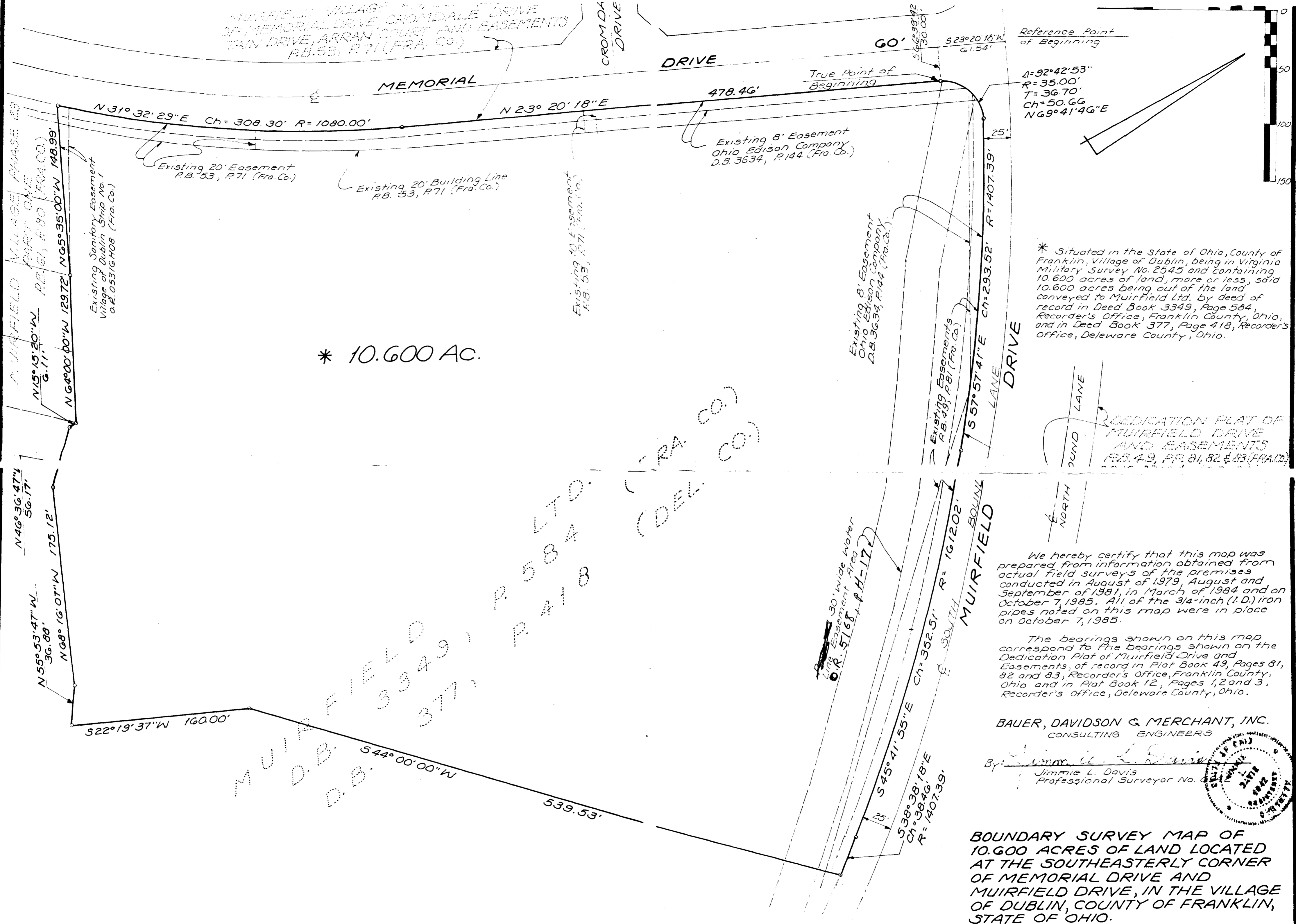


MUIRFIELD VILLAGE  
 OF MEMORIAL DRIVE, CROMDALE DRIVE  
 MAIN DRIVE, ARRAN COURT AND EASEMENTS  
 P.B. 53, P. 71 (FRA. CO.)



Reference Point  
 of Beginning

$\Delta = 92^\circ 42' 53''$   
 $R = 35.00'$   
 $T = 36.70'$   
 $Ch = 50.66'$   
 $NG 9^\circ 41' 46'' E$

\* 10.600 AC.

\* Situated in the State of Ohio, County of Franklin, Village of Dublin, being in Virginia Military Survey No. 2545 and containing 10.600 acres of land, more or less, said 10.600 acres being out of the land conveyed to Muirfield Ltd. by deed of record in Deed Book 3349, Page 584, Recorder's Office, Franklin County, Ohio, and in Deed Book 377, Page 418, Recorder's Office, Delaware County, Ohio.

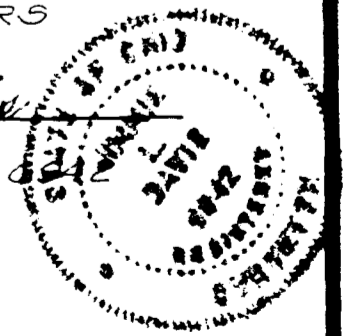
DEDICATION PLAT OF  
 MUIRFIELD DRIVE  
 AND EASEMENTS  
 P.B. 49, P. 81, 82 & 83 (FRA. CO.)

We hereby certify that this map was prepared from information obtained from actual field surveys of the premises conducted in August of 1979, August and September of 1981, in March of 1984 and on October 7, 1985. All of the 3/4-inch (I.D.) iron pipes noted on this map were in place on October 7, 1985.

The bearings shown on this map correspond to the bearings shown on the Dedication Plat of Muirfield Drive and Easements, of record in Plat Book 49, Pages 81, 82 and 83, Recorder's Office, Franklin County, Ohio and in Plat Book 12, Pages 1, 2 and 3, Recorder's Office, Delaware County, Ohio.

BAUER, DAVIDSON & MERCHANT, INC.  
 CONSULTING ENGINEERS

By: *Jimmie L. Davis*  
 Jimmie L. Davis  
 Professional Surveyor No. 6122



BOUNDARY SURVEY MAP OF  
 10.600 ACRES OF LAND LOCATED  
 AT THE SOUTHEASTERLY CORNER  
 OF MEMORIAL DRIVE AND  
 MUIRFIELD DRIVE, IN THE VILLAGE  
 OF DUBLIN, COUNTY OF FRANKLIN,  
 STATE OF OHIO.

MUIRFIELD LTD.  
 (FRA. CO.)  
 (DEL. CO.)  
 P. 584  
 P. 418  
 P. 3349  
 P. 377  
 MUIRFIELD D.B.  
 D.B.