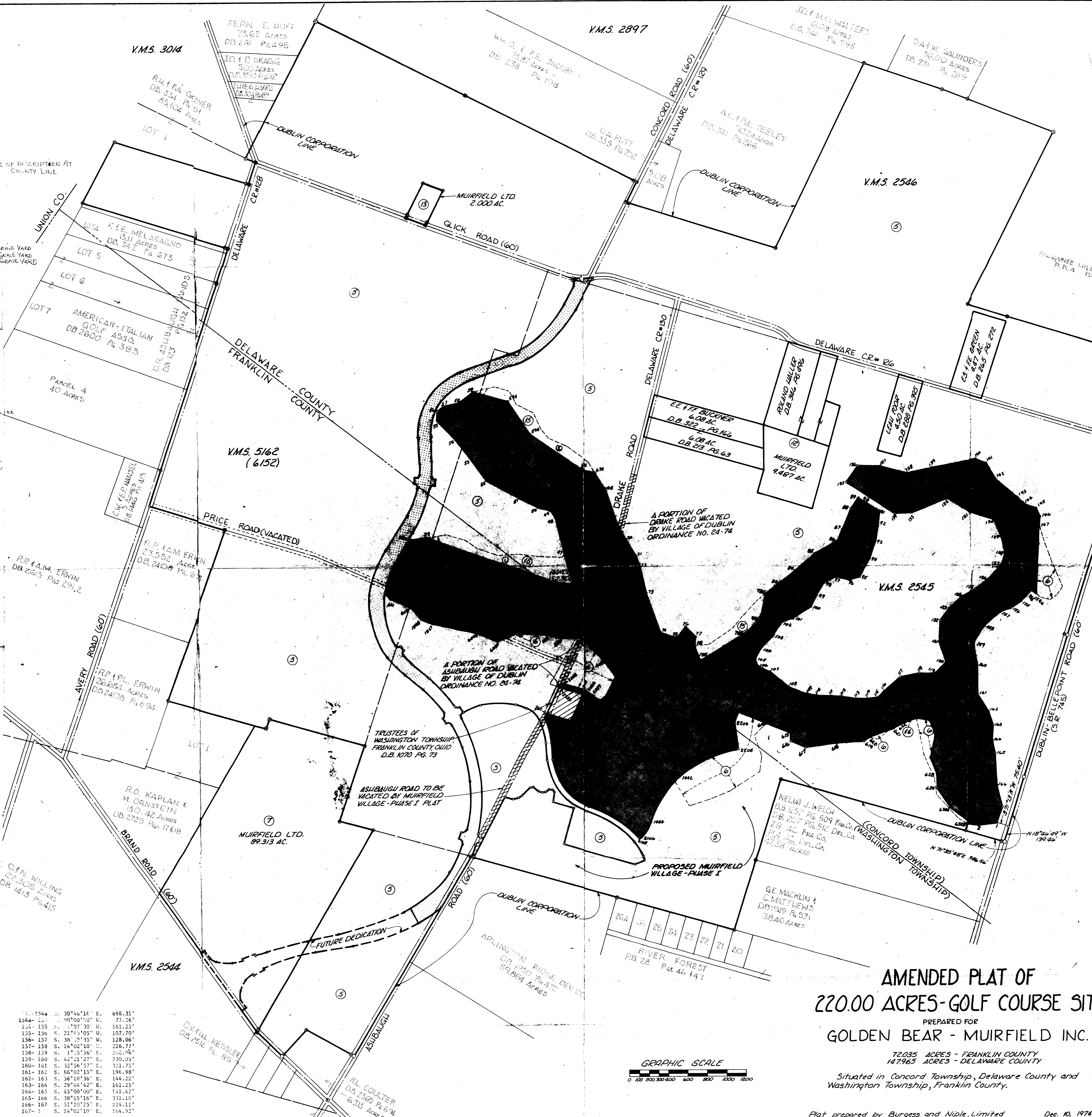


Course	Bearing	Distance	Radius
1-2	S. 49°23'55" W.	184.39'	
2-632B	S. 84°17'22" W.	102.02'	
632B-632	N. 18°24'12" W.	18.22'	
632-630A	N. 89°24'05" W.	237.82'	
630A-629	N. 64°54'14" W.	233.85'	
629-628	N. 35°52'04" W.	139.83'	
628-627	N. 56°38'31" W.	188.10'	
627-625A	N. 18°55'12" W.	224.11'	
625A-625	N. 43°54'27" W.	67.30'	
625-624	N. 63°25'02" W.	125.63'	
624-623	N. 67°32'17" W.	125.67'	
623-622	S. 36°59'10" W.	123.02'	
622-621	S. 25°53'22" W.	146.93'	
621-620	S. 36°57'17" W.	258.97'	
620-619	S. 32°24'35" W.	78.62'	
619-618	S. 31°11'03" W.	270.12'	
618-617	S. 48°24'50" W.	339.73'	
617-616	S. 30°12'18" W.	163.75'	
616-615	S. 32°27'14" W.	94.25'	
615-614	S. 77°51'20" W.	104.22'	
614-2206	S. 79°54'20" W.	189.44'	
2206-2204	S. 10°05'40" E.	140.67'	
2204-2205	S. 37°51'10" E.	276.89'	
2205-1442	S. 37°51'13" E.	669.21'	1,291.00'
1442-1444	S. 2°20'47" W.	554.26'	904.00'
1444-2106	S. 2°20'03" E.	179.56'	394.00'
2106-2105	S. 56°15'55" W.	28.50'	20.00'
2105-1453	S. 88°51'37" W.	303.91'	1,131.50'
1453-1455	N. 71°10'04" W.	631.19'	582.00'
1455-1457	N. 38°19'49" W.	175.00'	
1457-2311	N. 45°44'49" W.	193.88'	
2311-1867	N. 57°11'39" W.	32.43'	
1867-26C	S. 37°52'31" W.	15.85'	20.00'
26C-25A	N. 71°57'46" E.	258.88'	
25A-181	N. 9°01'16" W.	297.00'	
181-2333	N. 71°56'22" W.	233.69'	
2333-2332	N. 9°02'16" W.	40.50'	
2332-2331	N. 71°56'22" E.	204.01'	
2331-2330	N. 84°45'52" E.	67.38'	
2330-2329	S. 82°24'38" E.	42.69'	
2329-2348	S. 86°33'21" E.	94.16'	651.38'
2348-2346	N. 15°36'03" E.	203.04'	
2346-609	N. 16°16'10" W.	165.38'	
609-608	N. 67°15'53" W.	224.43'	
608-607	N. 78°57'28" W.	337.74'	
607-606	N. 55°26'10" W.	208.87'	
606-605	N. 72°03'28" W.	139.52'	
605-604E	S. 58°11'07" W.	132.68'	
604E-604F	S. 34°49'08" W.	215.57'	
604F-604G	S. 79°48'43" W.	250.06'	
604G-1827	N. 67°59'31" W.	332.69'	
1827-1828	S. 82°13'14" W.	155.03'	
1828-602	N. 79°32'55" W.	137.64'	
602-601	N. 78°55'02" W.	233.83'	
601-223A	N. 75°45'09" W.	71.50'	
223A-4524	N. 13°58'50" W.	262.85'	
4524-38A	N. 4°26'49" W.	289.68'	
38A-38	N. 85°33'11" E.	76.21'	
38-39	N. 50°11'40" E.	156.20'	
39-39A	N. 75°22'45" E.	1,426.18'	
39A-39B	N. 60°15'18" E.	161.24'	
39B-47	N. 47°29'22" W.	325.58'	
47-48	N. 47°01'16" W.	382.10'	
48-49	N. 63°26'06" W.	89.44'	
49-50	N. 66°48'05" W.	152.32'	
50-51	N. 84°48'20" W.	220.91'	
51-52	N. 84°17'22" W.	402.00'	
52-53	N. 67°22'48" W.	260.00'	
53-54	N. 71°33'54" W.	252.98'	
54-55	N. 77°00'19" W.	266.83'	
55-56	N. 45°00'00" W.	113.14'	
56-57	N. 26°33'54" E.	89.44'	
57-58	N. 45°00'00" E.	169.71'	
58-59	N. 16°26'06" E.	189.74'	
59-59A	N. 70°33'56" E.	360.50'	
59A-59B	N. 67°09'59" E.	412.31'	
59B-59C	N. 90°00'00" E.	650.00'	
59C-67A	N. 73°03'29" E.	154.51'	
67A-68	N. 64°55'59" E.	201.00'	
68-69	N. 51°20'25" E.	384.19'	
69-70	N. 63°26'06" E.	178.89'	
70-71	N. 66°02'15" E.	196.98'	
71-72	N. 21°20'25" E.	128.00'	
72-73	N. 42°41'35" E.	297.32'	
73-74	N. 52°33'41" E.	488.02'	
74-75	N. 68°11'55" E.	107.70'	
75-76	N. 87°01'48" E.	141.42'	
76-77	N. 81°52'12" E.	141.42'	
77-78	N. 26°33'54" E.	89.44'	
78-78A	N. 54°27'14" E.	172.05'	
78A-78B	N. 26°05'43" E.	345.62'	
78B-78C	N. 14°55'53" E.	197.59'	
78C-78E	N. 20°56'10" E.	290.14'	
78E-83	N. 19°59'14" E.	157.32'	
83-84	N. 11°18'36" E.	203.96'	
84-85	N. 17°06'10" E.	272.03'	
85-86	N. 26°33'54" E.	268.83'	
86-87	N. 9°27'54" W.	223.11'	
87-88	N. 9°27'54" W.	220.00'	
88-89	N. 0°00'00" E.	120.00'	
89-90	N. 89°54'52" E.	140.36'	
90-91	N. 90°00'00" E.	120.00'	
91-92	N. 28°36'38" E.	125.30'	
92-93	N. 23°57'45" E.	196.98'	
93-94	N. 12°31'44" E.	184.39'	
94-95	N. 7°11'40" E.	220.91'	
95-96	N. 45°00'00" W.	113.14'	
96-97	N. 71°33'54" W.	126.49'	
97-98	N. 33°41'24" W.	144.22'	
98-99	N. 07°00'00" W.	160.00'	
99-100	N. 18°26'06" E.	126.49'	
100-101	N. 23°57'45" E.	196.98'	
101-102	N. 34°49'28" W.	140.09'	
102-103	N. 07°00'00" W.	145.00'	
103-104	N. 11°18'36" W.	203.96'	
104-105	N. 9°27'44" E.	121.66'	
105-106	N. 56°18'36" E.	72.11'	
106-107	N. 82°52'20" E.	161.25'	
107-108	N. 84°48'20" E.	220.91'	
108-109	N. 83°39'35" E.	181.11'	
109-110	N. 68°11'55" E.	107.70'	
110-111	N. 56°18'36" E.	144.22'	
111-112	N. 59°02'19" E.	116.62'	
112-113	N. 66°48'05" E.	152.32'	
113-114	N. 59°02'10" E.	116.62'	
114-115	N. 45°00'00" E.	113.14'	
115-116	N. 11°18'36" E.	203.96'	
116-117	N. 16°41'57" E.	208.81'	
117-118	N. 45°00'00" E.	197.99'	
118-119	N. 60°15'18" E.	161.25'	
119-120	N. 14°02'10" E.	164.92'	
120-121	N. 52°07'30" W.	228.04'	
121-122	N. 30°57'50" W.	233.24'	
122-123	N. 4°05'08" E.	140.36'	
123-124	N. 15°31'27" W.	186.82'	
124-125	N. 26°33'54" E.	178.89'	
125-126	N. 20°33'22" E.	170.88'	
126-127	N. 5°42'38" E.	201.00'	
127-128	N. 18°26'06" E.	126.49'	
128-129	N. 45°00'00" W.	169.71'	
129-130	N. 57°59'41" W.	188.68'	
130-131	N. 73°27'44" W.	281.60'	
131-132	N. 87°07'51" W.	240.19'	
132-133	N. 34°52'31" W.	402.24'	
133-134	N. 54°27'44" W.	172.05'	
134-135	N. 90°00'00" W.	600.00'	
135-136	N. 29°14'45" W.	200.23'	
136-137	N. 59°39'24" W.	237.30'	
137-138	N. 70°16'40" W.	281.51'	
138-139	N. 44°12'55" E.	238.11'	
139-140	N. 45°29'51" E.	676.74'	
140-141	N. 75°22'45" E.	134.35'	
141-142	N. 66°02'15" E.	196.98'	
142-143	N. 82°08'40" E.	292.75'	
143-144	N. 90°00'00" E.	105.00'	
144-145	N. 80°08'03" E.	116.73'	
145-146	N. 63°26'06" E.	89.44'	
146-147	N. 30°57'50" E.	116.62'	
147-154a	N. 30°46'16" E.	698.31'	
154a-154b	N. 00°00'00" W.	71.26'	
154b-155	N. 07°30' W.	161.25'	
155-156	N. 21°43'05" W.	107.70'	
156-157	N. 38°20'35" W.	128.06'	
157-158	N. 14°02'10" W.	226.71'	
158-159	N. 1°51'56" E.	266.06'	
159-160	N. 42°21'27" E.	230.05'	
160-161	N. 32°56'57" E.	312.79'	
161-162	N. 66°02'15" E.	196.98'	
162-163	N. 56°18'36" E.	144.22'	
163-164	N. 29°44'42" E.	161.25'	
164-165	N. 45°00'00" E.	141.42'	
165-166	N. 38°15'16" E.	331.10'	
166-167	N. 51°20'25" E.	224.11'	
167-1	N. 14°02'10" E.	164.92'	



GOLDEN BEAR MUIRFIELD INC.

FRANKLIN COUNTY		DELAWARE COUNTY	
①	D.B. 3252 PG. 189 D.B. 3252 PG. 137 789.365 AC.	D.B. 366 PG. 741 D.B. 366 PG. 749 789.365 AC.	
②	D.B. 3252 PG. 144 180.787 AC.	D.B. 366 PG. 726 180.787 AC.	
③	D.B. 326A PG. 112 D.B. 326A PG. 118 PARCEL A-153.308 AC. PARCEL B-88.548 AC.	D.B. 366 PG. 735 D.B. 366 PG. 728 PARCEL A-153.308 AC. PARCEL B-88.548 AC.	
④	D.B. 3431 PG. 284 PART OF 1536.458 AC.	D.B. 387 PG. 341 PART OF 1536.458 AC.	
⑧		D.B. 367 PG. 646 42.82 AC.	
⑨		D.B. 366 PG. 715 71.639 AC.	
⑩		D.B. 366 PG. 720 15.000 AC.	
⑪		D.B. 366 PG. 724 16.9 AC.	
⑬	D.B. PG.	D.B. PG.	
FRANKLIN COUNTY		DELAWARE COUNTY	
⑤	D.B. 3349 PG. 584 PART OF 1536.458 AC.	D.B. 377 PG. 418 PART OF 1536.458 AC.	
⑥	D.B. 3431 PG. 284 PART OF 220,000 AC.	D.B. 387 PG. 336 PART OF 220,000 AC.	
⑦	D.B. 3388 PG. 385 89.313 AC.		
⑫		D.B. 377 PG. 433 9.487 AC.	
⑬		D.B. 383 PG. 459 2,000 AC.	
⑮	D.B. PG.	D.B. PG.	

MUIRFIELD LTD.

FRANKLIN COUNTY

DELAWARE COUNTY

⑤ D.B. 3349 PG. 584  
PART OF 1536.458 AC.

⑥ D.B. 3431 PG. 284  
PART OF 220,000 AC.

⑦ D.B. 3388 PG. 385  
89.313 AC.

⑫ D.B. 377 PG. 433  
9.487 AC.

⑬ D.B. 383 PG. 459  
2,000 AC.

⑮ D.B. PG.

⑯ D.B. PG.

⑰ D.B. PG.

⑱ D.B. PG.

⑲ D.B. PG.

⑳ D.B. PG.

㉑ D.B. PG.

㉒ D.B. PG.

㉓ D.B. PG.

㉔ D.B. PG.

㉕ D.B. PG.

㉖ D.B. PG.

㉗ D.B. PG.

㉘ D.B. PG.

㉙ D.B. PG.

㉚ D.B. PG.

㉛ D.B. PG.

㉜ D.B. PG.

㉝ D.B. PG.

㉞ D.B. PG.

㉟ D.B. PG.

㊱ D.B. PG.

㊲ D.B. PG.

㊳ D.B. PG.

㊴ D.B. PG.

㊵ D.B. PG.

㊶ D.B. PG.

㊷ D.B. PG.

㊸ D.B. PG.

㊹ D.B. PG.

㊺ D.B. PG.

㊻ D.B. PG.

㊼ D.B. PG.

㊽ D.B. PG.

㊾ D.B. PG.

㊿ D.B. PG.

① D.B. PG.

② D.B. PG.

③ D.B. PG.

④ D.B. PG.

⑥ D.B. PG.

⑧ D.B. PG.

⑨ D.B. PG.

⑪ D.B. PG.

⑬ D.B. PG.

⑭ D.B. PG.

⑯ D.B. PG.

⑰ D.B. PG.

⑱ D.B. PG.

⑲ D.B. PG.

⑳ D.B. PG.

㉑ D.B. PG.

㉒ D.B. PG.

㉓ D.B. PG.

㉔ D.B. PG.

㉕ D.B. PG.

㉖ D.B. PG.

㉗ D.B. PG.

㉘ D.B. PG.

㉙ D.B. PG.

㉚ D.B. PG.

㉛ D.B. PG.

㉜ D.B. PG.

㉝ D.B. PG.

㉞ D.B. PG.

㉟ D.B. PG.

㊱ D.B. PG.

㊲ D.B. PG.

㊳ D.B. PG.

㊴ D.B. PG.

㊵ D.B. PG.

㊶ D.B. PG.

㊷ D.B. PG.

㊸ D.B. PG.

㊹ D.B. PG.

㊺ D.B. PG.

㊻ D.B. PG.

㊼ D.B. PG.

㊽ D.B. PG.

㊾ D.B. PG.

㊿ D.B. PG.

① D.B. PG.

② D.B. PG.

③ D.B. PG.

④ D.B. PG.

⑥ D.B. PG.

⑧ D.B. PG.

⑨ D.B. PG.

⑪ D.B. PG.

⑬ D.B. PG.

⑭ D.B. PG.

⑯ D.B. PG.

⑰ D.B. PG.

⑱ D.B. PG.

⑲ D.B. PG.

⑳ D.B. PG.

㉑ D.B. PG.

㉒ D.B. PG.

㉓ D.B. PG.

㉔ D.B. PG.

㉕ D.B. PG.

㉖ D.B. PG.

㉗ D.B. PG.

㉘ D.B. PG.