

OVERPORT, OHIO

SURVEY BY SAMUEL B. DIETZ

IN N.W. 1/4 SECTION 31, P. 15, P. 20; CONGRESS LANDS
 DON TWP, FRANKLIN Co., O.

SCALE 1" = 100'

APRIL 1957

NORTH
 Stone @ N.W. Co.
 of Section 31

Section 31

0'E 113.68'

ORA CRIST



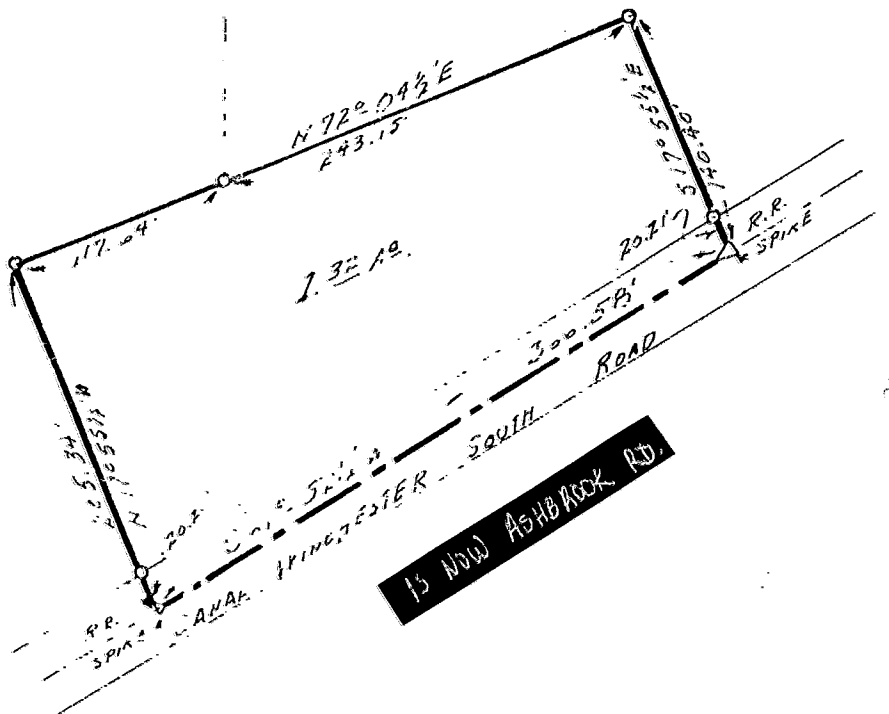
SAMUEL B. DIETZ

1132.70'

549.30' W

Stone

795.15'



We hereby certify the above plot to be correct. Dimensions shown are in feet and decimal parts thereof. Iron pins shown thus —○—

HENDERSON & ASSOCIATES

Louis J. Haines
 Registered Surveyor No. 4379