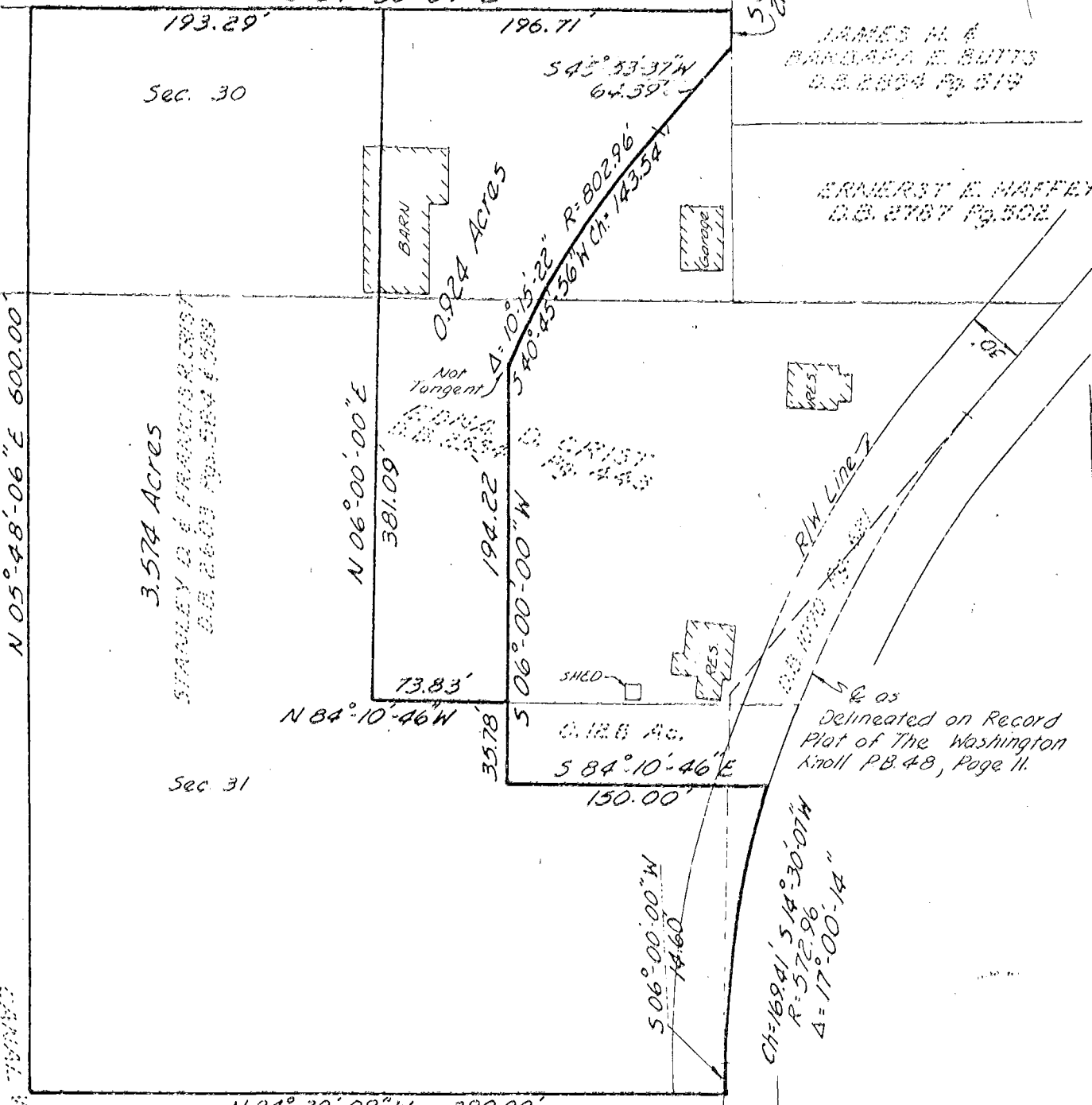


030
0513
1974
0513
RD
M
A
S
H
B
R
O
O
K
R
D
102
076
120
0600

B785675
B710625

CANAL WINCHESTER
BOARD OF EDUCATION
D.B. 1874 Pg. 589



JAMES H. &
BARBARA E. BUTTS
D.B. 2804 Pg. 519

ERNEST E. HOFFER
D.B. 2767 Pg. 502

STANLEY D. & FRANCES R. CRIST
D.B. 2608 Pg. 502 & 503

Sec. 31

N 84° 30' 09" W 390.00'

CANAL WINCHESTER BOARD OF EDUCATION
D.B. 3411 Pg. 773

3.574 Acre and 0.924 Acre Tracts
Part of Section 30 and Section 31
T-15, R-20 Congress Lands
Madison Twp., Village of Canal Winchester, Ohio
for

CANAL WINCHESTER
BOARD OF EDUCATION

Scale 1" = 80'

December, 1974

THE JENNINGS - LAWRENCE CO.
Civil Engineers and Surveyors
55 Buttes Avenue
Columbus 15, Ohio

Revised 3-19-75

By *Foy T. Underwood*
Registered Surveyor

MADISON TWP.
0-51-C