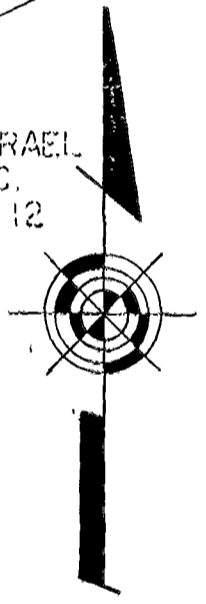
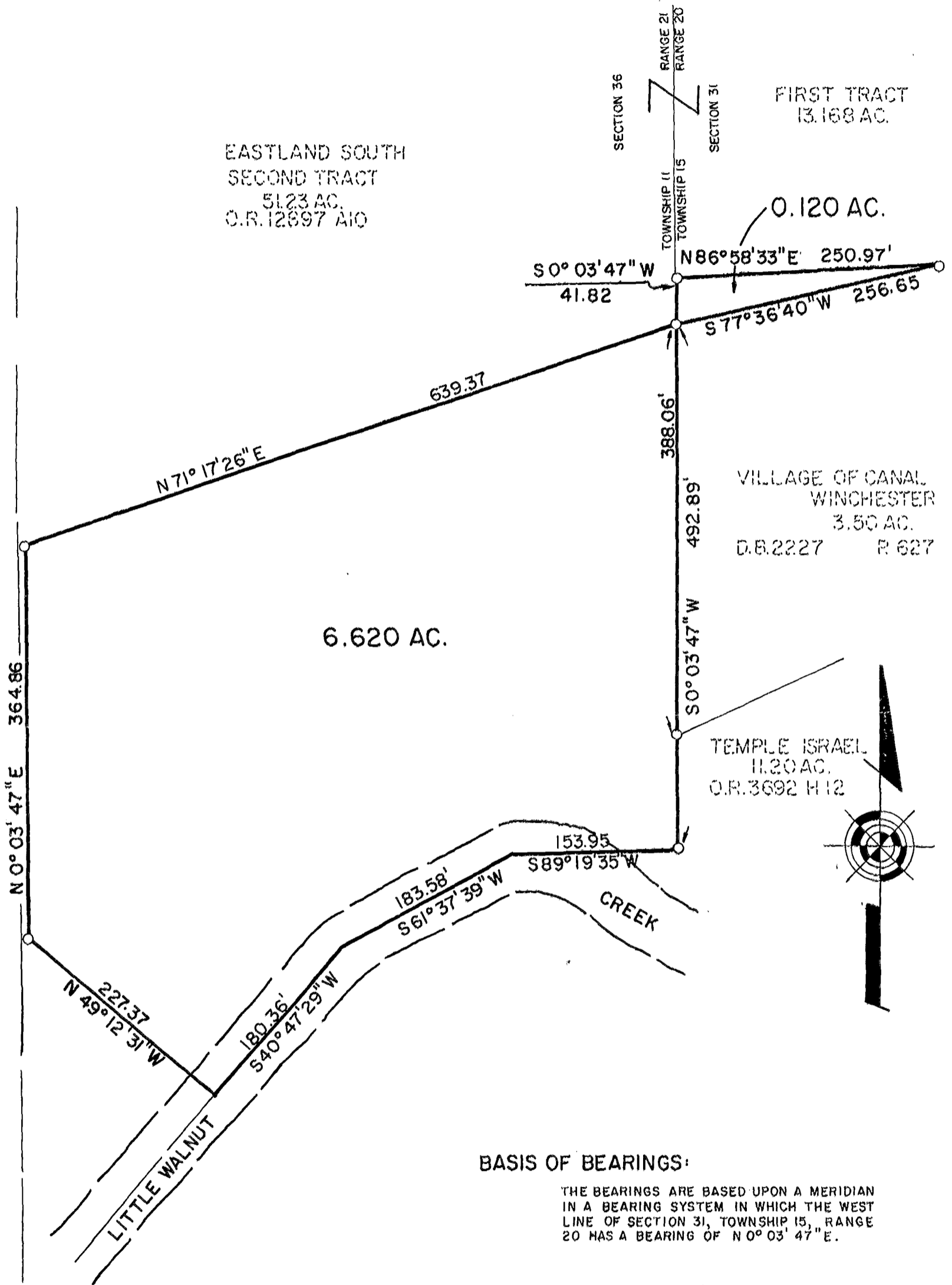


**SURVEY OF ACREAGE PARCELS**  
 LOCATED IN  
 SECTION 36, TOWNSHIP 11, RANGE 21 & SECTION 31, TOWNSHIP 15, RANGE 20  
 CONGRESS LANDS  
 VILLAGE OF CANAL WINCHESTER, FRANKLIN COUNTY, OHIO

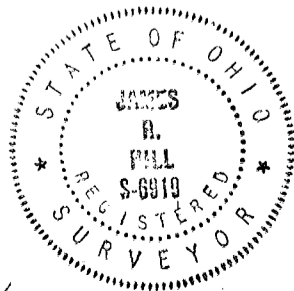
SCALE 1" = 100'

RECORD REFERENCES \_\_\_\_\_



**BASIS OF BEARINGS:**

THE BEARINGS ARE BASED UPON A MERIDIAN IN A BEARING SYSTEM IN WHICH THE WEST LINE OF SECTION 31, TOWNSHIP 15, RANGE 20 HAS A BEARING OF N 0° 03' 47" E.

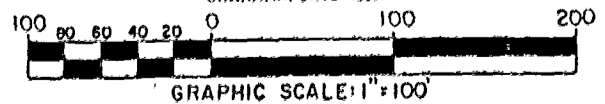


SURVEYED & PLATTED

BY



CONSULTING ENGINEERS & SURVEYORS  
 GAHANNA, OHIO 43230



By James R. Hill Professional Surveyor No. 6919 Date 11/14/90