

87606650

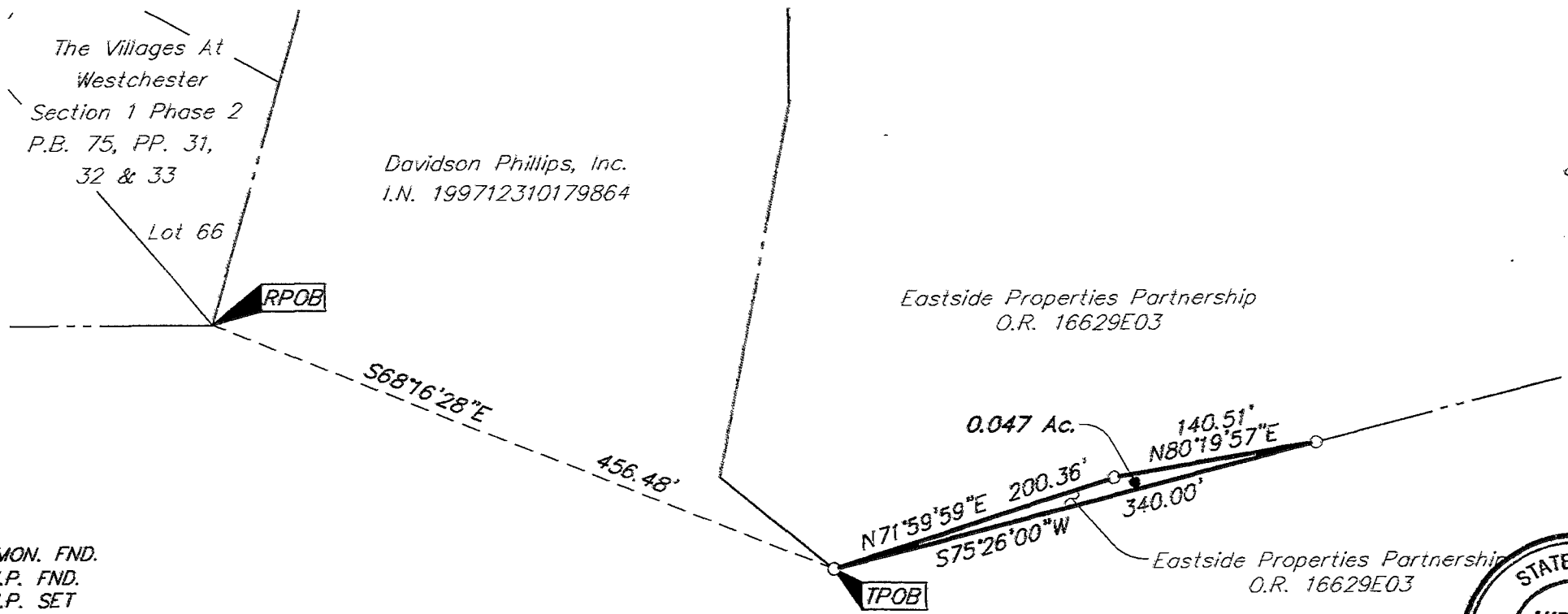
D-51-B
MADISON TWP



SURVEY OF ACREAGE PARCEL
LOCATED IN
SECTION 36, TOWNSHIP 11, RANGE 21
CONGRESS LANDS
VILLAGE OF CANAL WINCHESTER, FRANKLIN COUNTY, OHIO

SCALE 1" = 100'

JULY 16, 2002



- = MON. FND.
- = I.P. FND.
- = I.P. SET
- = MAG. NAIL FND.
- = MAG. NAIL SET
- ▲ = R.R. SPK. FND.
- △ = R.R. SPK. SET
- ◆ = P.K. NAIL FND.

I.P.S Set are 13/16" I.D. Iron pipe W/ cap inscribed EMHT INC



GRAPHIC SCALE (IN FEET)

BASIS OF BEARINGS: Bearings are based on the same meridian as the metes and bounds description of the 501.561 acre tract of land in Official Record 16629E03, Recorder's Office, Franklin County, Ohio.

Davidson Phillips, Inc.
I.N. 199712310179864



By Matthew A Kirk
Professional Surveyor No. 7865