



# SURVEY OF ACREAGE PARCEL

LOCATED IN

SECTION 25, TOWNSHIP 11, RANGE 21

CONGRESS LANDS

VILLAGE OF CANAL WINCHESTER, FRANKLIN COUNTY, OHIO

SCALE 1" = 100'

AUGUST 24, 2000

- = I.P. FND.
- = I.P. SET
- = MAG. NAIL FND.
- = MAG. NAIL SET
- ▲ = R.R. SPK. FND.
- △ = R.R. SPK. SET
- = P.K. NAIL FND.

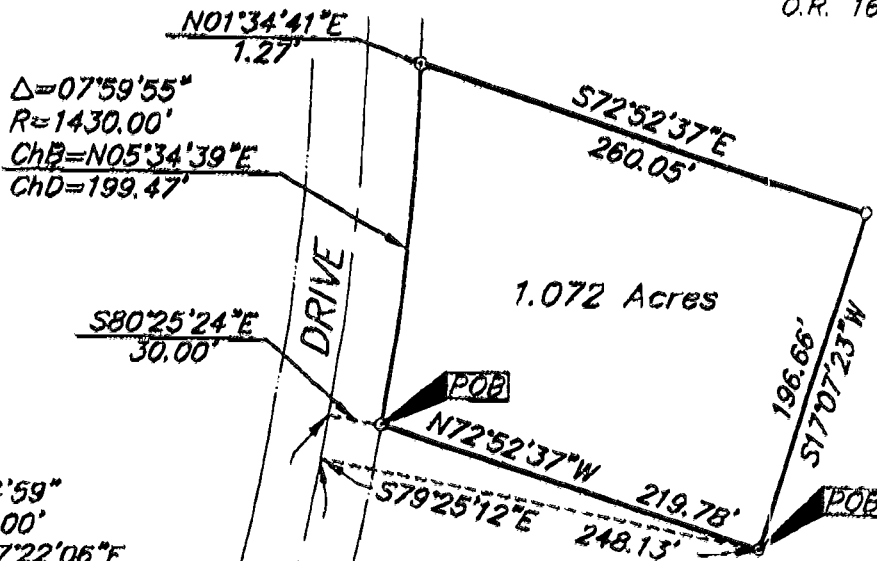
I.P.S Set are 13/16" I.D. Iron pipe W/ cap inscribed EMH&T.

The Basis of Bearing for this drawing is North 64° 50' 25" West for the centerline of a portion of Cormorant Drive, of record in Plat Book 90, Pages 54 and 55, Recorder's Office, Franklin County, Ohio



GRAPHIC SCALE (IN FEET)

Eastside Properties Partnership  
O.R. 16629E03



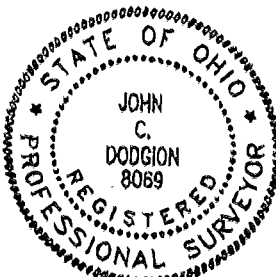
Eastside Properties Partnership  
O.R. 16629E03

Δ=14°34'47"  
R=1400.00'  
ChB=N17°52'12"E  
ChD=355.29'

THRUSH DRIVE  
R/W

CORMORANT DRIVE  
R/W

Reserve "B"  
The Villages at Winchester  
Section 6  
P.B. 90, Pgs. 54 & 55



E.M.H.&T. INC.

by *J.C. Dodgion* 8/24/00  
Professional Surveyor No. 8069

87606700

C-46-E