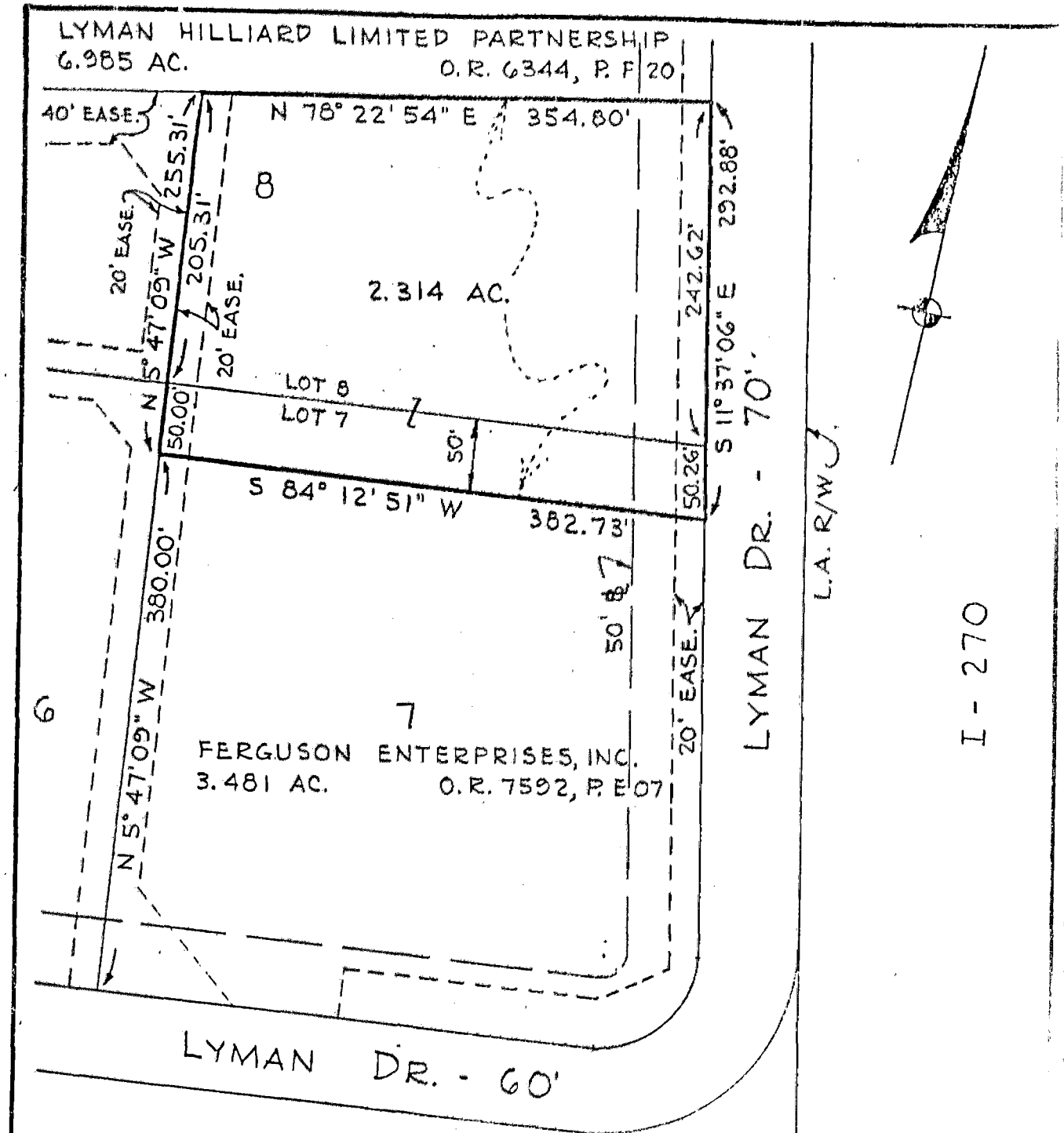


N-42-GGG



BASIS OF BEARINGS = PLAT

PLAT OF 2.314 AC. OUT OF LOTS 7 & 8, LYMAN INDUSTRIAL PARK (P.B. 63, P. 35 & 36), HILLIARD, OH. FOR LYMAN INDUSTRIAL PARK, INC.

SCALE: 1" = 100'

C.F. BIRD & R.J. BULL, LTD.
2875 W. DUBLIN-GRANVILLE RD.
WORTHINGTON, OHIO

JULY 11, 1986
ADDED EASE - OCT. 3, 1986
Richard J. Bull

#4723
82-395

179107425
N-42-GGG