

**SURVEY OF ACREAGE PARCEL**  
 LOCATED IN QUARTER TOWNSHIP 4, TOWNSHIP 2, RANGE 17,  
 CITY OF COLUMBUS, FRANKLIN COUNTY, OHIO

SCALE 1" = 60'

JULY 20, 1990

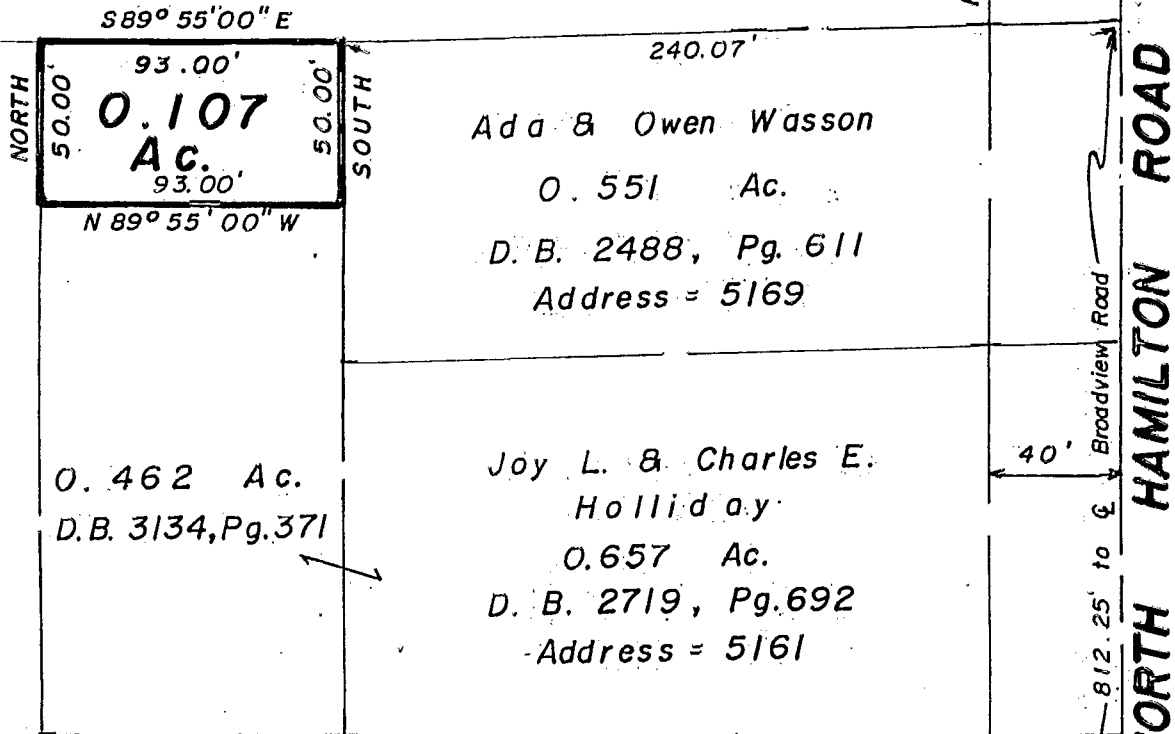
RECORD REFERENCES



GRAPHIC SCALE: 1" = 60'

Thomas H. Lurie  
 29.978 Ac.  
 D. B. 3683, Pg. 111

86607500



Woodland Manor Nursing Homes Inc.  
 5.773 Ac.  
 O.R. 13709112



FRANKLIN COUNTY SURVEY MONUMENTS

**NOTES:**

The bearings shown hereon are based on the same meridian as bearings in deed of record in D.B. 3134, Pg. 371.

We hereby declare that the foregoing plat was prepared from an actual survey of the premises and shows the location of the boundary and improvements, and that there are no encroachments either way across the boundary of this lot except as shown hereon.

**E.M.H.&T. INC.**

By Thomas D. Sibbald  
 Professional Surveyor No. 5908

Col. WESTERVILLE

9-4-00