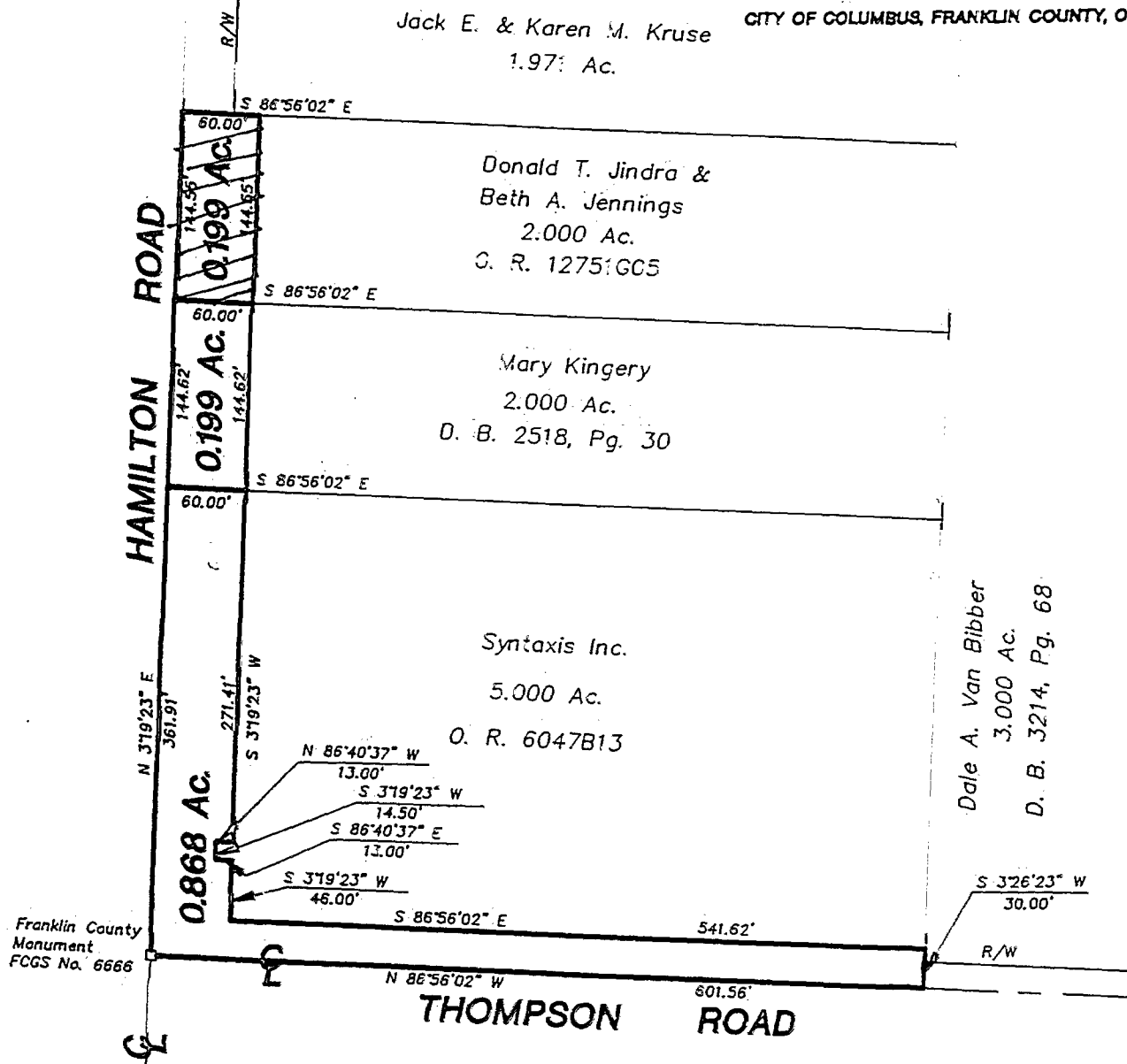


SURVEY OF ACREAGE PARCELS
 LOCATED IN QUARTER TOWNSHIP 3, TOWNSHIP 2, RANGE 16,

UNITED STATES MILITARY LANDS

Jack E. & Karen M. Kruse
 1.97 Ac.
 CITY OF COLUMBUS, FRANKLIN COUNTY, OHIO

0-75-D
 Jmdia



NOTE:

The bearings shown hereon are based on the Ohio State Plane Coordinate System as per NAD83. Control for bearings was from coordinates of monuments established by the Franklin County Engineering Department, using Global Positioning System procedures and equipment.

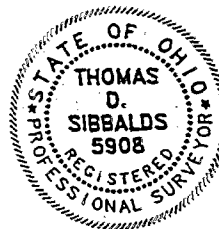
Surveyed & Platted
 By

EVANS, MECHWART, HAMBLETON, & TILTON INC.
 CONSULTING ENGINEERS AND SURVEYORS
 170 MILL STREET
 GAHANNA, OHIO 43230
 614/471-5150

By Thomas D. Sibbalds
 Thomas D. Sibbalds
 Registered Surveyor No. 5908

SCALE 1" = 100'

SEPTEMBER 7, 1994



GRAPHIC SCALE 1" = 100'

188607525
 188607500