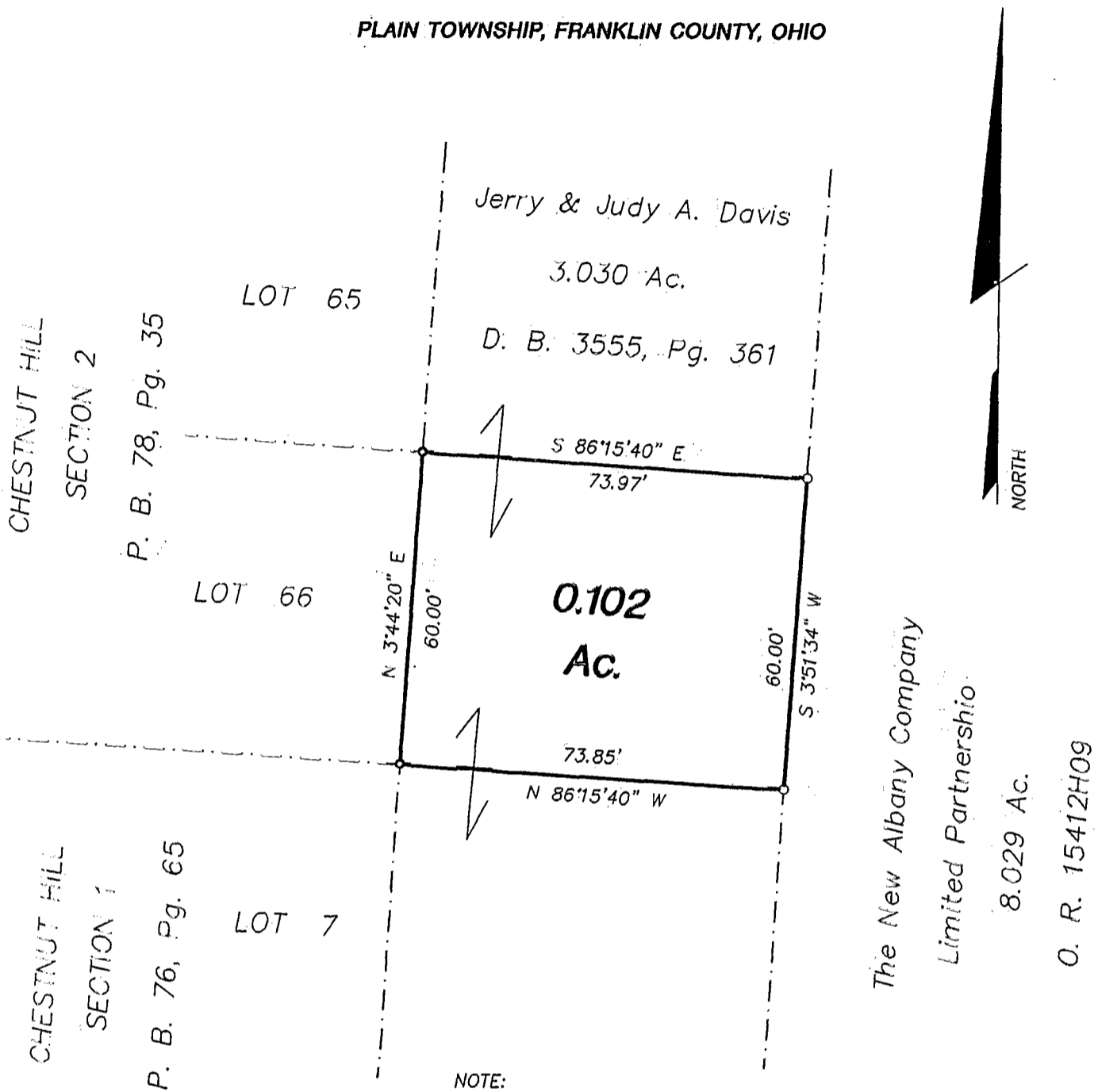


SURVEY OF ACREAGE PARCEL
LOCATED IN QUARTER TOWNSHIP 3, TOWNSHIP 2, RANGE 16,
UNITED STATES MILITARY LANDS
PLAIN TOWNSHIP, FRANKLIN COUNTY, OHIO



NOTE:

The bearings shown hereon are based on the same meridian as the bearing of the easterly line of "CHESTNUT HILL SECTION 2", (N 3°44'20" E) of record in Plat Book 78, Page 35.

Surveyed & Platted
 By

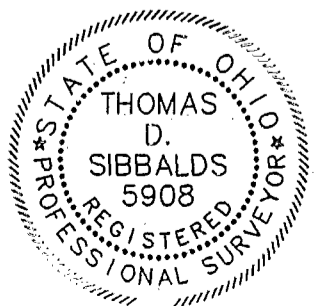
EVANS, MECHWART, HAMBLETON, & TILTON INC.
 CONSULTING ENGINEERS AND SURVEYORS
 170 MILL STREET
 GAHANNA, OHIO 43230
 614/471-5150

- I.P. Fnd.
- I.P. Set

By Thomas D. Sibbalds
 Thomas D. Sibbalds
 Registered Surveyor No. 5908

SCALE 1" = 30'

AUGUST 26, 1997



GRAPHIC SCALE 1" = 30'

86 857 500
 005 658 978