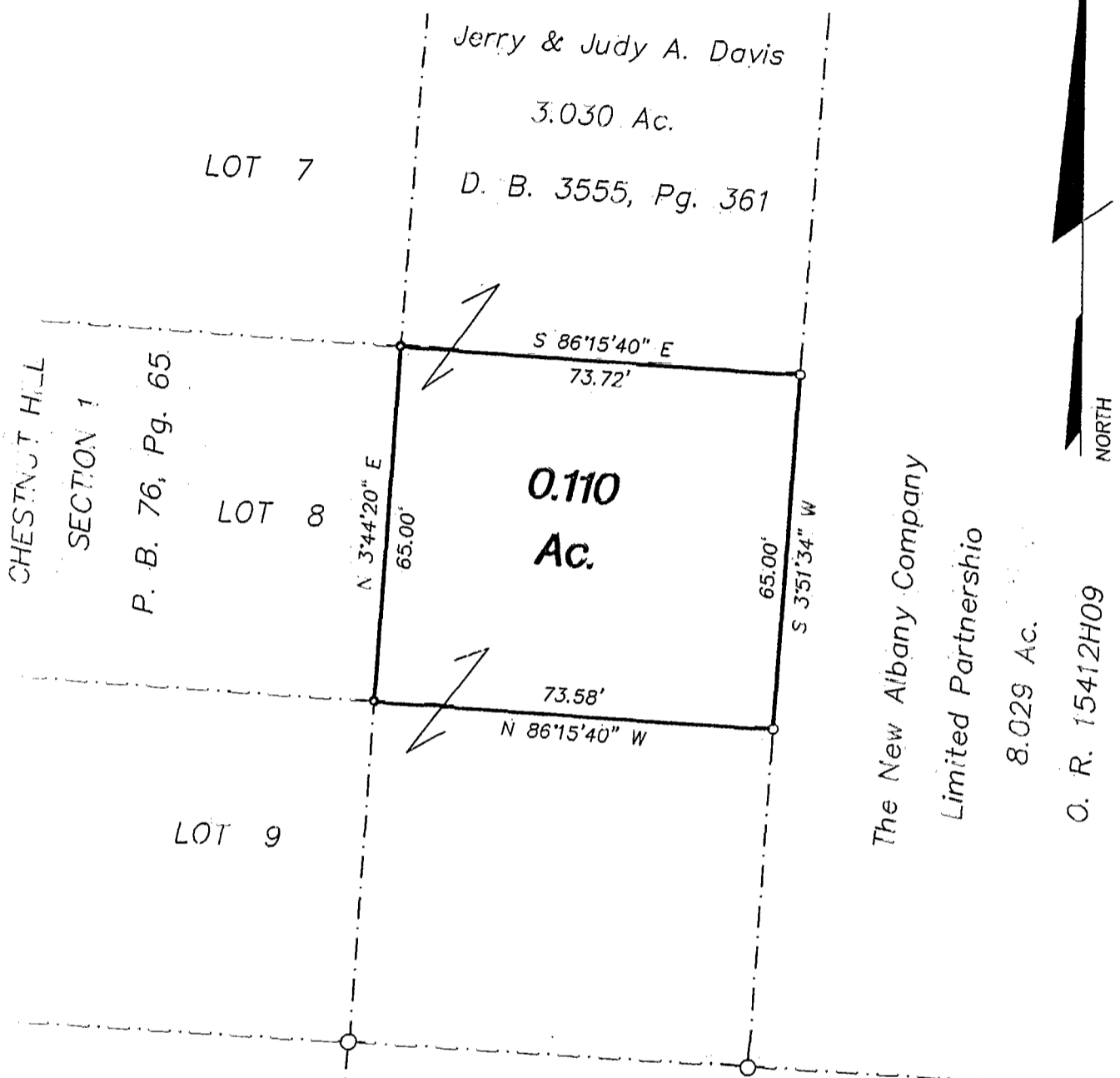


SURVEY OF ACREAGE PARCEL

LOCATED IN QUARTER TOWNSHIP 3, TOWNSHIP 2, RANGE 16,

UNITED STATES MILITARY LANDS

PLAIN TOWNSHIP, FRANKLIN COUNTY, OHIO



NOTE:

The bearings shown hereon are based on the same meridian as the bearing of the easterly line of "CHESTNUT HILL SECTION 2", (N 3°44'20" E) of record in Plat Book 78, Page 35.

Surveyed & Platted
By

EVANS, MECHWART, HAMBLETON, & TILTON INC.

CONSULTING ENGINEERS AND SURVEYORS

170 MILL STREET

GAHANNA, OHIO 43230

614/471-5150

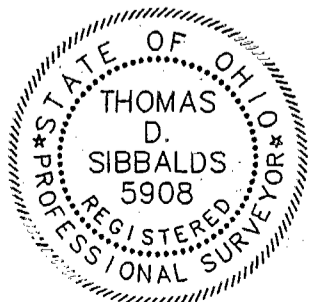
- = I.P. Fnd.
- = I.P. Set

By Thomas D. Sibbalds

Thomas D. Sibbalds
Registered Surveyor No. 5908

SCALE 1" = 30'

AUGUST 26, 1997



GRAPHIC SCALE 1" = 30'

86 857 500