

SURVEY OF ACREAGE PARCEL

LOCATED IN QUARTER TOWNSHIP 3, TOWNSHIP 2, RANGE 16,

UNITED STATES MILITARY LANDS

PLAIN TOWNSHIP, FRANKLIN COUNTY, OHIO

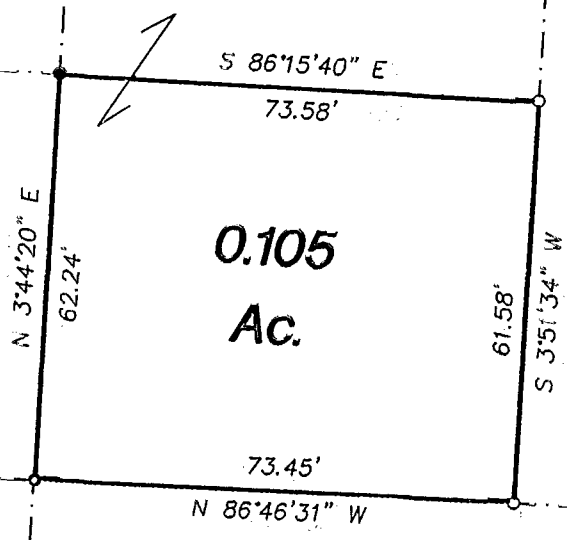
CHESTNUT HILL
SECTION 1

LOT 8
P. B. 76, Pg. 65
LOT 9

Jerry & Judy A. Davis

3.030 Ac.

D. B. 3555, Pg. 361



The New Albany Company
Limited Partnership
8.029 Ac.
O. R. 15412H09

The New Albany Company
6.848 Ac.
O. R. 14545I02

NOTE:

The bearings shown hereon are based on the same meridian as the bearing of the easterly line of "CHESTNUT HILL SECTION 2", (N 3°44'20" E) of record in Plat Book 78, Page 35.

Surveyed & Platted.

By

EVANS, MECHWART, HAMBLETON, & TILTON INC.

CONSULTING ENGINEERS AND SURVEYORS

170 MILL STREET

GAHANNA, OHIO 43230

614/471-5150

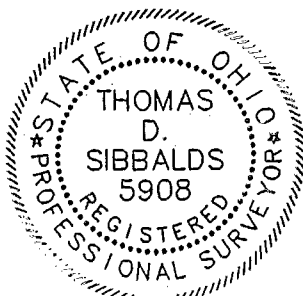
- = I.P. Fnd.
- = I.P. Set

By Thomas D. Sibbalds

Thomas D. Sibbalds
Registered Surveyor. No. 5908

SCALE 1" = 30'

AUGUST 26, 1997



GRAPHIC SCALE 1" = 30'

005 158 98