

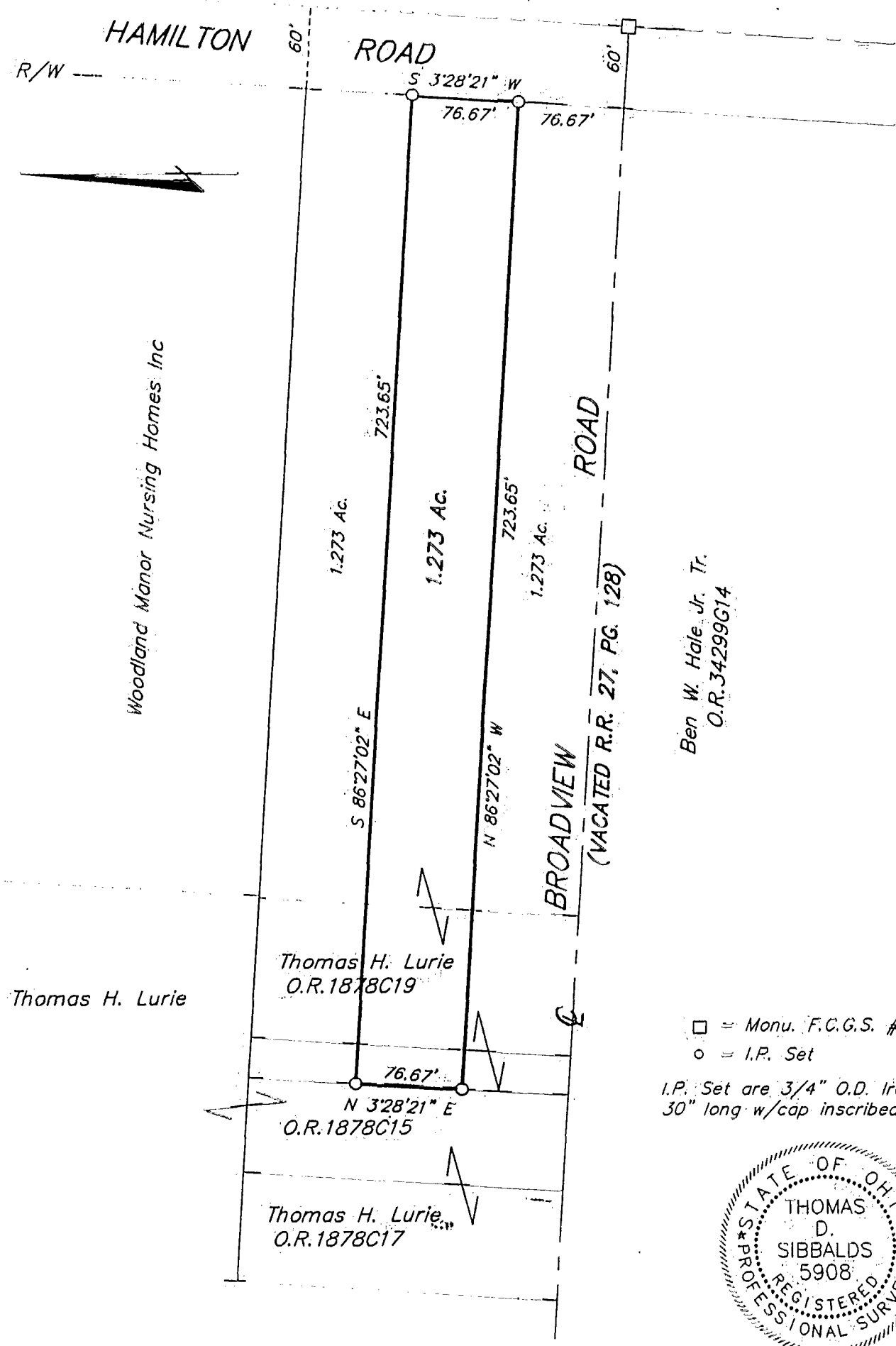
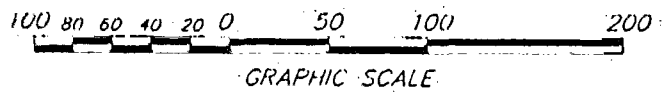
0-42
 BLEX DASH
 T.V.
 INC.
 CONSULTING ENGINEERS & SURVEYORS
 VAND. WEEHART, HARRINGTON & TILTON, INC.

SURVEY OF 1.273 ACRE TRACT
 LOCATED IN
Quarter Township 4, Township 2, Range 17
United States Military Lands
 City of Columbus, Franklin County, Ohio

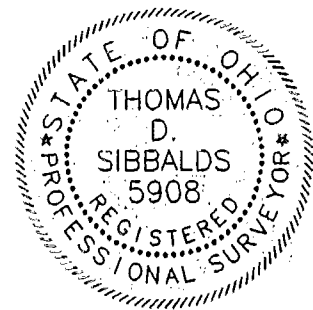
Scale: 1" = 100'

December 15, 2000

Record References:



□ = Monu. F.C.G.S. #6671
 ○ = I.P. Set
 I.P. Set are 3/4" O.D. Iron Pin
 30" long w/cap inscribed EMH&T.



BASIS OF BEARINGS:

The bearings contained herein are based on the same meridian as the bearing of the centerline of Hamilton Road (South 03°28'21" West) established between Franklin County Monuments Franklin County Geodetic Survey No. 6666 and Franklin County Geodetic Survey No. 6671.

E.M.H.&T. INC.

By Thomas D. Sibbalds
 Registered Surveyor No. 5908

86607500