

SURVEY OF ACREAGE PARCEL
 LOT 17 QTR TWP 4 TWP 2 RNG 17 USML
 CITY OF COLUMBUS, FRANKLIN COUNTY, OHIO

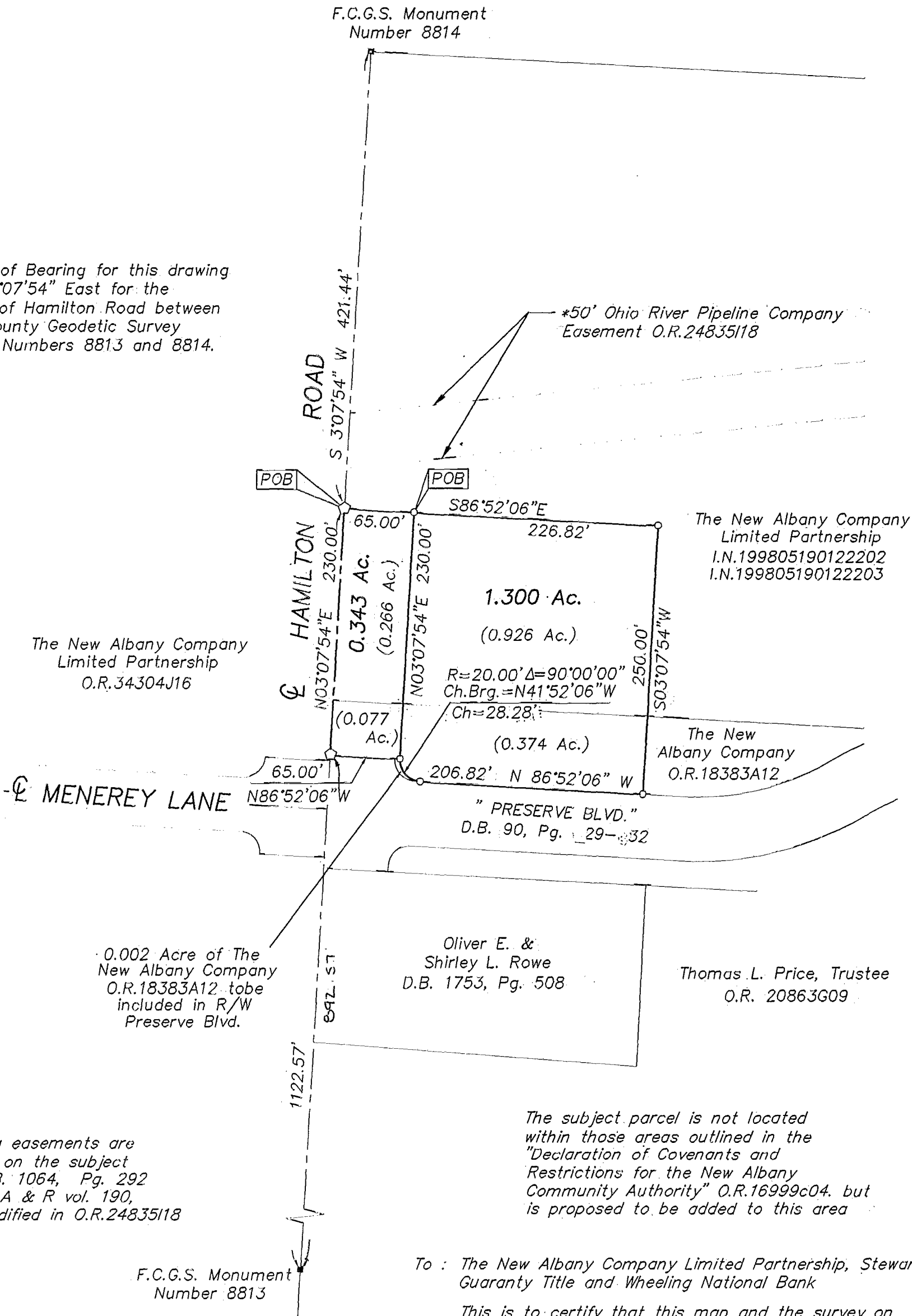
SCALE 1" = 100'

DECEMBER 8, 1998



The Basis of Bearing for this drawing is North 3°07'54" East for the centerline of Hamilton Road between Franklin County Geodetic Survey Monument Numbers 8813 and 8814.

F.C.G.S. Monument
 Number 8814



The following easements are not located on the subject parcel: D.B. 1064, Pg. 292 assigned in A & R vol. 190, Pg. 451 modified in O.R.24835118

The subject parcel is not located within those areas outlined in the "Declaration of Covenants and Restrictions for the New Albany Community Authority" O.R.16999c04. but is proposed to be added to this area

To : The New Albany Company Limited Partnership, Stewart Guaranty Title and Wheeling National Bank

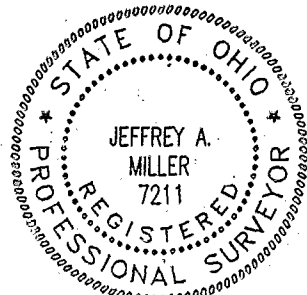
This is to certify that this map and the survey on which it is based were made in accordance with "Minimum Standard Detail Requirements for ALTA/ACSM Land Title Surveys", jointly established and adopted by ALTA and ACSM in 1997.

- = P.K. NAIL SET
- ▲ = R.R. SPK. FND.
- △ = R.R. SPK. SET
- = I.P. FND.
- = I.P. SET

I.P.S. Set are 13/16" I.D. Iron pipe W/ cap inscribed EMH&T.



GRAPHIC SCALE (IN FEET)



E.M.H.&T. INC.

By *[Signature]*
 Professional Surveyor No. 7211