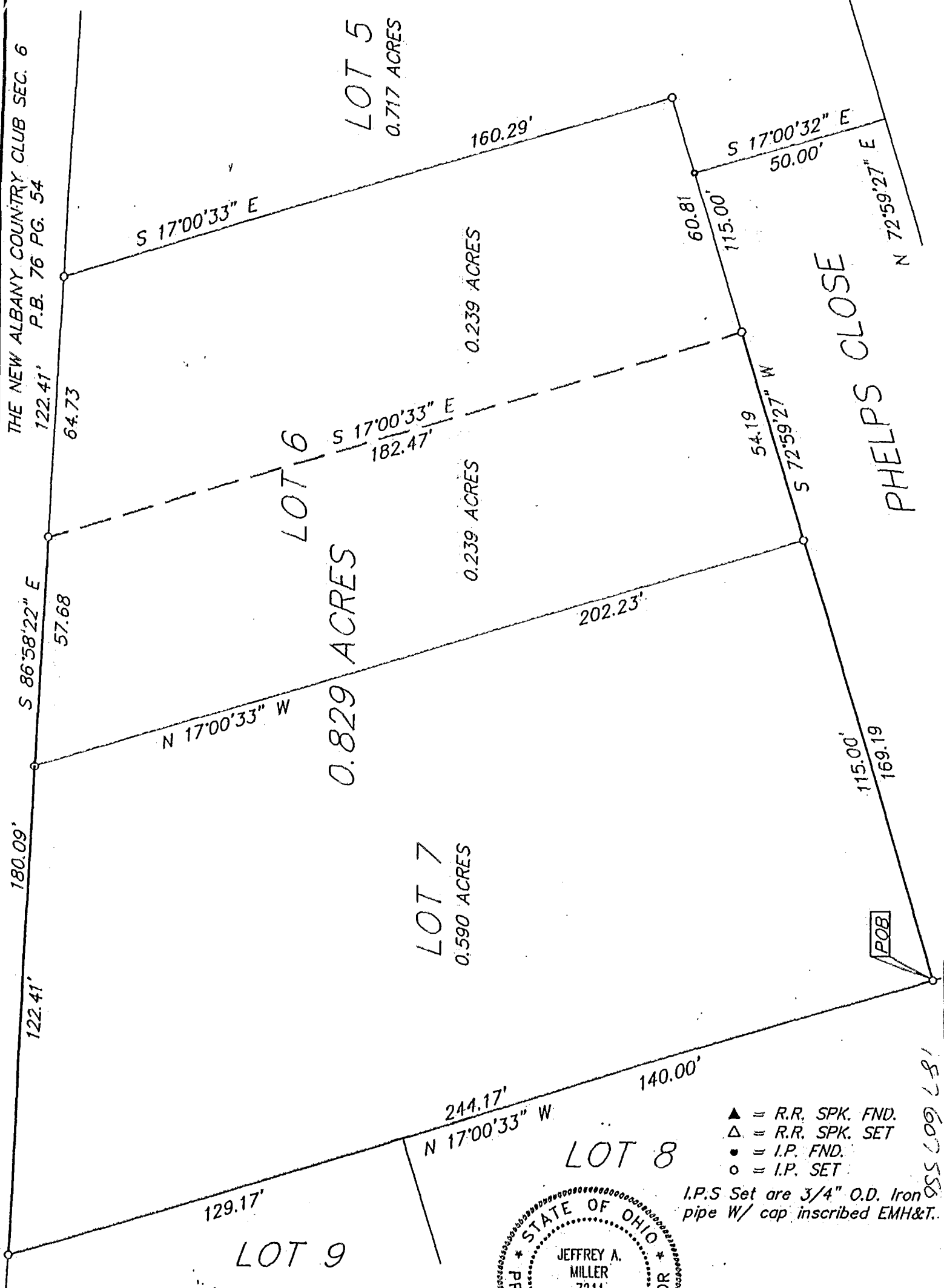


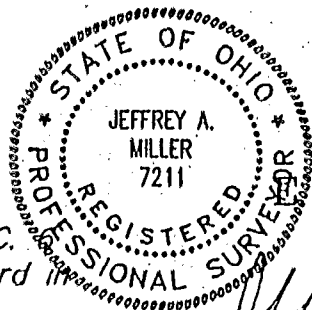
SCALE 1" = 30'

MAY 25, 1995

RECORD REFERENCES PB PG



- ▲ = R.R. SPK. FND.
 - △ = R.R. SPK. SET
 - = I.P. FND.
 - = I.P. SET
- I.P.S. Set are 3/4" O.D. Iron pipe w/ cap inscribed EMH&T.



M.H.&T. INC.

The Basis of Bearing for this description is the North line of NEW ALBANY COUNTRY CLUB SEC. as being South 86°58'22" East, as shown of record in Plat Book 76, Page 54, Recorder's Office, Franklin County, Ohio.

Jeffrey A. Miller 5-26-98
 Professional Surveyor No. 7211

187607556
 22AIN
 N-52-66