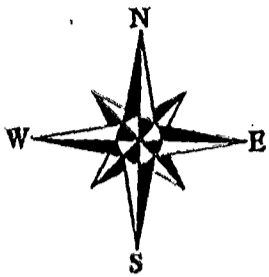




RESUBDIVISION OF LOTS 12, 13, 14, 15, 16 & 17
 THE NEW ALBANY COUNTRY CLUB
 SECTION 6
 VILLAGE OF NEW ALBANY, FRANKLIN COUNTY, OHIO

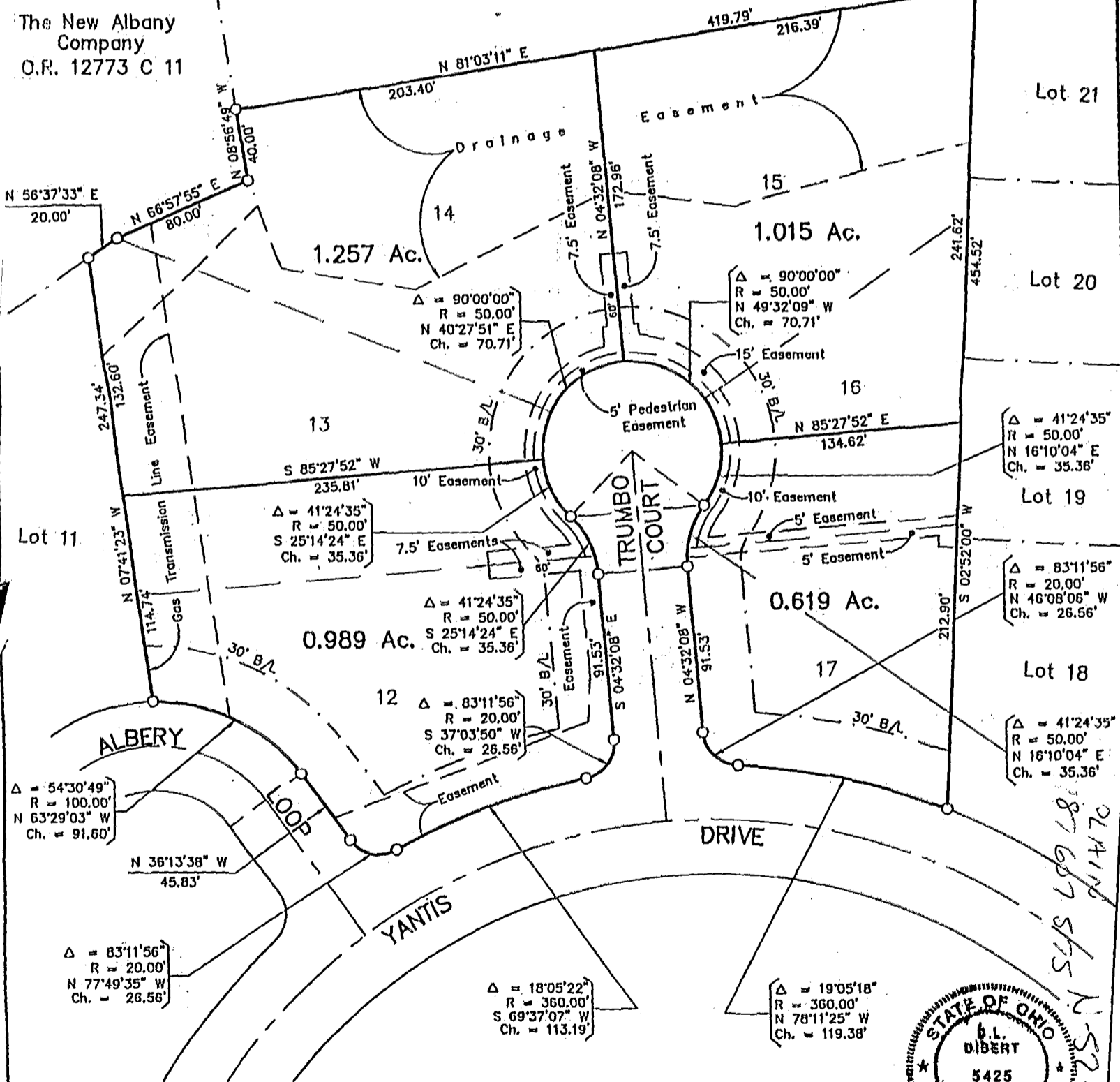
SEPTEMBER 30, 1994

RECORD REFERENCES P.B. 76, Pgs. 54-57

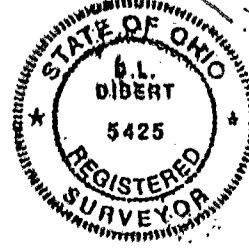


The New Albany Company
 O.R. 17175 E 08

The New Albany Company
 O.R. 12773 C 11



BASIS OF BEARINGS : The bearings shown on this plat are based on the Ohio State Plane Coordinate System as per NAD83, as shown on the recorded plat of The New Albany Country Club Section 6, of record in Plat Book 76, Pages 54-57.



E.M.H.&T. INC.

By *Donald R. Dibert*
 Professional Surveyor No. 5425

DRAIN
 545 699 545
 N 52-66
 7-14-70