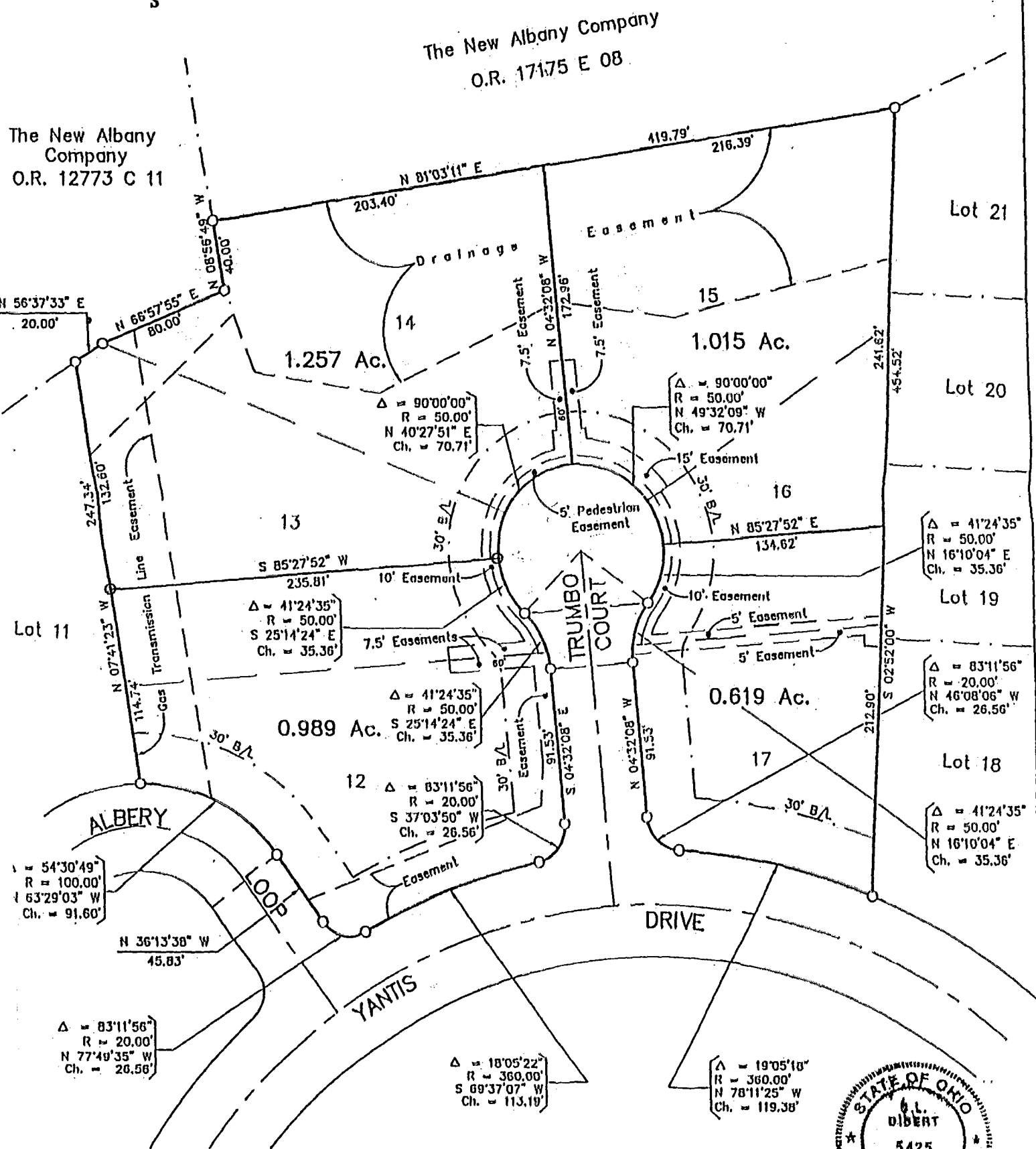
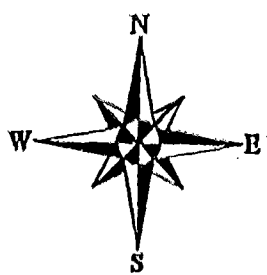


RESDIVISION OF LOTS 12, 13, 14, 15, 16 & 17
THE NEW ALBANY COUNTRY CLUB
SECTION 6
VILLAGE OF NEW ALBANY, FRANKLIN COUNTY, OHIO

SCALE 1" = 60' IRON PIN SEPTEMBER 30, 1994 RECORD REFERENCES P.B. 76, Pgs. 54-57



BASIS OF BEARINGS : The bearings shown on this plat are based on the Ohio State Plane Coordinate System as per NAD83, as shown on the recorded plat of The New Albany Country Club Section 6, of record in Plat Book 76, Pages 54-57.



E.M.H.&T. INC.

By Donald R. Albert
Professional Surveyor No. 5425

PLAT 87 607 575