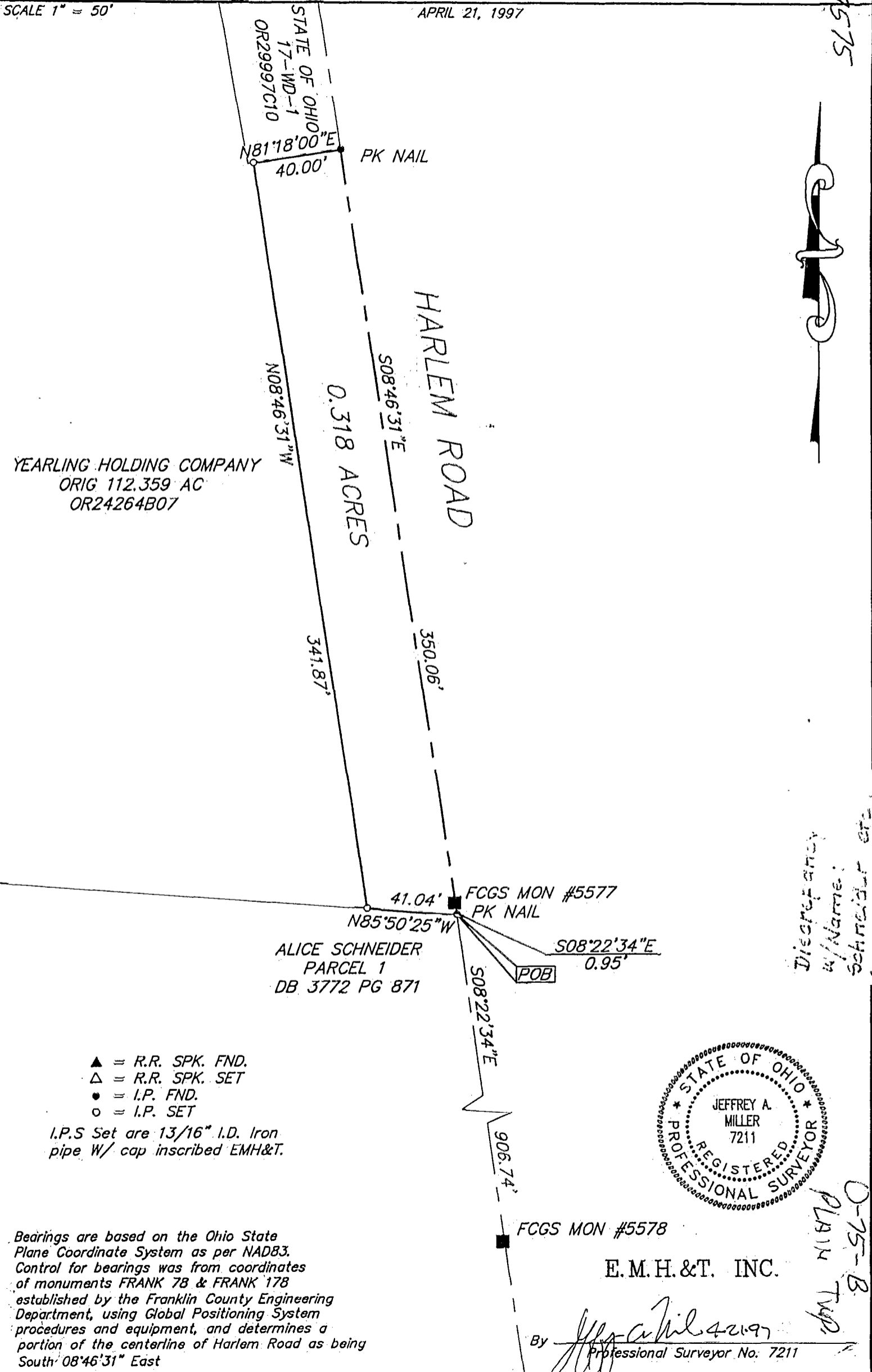


*split*  
 8735-7575

SCALE 1" = 50'

APRIL 21, 1997



STATE OF OHIO  
 17-WD-1  
 OR29997C10

N81°18'00"E  
 40.00' PK NAIL

N08°46'31"W  
 0.318 ACRES  
 508.46'31"E

YEARLING HOLDING COMPANY  
 ORIG 112.359 AC  
 OR24264B07

341.87'  
 350.06'

41.04' FCGS MON #5577  
 PK NAIL

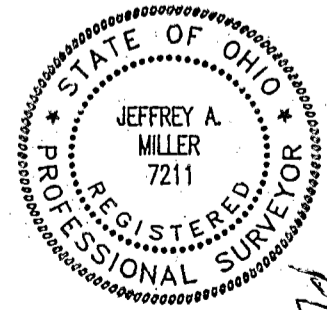
N85°50'25"W  
 ALICE SCHNEIDER  
 PARCEL 1  
 DB 3772 PG 871

S08°22'34"E  
 0.95'

S08°22'34"E

906.74'

FCGS MON #5578



E.M.H. & T. INC.

By *Jeffrey A. Miller* 4/21/97  
 Professional Surveyor No. 7211

*Discrepancy  
 found  
 w/Name  
 of  
 Schmeider*

*0-75-B  
 PLAIN  
 TWP.*

Bearings are based on the Ohio State Plane Coordinate System as per NAD83. Control for bearings was from coordinates of monuments FRANK 78 & FRANK 178 established by the Franklin County Engineering Department, using Global Positioning System procedures and equipment, and determines a portion of the centerline of Harlem Road as being South 08°46'31" East