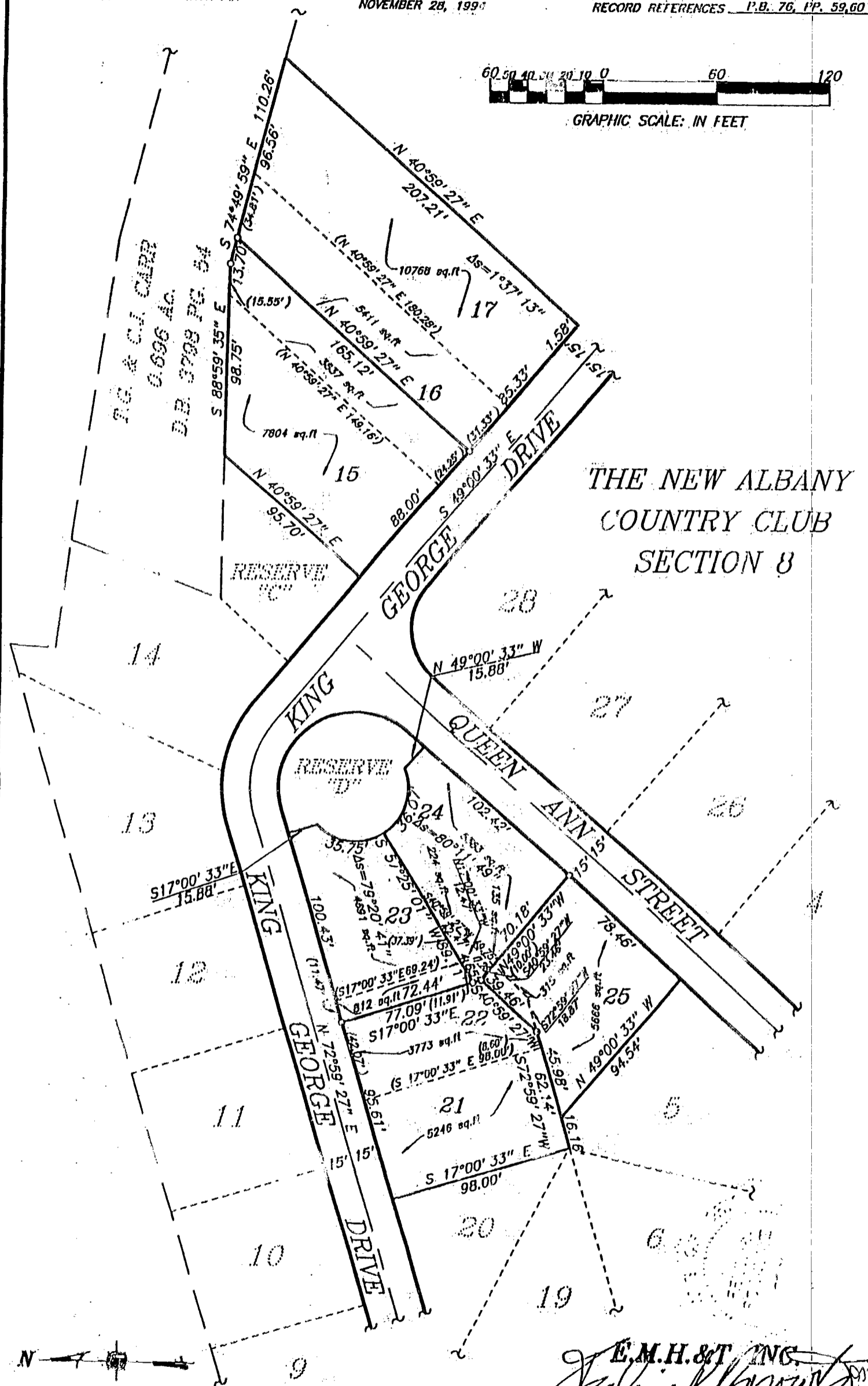
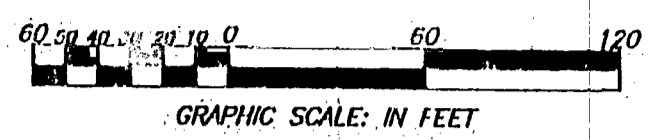


E.M.H. & T. INC.
 CONSULTING ENGINEERS & SURVEYORS
 GAHANNA, OHIO 43230

SURVEY OF PROPOSED LOT SPLITS
 LOTS 15-17 AND 21-25
 THE NEW ALBANY COUNTRY CLUB SECTION 8
 QUARTER TOWNSHIP 3, TOWNSHIP 2, RANGE 16
 UNITED STATES MILITARY LANDS
 VILLAGE OF NEW ALBANY, COUNTY OF FRANKLIN, STATE OF OHIO

SCALE 1" = 60' IRON PIN NOVEMBER 28, 1994 RECORD REFERENCES P.B. 76, PP. 59, 60



THE NEW ALBANY
 COUNTRY CLUB
 SECTION 8

E.M.H. & T. INC.
 by *J. K. Knowlton*
 Professional Surveyor No. 45417

The bearings in the foregoing description are based on the same meridian as the bearings shown on said recorded plat of The New Albany Country Club Section 8.

As of November 28, 1994, the iron pins described as "set" in the foregoing description have not been set in the field at the corners indicated.

PLAIN 87 607 550
 87 857 550