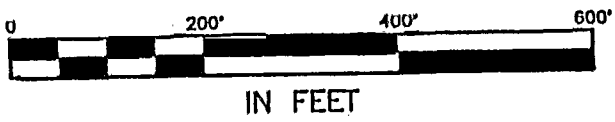


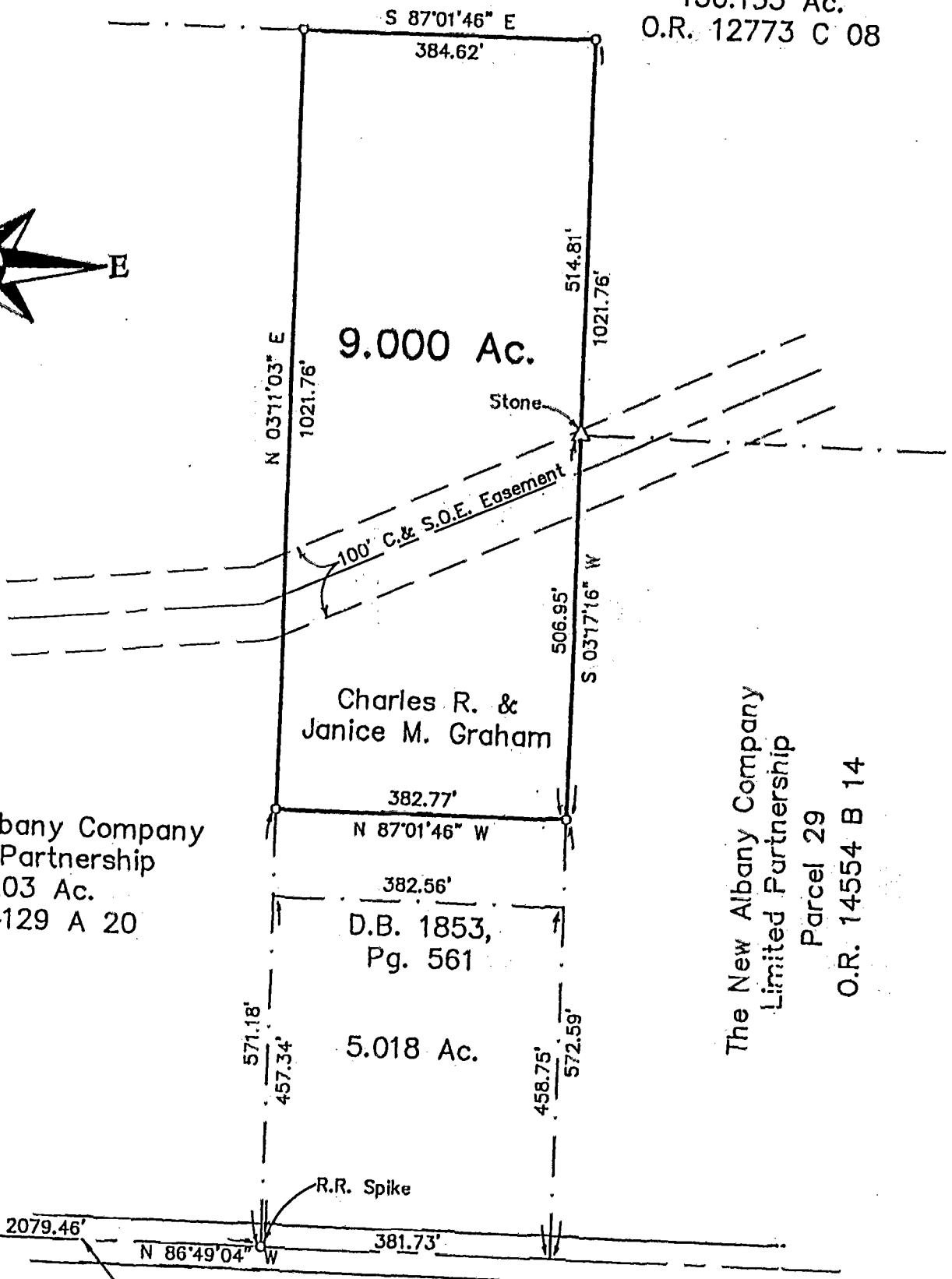
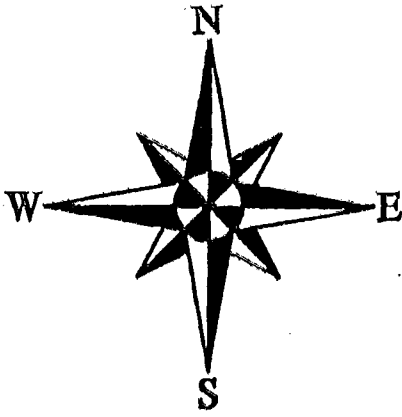


SURVEY OF 9.000 ACRE TRACT
 LOCATED IN
 QUARTER TOWNSHIP 3, TOWNSHIP 2, RANGE 16
 UNITED STATES MILITARY LANDS
 PLAIN TOWNSHIP, FRANKLIN COUNTY, OHIO

1" = 200' JULY 11, 1994 IRON PIN RECORD REFERENCES D.B. 1853, Pg. 561
 REVISED AUGUST 5, 1994



The New Albany Company
 Limited Partnership
 130.155 Ac.
 O.R. 12773 C 08



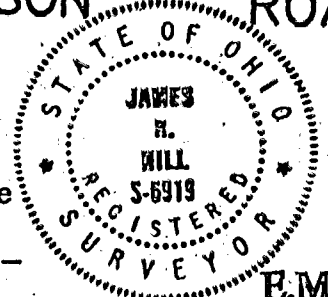
Charles R. &
 Janice M. Graham

9.000 Ac.

The New Albany Company
 Limited Partnership
 12.203 Ac.
 O.R. 14129 A 20

The New Albany Company
 Limited Partnership
 Parcel 29
 O.R. 14554 B 14

THOMPSON ROAD



BASIS OF BEARINGS : Bearings are based on the Ohio State Plane Coordinate System as per NAD83. Control for bearings was from coordinates of monuments Number Frank 69 and 169 established by the Franklin County Engineering Department, using Global Positioning System procedures and equipment.

E.M.H.&T. INC.
 By *James R. Hill*
 Professional Surveyor No. 6919

0-75-D