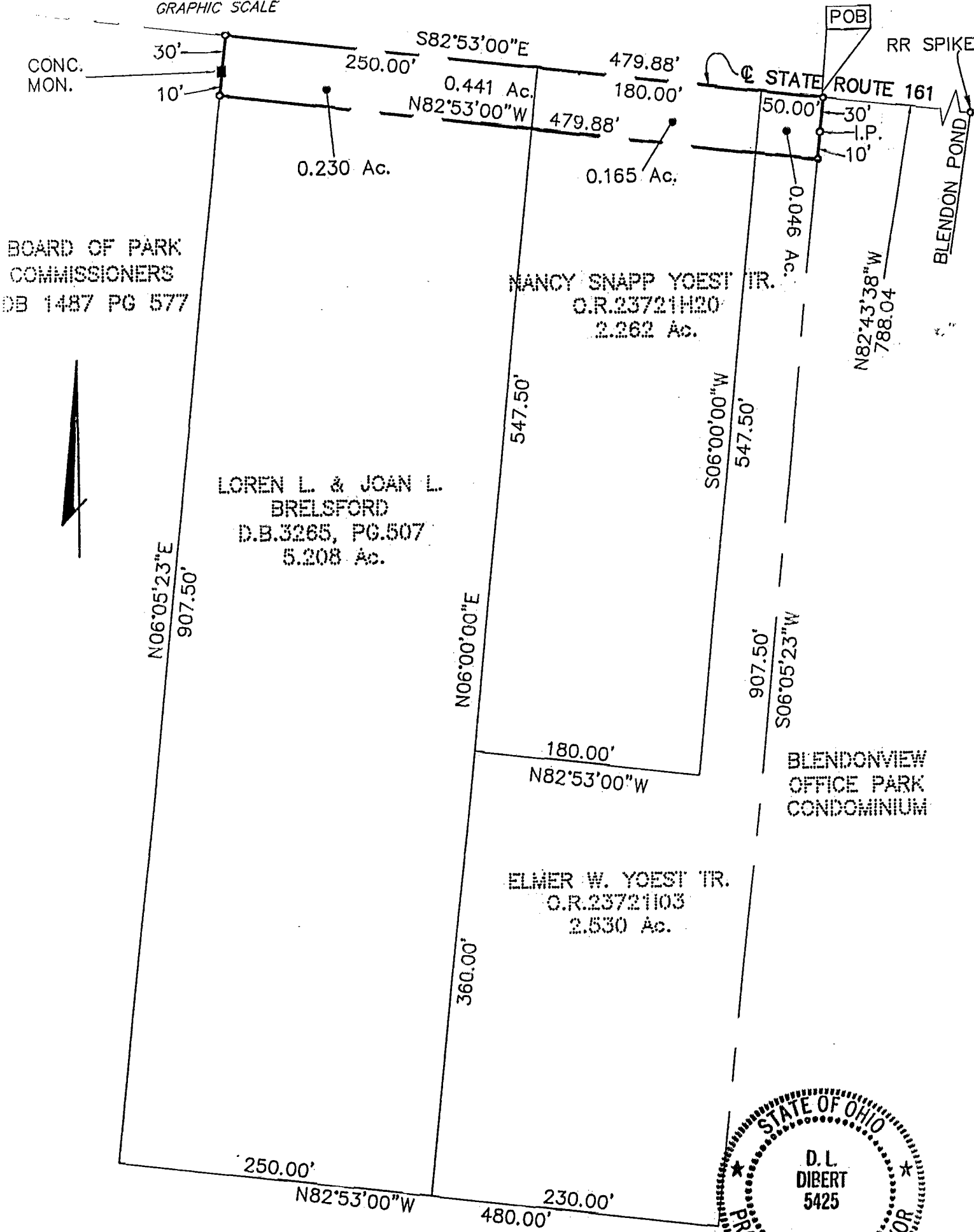


SURVEY OF 0.441 ACRE
 LOCATED IN
SECTION 4, TOWNSHIP 2, RANGE 17
UNITED STATES MILITARY LANDS
 CITY OF COLUMBUS, FRANKLIN COUNTY, STATE OF OHIO

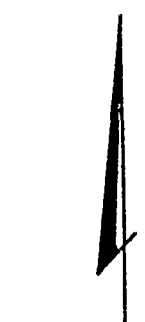
SCALE: 1" = 100'

MARCH 6, 1998

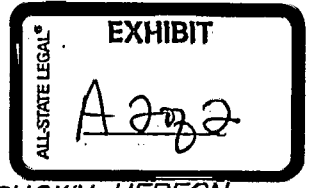
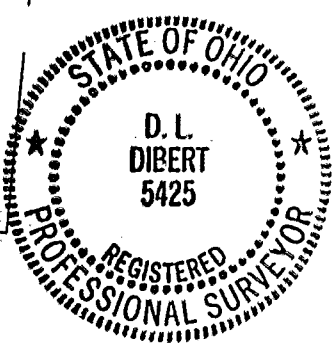
Record References: _____



BOARD OF PARK COMMISSIONERS
 DB 1487 PG 577



BOARD OF PARK COMMISSIONERS



E.M.H.&T. INC.

BASIS OF BEARINGS: THE BEARINGS SHOWN HEREON ARE BASED ON THE SAME MERIDIAN IN WHICH THE CENTERLINE OF STATE ROUTE 161 HAS A BEARING OF S 82°53'00" E AS SHOWN OF RECORD IN DEED BOOK 3265 PAGE 507 RECORDER'S OFFICE FRANKLIN COUNTY, OHIO.

By Donald L. Dibert
 Registered Surveyor No. 5425

86 107 575
 86 107 550