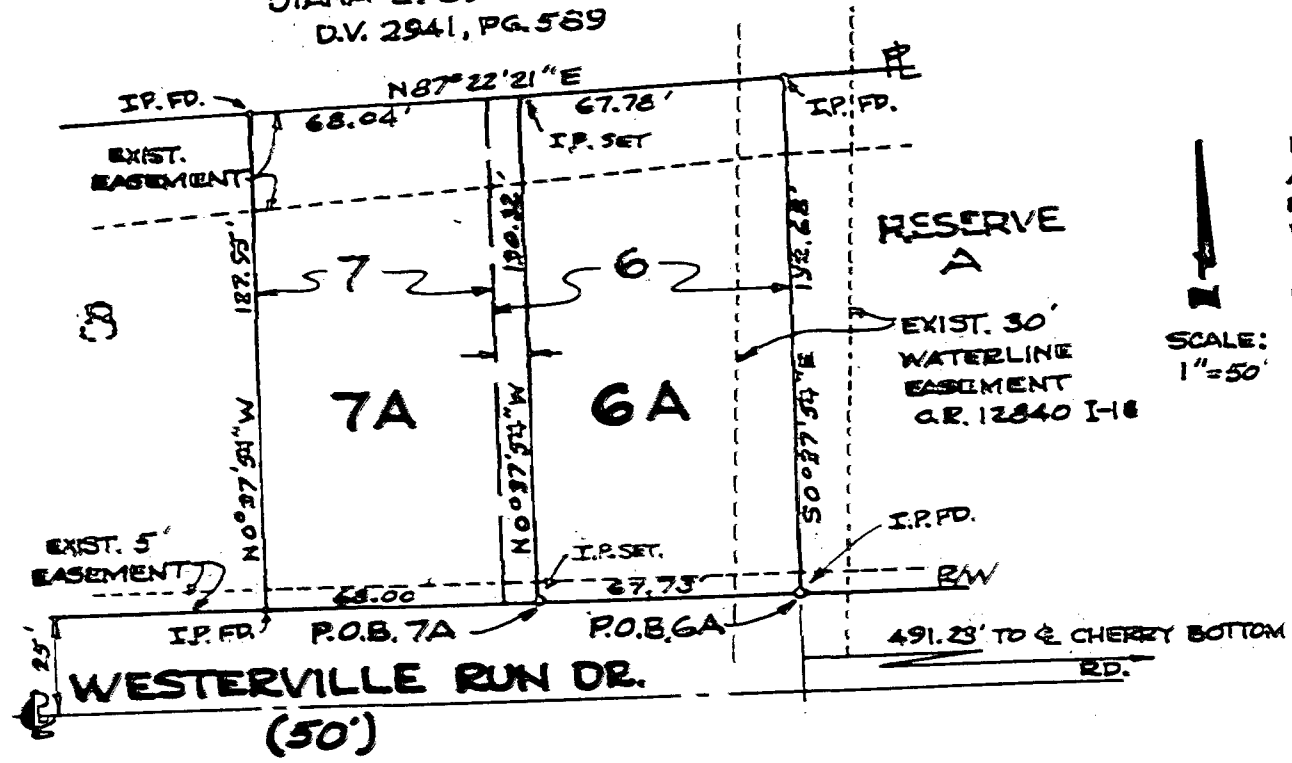



M-192-AAA  
185857525

DIANA E. COBAUGH  
D.V. 2941, PG. 589



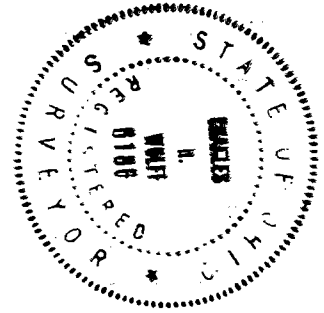
  
 BASIS OF BEARINGS  
 ARE THE BEARINGS  
 EMPLOYED FOR  
 WESTERVILLE RUN,  
 P.B. 80, PG. 83,  
 RECORDER'S OFFICE,  
 FRANKLIN COUNTY,  
 OHIO.  
 SCALE:  
 1"=50'

LOT SPLIT

WESTERVILLE RUN  
P.B. 80, PG. 83

EXHIBIT "A"

BEING LOTS 6 & 7 OF WESTERVILLE RUN  
AND BEING A SPLIT OF LOT 6 ADDED TO  
LOT 7 TO FORM LOTS 6A & 7A.



BY: Charles R. Wolfe 7-23-95  
REGISTERED SURVEYOR NO. 6188 DATE