

HOCKADON-LIFE ROUSCUP, INC.

CONSULTING ENGINEERS

883 N. CASSADY AVENUE

COLUMBUS, OHIO

PLAT OF A 54.038 ACRE TRACT WEST OF SUNBURY ROAD NORTH OF MORSE ROAD COLUMBUS, OHIO

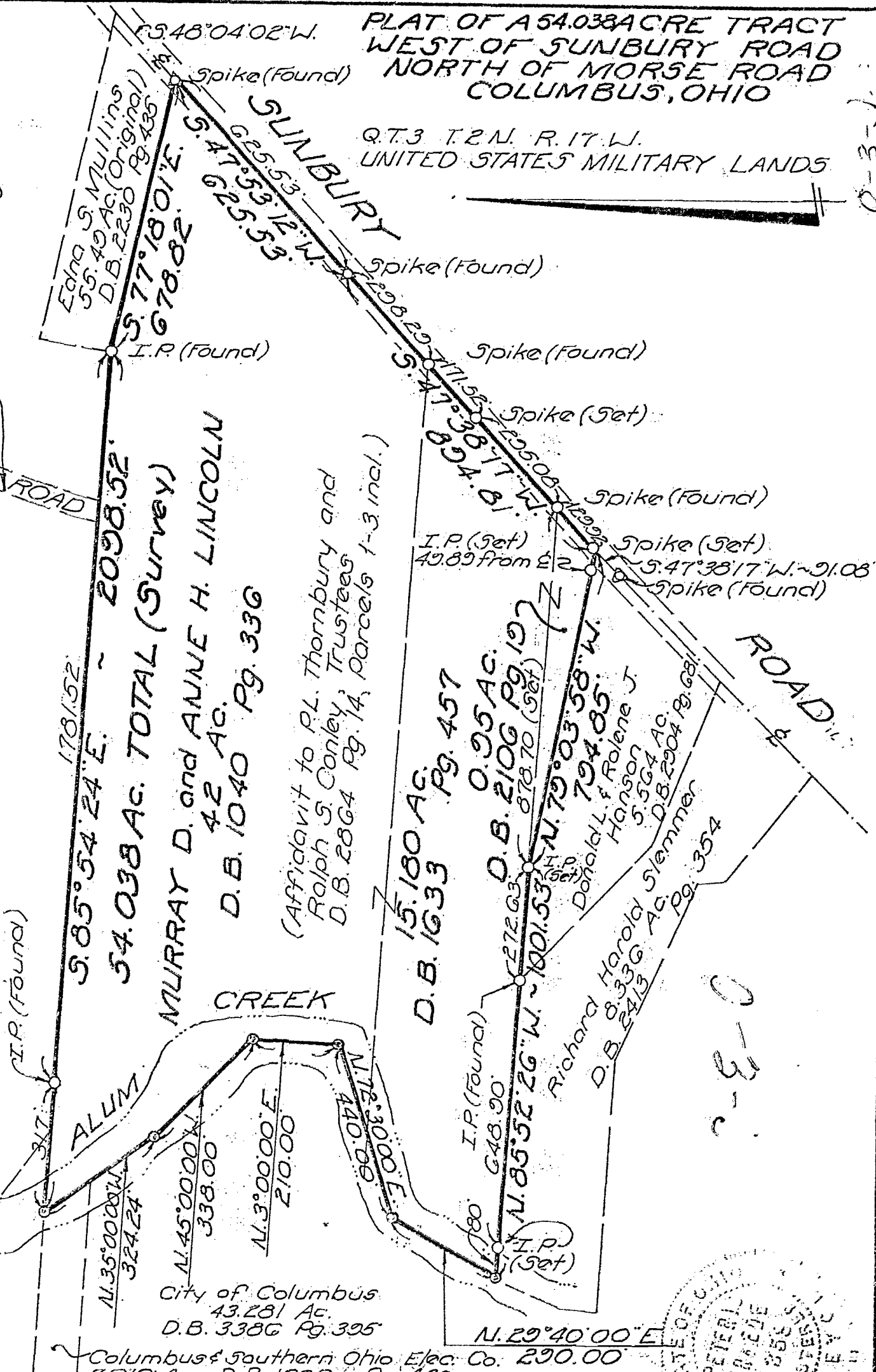
Q.T.3 T.2N. R.17.W. UNITED STATES MILITARY LANDS

4410 120 093 040 W SUNBURY M MORSE RD 0974 0039 030

SUNBURY HEIGHTS P.L.D. DISTRICT NO. 1 D.B. 46 Pg. 77 & 78

COLUMBIA PROPERTIES, INC. 52.459 AC. (Original) D.B. 3256 Pg. 25

85167525 85167500



MURRAY D. and ANNE H. LINCOLN 4.2 AC. D.B. 1040 Pg. 336

(Affidavit to P.L. Thornbury and Ralph S. Conley, Trustees D.B. 2864 Pg. 14, Parcels 1-3 incl.)

15.180 AC. D.B. 1633 Pg. 457

0.955 AC. D.B. 2106 Pg. 197

Richard Harold Stlemmer 8.336 AC. D.B. 2413 Pg. 354

Donald L. & Rolene J. Hanson 5.564 AC. D.B. 2904 Pg. 681

City of Columbus 43.281 AC. D.B. 3386 Pg. 395

Columbus & Southern Ohio Elec. Co. 7.610 AC. D.B. 1695 Pg. 439

We hereby certify that the foregoing plat was prepared from an actual survey of the premises.

SCALE 1" = 300'

DATE: 5-1-74 P-502

Table with columns: SURVY, DRAWN, CHECKED. Values: P.P., M.E.A., M.T.J.

Table with columns: REVD DATES, ORDER NUMBERS.

By: [Signature] HOCKADON-LIFE ROUSCUP, INC. Registered Surveyor #4358

