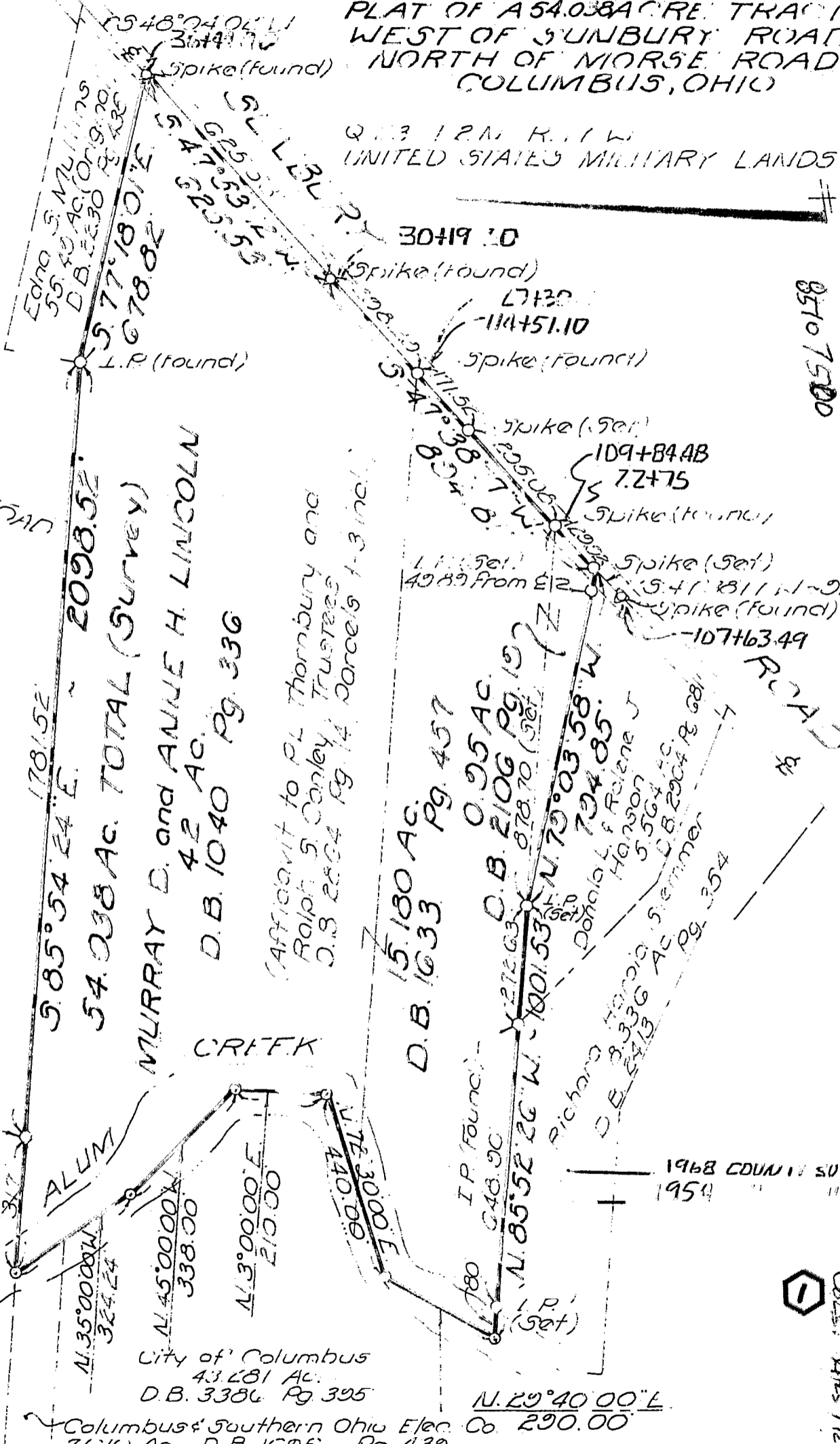


0-3-0

PLAT OF A 54.038 ACRE TRACT WEST OF SUNBURY ROAD NORTH OF MORSE ROAD COLUMBUS, OHIO

Q. B. 12 N. H. 1 W. UNITED STATES MILITARY LANDS

Cols - WESTERVILLE
SUNBURY TRACTS
PL 2 DIS. FIC. AL.
D.B. 46 PG. 774 78



85107525
85107500

COLUMBIA PROPERTIES, INC.
D.B. 3250 PG. 25

SEE 2

I.P. FOUND

5.85° 54' 24" E. 1781.52
54.038 AC. TOTAL (SURVEY)
MURRAY D. and ANNE H. LINCOLN
42 AC.
D.B. 1040 PG. 336

(Affidavit to PL Thornbury and
Ralph S. Conley, Trustees
D.B. 2804 PG. 14 Parcels 1-3 incl.)

5.180 AC. PG. 457
D.B. 1633
0.95 AC.
D.B. 2106 PG. 157
0.7870 (Set)
N. 70° 03' 58" W.
794.85'
Richard Hanson
D.E. 2936 AC. Stemmer
PG. 354
1968 COUNTY SURVEY
1954

City of Columbus
43,281 Ac.
D.B. 3386 PG. 395

Columbus Southern Ohio Elec. Co. 290.00
7.610 Ac D.B. 1695 PG. 439

We hereby certify that the foregoing plat was prepared from an actual survey of the premises.

SCALE 300'

DATE 5-1-74

P-502

HICKADAY LINES CONSULTING, INC.

BY MEA/MIN

By

Registered Surveyor #4350

0-3-0
Cols. WESTERVILLE