

# BAUER, DAVIDSON & MERCHANT, INC.

CONSULTING ENGINEERS

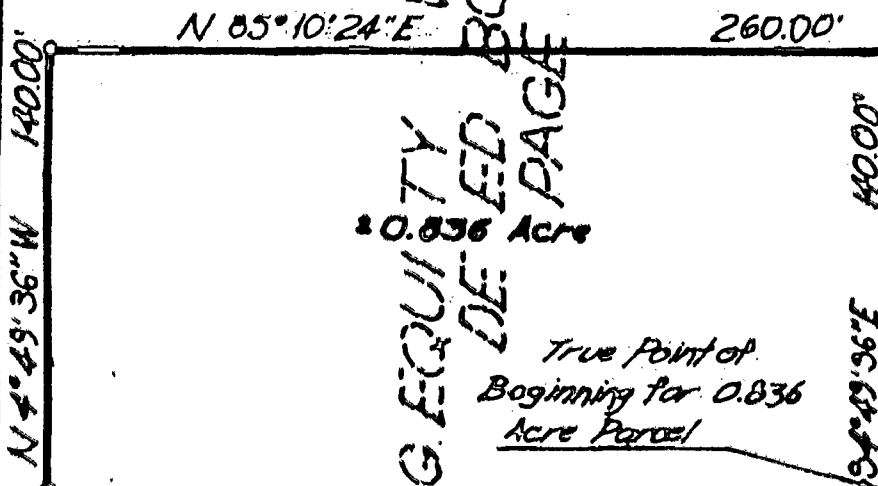
255 GREEN MEADOWS DRIVE SOUTH SUITE B P.O. BOX 152 POWELL, OHIO 43065

MAP SHOWING ACREAGE PARCELS OF LAND  
 LOCATED WEST OF TURTLE STATION AND NORTH  
 BLUEJACKET ROAD, IN THE CITY OF COLUMBUS,  
 FRANKLIN COUNTY, OHIO.

COLS. WESTERN CO.

G-4-B

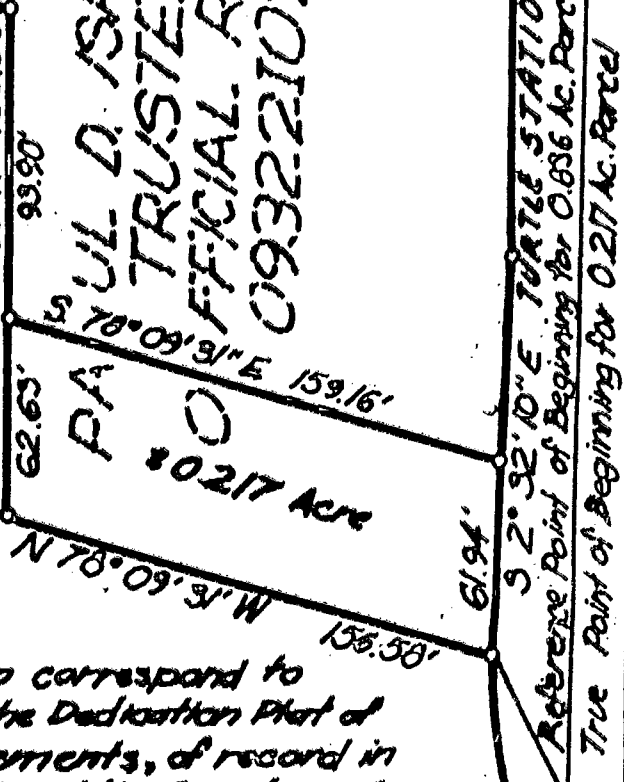
G. EQUITY VENTURES, INC.  
 DEEDED BOOK 3271  
 PAGE 625



True Point of Beginning for 0.836 Acre Parcel

S 85° 10' 24" W 260.00'  
 \*The 0.217 acre parcel and the 0.836 acre parcel of land are situated in the State of Ohio, County of Franklin, City of Columbus, being in Section 4, Township 2, Range 17, United States Military Lands, said 0.217 acre parcel being out of that 25.530 acre tract of land conveyed to Paul D. Isaacs, Trustee by deed of record in Official Record: 09322102, said 0.836 acre parcel being out of that tract of land conveyed to G. Equity Ventures, Inc. by deed of record in D.B. 3271, P. 625, both being of record in the Recorder's Office, Franklin County, Ohio.

PAUL D. ISAACS,  
 TRUSTEE  
 OFFICIAL RECORD  
 09322102



R/W BLUEJACKET ROAD  
 DEDICATION PLAT OF BLUEJACKET ROAD  
 TURTLE STATION AND EASEMENTS  
 PLAT BOOK 66, PAGE 95

The bearings shown on the foregoing map correspond to the bearings shown on recorded plat of the Dedication Plat of Bluejacket Road, Turtle Station and Easements, of record in Plat Book 66, Page 95, Recorder Office, Franklin County, Ohio.

We hereby certify that the foregoing map was prepared from information obtained from a field survey conducted by Bauer, Davidson & Merchant, Inc. in October of 1987.

BAUER, DAVIDSON & MERCHANT, INC.  
 Consulting Engineers

By John W. McCombs  
 John W. McCombs  
 Professional Surveyor No. 6661



Scale: 1" = 60'  
 Oct. 8, 1987  
 3600-87

3606-87