

M-194-B

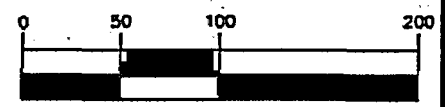
EXHIBIT "A"

LEE SUBDIVISION PB. 77 PG. 12

PARCEL NO. 9-WL 85357550
 OWNER: CHESTER LEE
 REFERENCE: DEED BOOK 14717 PAGE B-09
 LOT 2 AREA: 0.034 AC.
 LOT 3 AREA: 0.256 AC.
 LOT 4 AREA: 0.142 AC.
 LOT 5 AREA: 0.144 AC.
 LOT 6 AREA: 0.151 AC.
 TOTAL AREA: 0.727 AC.

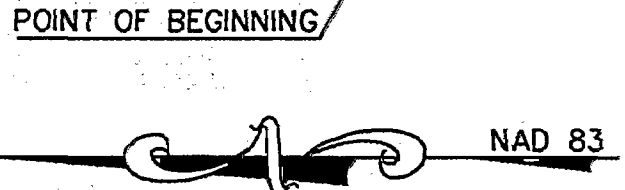
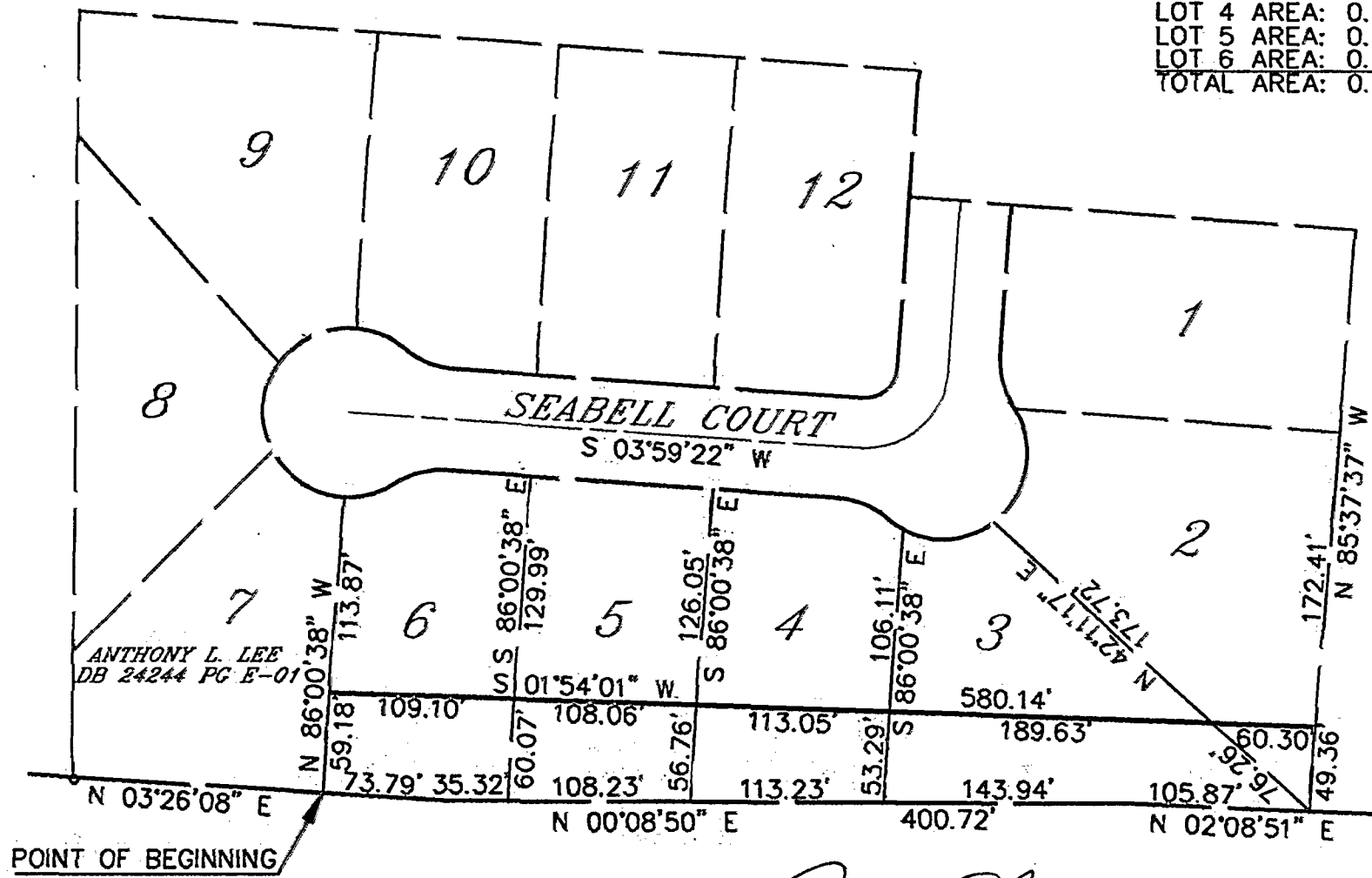


GRAPHIC SCALE



(IN FEET)
 1 inch = 100 ft.

162
 MICKEY A. NASH
 TAMI NASH
 DB 17613 PG 1-16



BY: Richard John Swan 9/2/94
 RICHARD JOHN SWAN, REG. PROFESSIONAL SURVEYOR NO. 6574

SURVEYED BY
ms consultants, inc.
 ENGINEERS, ARCHITECTS, PLANNERS



"NORTH" IS BASED ON A GPS SURVEY PERFORMED BY THE FRANKLIN COUNTY ENGINEERS OFFICE ON MONUMENTS FCGS 4420 AND FCGS 9959, AND IS BASED ON THE NAD83 STATE PLANE CO-ORDINATE SYSTEM, OHIO SOUTH ZONE.

C/L I-270

M-194-B