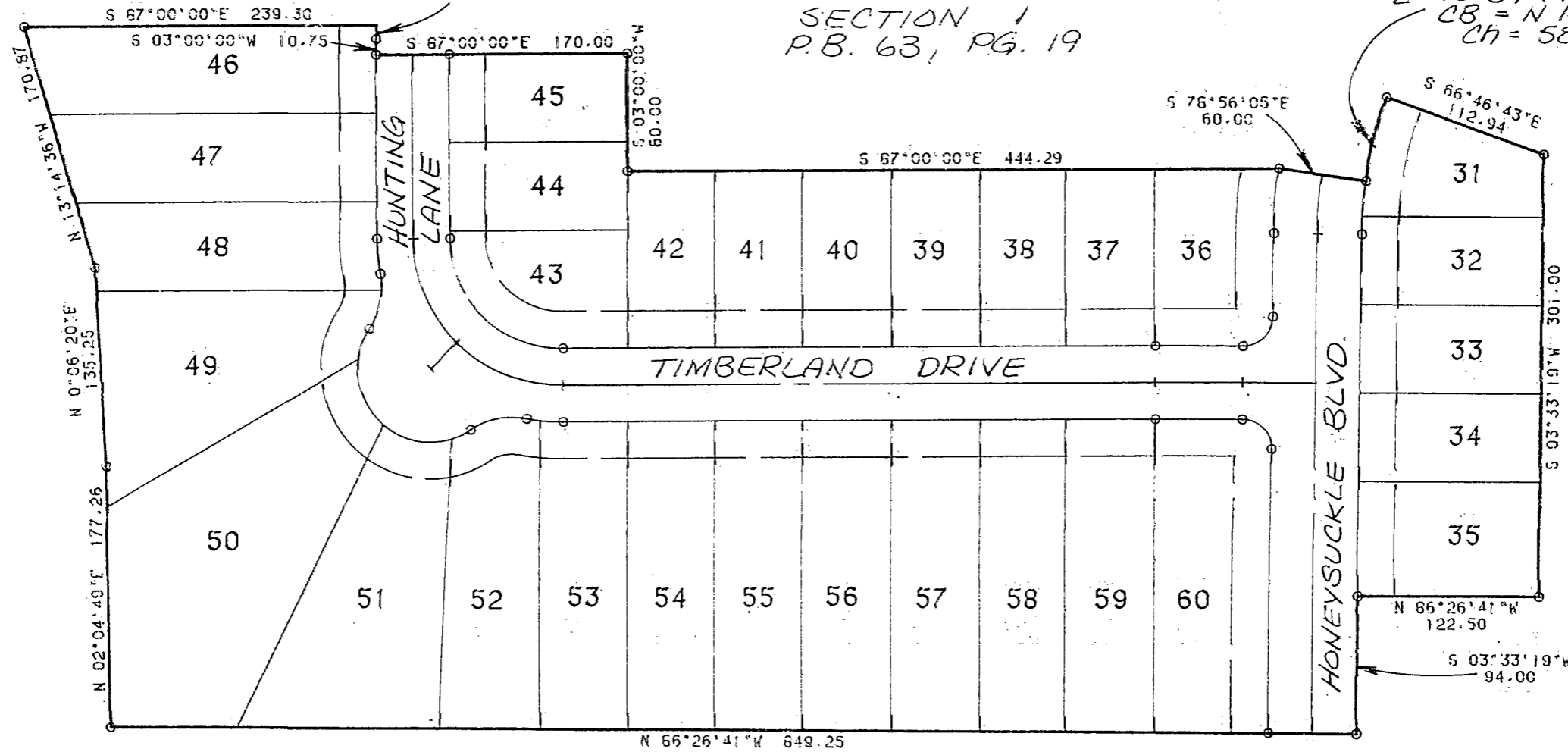


VALLEY - WESTERVILLE

BE107550
 $\Delta = 3^{\circ}36'07''$ R = 150.00'
CB = S 4° 48' 03" W Ch = 9.43' THE RAVINES AT STRAWBERRY FARMS
SECTION 1
P.B. 63, PG. 19

$\Delta = 12^{\circ}09'19''$ R = 276.81'
CB = N 17° 08' 34" E
Ch = 58.61'

O-3-F



O-3-F

WILBUR R. FRANKLIN SR. &
MARION FRANKLIN
D.B. 1651, PG. 117



O-3-F

CONCEPT COMMUNITIES

EXHIBIT OF

THE RAVINES AT STRAWBERRY FARMS
SECTION 2

PREPARED BY:
R.D. ZANDE & ASSOCIATES, LTD.

EXHIBIT B